

AGENDA

HIGHWAY, INFRASTRUCTURE & RECREATION COMMITTEE

DATE: Thursday, February 5, 2026
TIME: 9:00 AM
PLACE: Highway Office – Conference Room

Join by phone

+1-408-418-9388 United States Toll
Access code: 2483 415 0761

Join by WebEx App or website

<https://woodcountyiwi.webex.com/woodcountyiwi/j.php?MTID=m72d3652ee835bf19af3a291b17c35bb2>

Webinar number: 2483 415 0761
Webinar password: 020526

1. Call meeting to order
2. Declaration of quorum
3. Public comments
4. Correspondence
5. Approve minutes from previous committee meeting
6. **HIGHWAY**
 - a. Highway staff reports
 - b. Highway revenue report
 - c. Highway vouchers
 - d. Resolution – Requesting Governor & Legislature to develop a long term funding mechanism ensuring sustainable transportation funding
 - e. Resolution – Amend Highway Speed Limit Ordinance #400
 - f. Administration Fee update & action
 - g. CTH P Set-back for Town of Milladore Town Hall
 - h. Parks bridge bids
 - i. CTH F CIR bids
 - j. Culvert quotes
 - k. PPE Allowance Policy
7. **PARKS AND FORESTRY**
 - a. Parks & Forestry staff reports
 - b. Aqua Skiers proposed Red Sands Beach improvements
 - c. Resolutions for exceeding 2025 budgeted expenses
 - d. Resolutions for ATV & Snowmobile Maintenance Grants
 - e. Special Use permits
 - f. Parks and Forestry revenue reports
 - g. Parks & Forestry vouchers
8. Attendance at Meetings
9. Future Agenda Items
10. Set next regular meeting date: Thursday, March 5, 2026, 9:00 AM
11. Adjournment

MINUTES

HIGHWAY, INFRASTRUCTURE & RECREATION COMMITTEE

DATE: Thursday, January 8, 2026
TIME: 9:00 AM
PLACE: Highway Dept., Conference Room

MEMBERS PRESENT: Jake Hahn, Al Breu (WebEx), Scott Brehm, Lee Thao, John Hokamp

OTHERS PRESENT: Trent Miner, County Clerk, see attached sign-in sheet

1. Chairman Hahn called the meeting to order at 9:00 AM and declared a quorum present.
2. There was no public comment.
3. The minutes of the December 4, 2025, meeting were presented. Motion by Thao/Breu to accept the minutes as presented. Motion carried unanimously.
4. The Highway Dept. staff reports were highlighted and reviewed.
5. The Highway revenue report was reviewed.
6. Motion by Hokamp/Thao to approve the Highway Dept. vouchers. Motion carried unanimously.
7. Highway Commissioner Hawk highlighted the active winter weather season so far as it relates to the budget.
8. Hawk presented two resolutions for out of state travel. One request is to attend the National Association of County Engineers in Arlington, TX. The other is to attend the Transportation Development Association Fly-In in Washington, DC. Motion by Hokamp/Breu to approve the two resolutions and forward onto the county board for their consideration. Motion carried unanimously.
9. Accounting Supervisor Peckham reviewed the history of the administrative fee being applied to invoices and the deficit that it had eliminated. At the time of inception, it was voted to let the Highway Committee (or its successor) decide what to do once the deficit was eliminated. Motion by Hokamp/Thao to continue the administrative fee, and to include it on road and bridge aid invoices, and to review again after a year. Motion carried unanimously.
10. The Parks & Forestry staff reports were reviewed.
11. Parks & Forestry Director Schooley presented 2 special use permits for approval:
 - a. Ice Races at Dexter County Park
 - b. Aqua Skiers practice and tournament schedule for beach closures at South ParkMotion by Thao/Hokamp to approve the special use permits as presented. Motion carried unanimously.

12. Parks & Forestry Director Schooley presented the 2026 Work Plan resolution for the Wood County Forest. This enables application for grant funding. Motion by Thao/Hokamp to approve the resolution and forward onto the county board for their consideration. Motion carried unanimously.
13. The Wood County Wildlife Advisory Committee have reviewed their current rules of order and have determined that they should be amended to better reflect the needs of the committee. This is done via resolution, which was presented. Motion by Brehm/Breu to approve the resolution and forward onto the county board for their consideration. Motion carried unanimously.
14. The Parks & Forestry revenue reports were reviewed.
15. Motion by Thao/Hokamp to approve Parks & Forestry vouchers. Motion approved unanimously.
16. The next meeting will be held on Thursday, February 5th, at 9:00 AM at the Highway Department Conference Room.
17. Chairman Hahn declared the meeting adjourned at 9:24 AM.

Minutes taken by Trent Miner, County Clerk, and Rachel Krause, Highway Program Assistant, and are in draft form until approved at the next meeting.

January 8, 2026

4



Wood County

WISCONSIN

OFFICE OF
HIGHWAY COMMISSION

Roland Hawk
COMMISSIONER

January 28, 2026

To: Highway, Infrastructure & Recreation Committee

From: Roland Hawk, PE Highway Commissioner

Subject: Commissioner Report for February 5, 2026, HIRC meeting

Department Activities

Personnel/Administration

Highway staff conducted interviews for the mechanic vacancy on January 26. Commissioner is reviewing references and anticipates a candidate to start in mid-February.

The Wisconsin County Association is asking counties to pass a Sustainable Transportation Funding Resolution that urges lawmakers and future Governors to find a solution to sustainable transportation funding.

Highway staff conducted a field survey of CTH BB north of CTH B intersection in the Town of Lincoln and determined the traffic volumes and type of traffic (significant higher truck traffic) has increased. The stopping site distance for vehicles approaching Yellow River Road was at the minimum distance for 55 MPH. Moving the reduced speed limit 0.14 miles north of the intersection improves safety for those slow-moving agricultural vehicles entering the highway from Yellow River Road and adjacent fields.

Crew members have requested hands free devices be added to PPE list. If HIRC finds acceptable, items would be eligible for PPE Safety Allowance reimbursement.

Town of Milladore contacted Commissioner to inquire about a possible Highway Set-back waiver for town hall addition. The town does not have zoning ordinances related to highway set-back, therefore county ordinance regulates the set-back distance.

Highway/Facility Projects

- WisDOT STP Project CTH F & HH Intersection **Construction 2026**
 - Bid Opening was November 11, 2025, Mashuda Contractors, Inc, is low bid at \$1,303,522.47
- WisDOT STP Bridge CTH N (STH 186 – CTH N) **Construction 2025**
 - Work is in progress. Deck poured in late December under close supervision. Remaining work to proceed as weather dictates
- WisDOT STP Urban (BIL) CTH U Village of Biron **Construction 2026**
 - Final R/W parcel purchased 9/24/25. Need to Raise the structure during winter 2025-26.
 - Commissioner working with Village, Tn of Grand Rapids, & Tn of Plover on Jurisdictional Transfer
- CTH AA Lynn Creek
 - Preliminary Road & Structure Plans 98% complete.

- Preliminary Estimate \$1.9 million
- R/W acquisition scheduled for 2026.
- Commissioner reassigned \$139,651 LRIP funds to the Lynn Creek Bridge replacement.
- Highway will assign 2026-2027 CHI (50/50) funds to this project to be constructed in 2026. HIRC approved moving CTH HH (CTH F – STH 186) to 2027 construction to make funds available for CTH AA in 2026.

Highway Maintenance

Work in December included:

- Sign replacements
- Tree & brush removal
- Mastic and asphalt patching
- Snow & ice removal
- Bridge repairs & maintenance

WCHA Events & Misc. Meetings since the last HIRC meeting

Commissioner attended the following events/meetings:

- January 1, Holiday
- January 2, Holiday,
- January 5, Meet with State Patrol, HR, Risk Management
- January 6, CTH N Bridge weekly progress meeting, virtual
- January 7, Town of Cranmore Board Meeting
- January 8, HIRC Meeting, Highway Shop
- January 8, WCHA By-Law Revision Sub-Committee meeting, Virtual
- January 8, Grand Rapids Public Works meeting,
- January 12, Safety Work Group meeting,
- January 13, WCHA Executive meeting, La Crosse
- January 13 – 15, WCHA Winter Road School, La Crosse
- January 19, Machinery Management Work Group meeting, Wisconsin Rapids
- January 20, County Board Meeting, Court House,
- January 20, Delasoft Check In meeting, Virtual
- January 22, CTH AA progress meeting, Virtual
- January 22, CTH U Village of Biron, Utility Construction meeting, Virtual
- January 23, WDNR Air Quality Certification submittals
- January 26, Mechanic II interviews
- January 29, WCHA TRANS 206 Sub-Committee, Virtual

EQUIPMENT

Commissioner is working with WisDOT to secure 60% of cost to construct a salt shed for proposed Dexterville Highway facility to be constructed in 2027.

The new high-capacity brine maker was installed at the Marshfield facility December 15, 2025. WisDOT provided 100% of the funding to purchase the brine maker and equipment.

Commissioner & shop supervisor working with truck dealership to finance one of two 2026 patrol trucks as directed by HIRC. Vendor working on purchasing/financing options.

Accounting Supervisor Report

By John Peckham, Wood County Highway Department Accounting Supervisor

HIRC Meeting

Revenues and Expenses

We have received the first General Transportation Aids payment of \$731,802.23. We will receive two more payments this year; one in July for \$1,463,604.46 and one in October for \$731,802.23. Those monies are the main source of funding for the Maintenance Fund.

We are chiefly engaged in Snow Removal and Shop Operations at this time of year.

Other

As of February 1, I will begin the procedures to close the Highway Department books for 2025. At the time of the HIRC meeting, all year-end inventory procedures in the stockroom and at our stockpiles will have been completed.

County of Wood
 DETAILED INCOME STATEMENT W/SUBTOTALS
 Highway Departmentwide
 Saturday, January 31, 2026

	Actual	2026 Budget	Variance	Variance %
REVENUES				
Intergovernmental Revenues				
43531 State Aid-Transportation	\$731,802.23	\$2,927,208.95	(\$2,195,406.72)	(75.00%)
Total Intergovernmental	731,802.23	2,927,208.95	(2,195,406.72)	(75.00%)
Licenses and Permits				
44101 Utility Permits	6,190.00	30,550.00	(24,360.00)	(79.74%)
Total Licenses and Permits	6,190.00	30,550.00	(24,360.00)	(79.74%)
Intergovernmental Charges for Services				
47230 State Charges		1,442,179.00	(1,442,179.00)	(100.00%)
47231 State Charges-Highway	29,896.33	263,817.00	(233,920.67)	(88.67%)
47232 State Charges-Machinery		(14,629.00)	14,629.00	(100.00%)
47300 Local Gov Chgs		847,362.00	(847,362.00)	(100.00%)
47330 Local Gov Chgs-Transp	2.22	1,961,954.00	(1,961,951.78)	(100.00%)
47332 Local Gov Chgs-Roads		265,997.00	(265,997.00)	(100.00%)
47333 Local Gov Chgs-Bridges		117,349.00	(117,349.00)	(100.00%)
Total Charges to Other Governments	29,898.55	4,884,029.00	(4,854,130.45)	(99.39%)
Interdepartmental Charges for Services				
47470 Dept Charges-Highway		2,862,576.00	(2,862,576.00)	(100.00%)
Total Interdepartmental Charges		2,862,576.00	(2,862,576.00)	(100.00%)
Total Intergovernmental Charges for Services	29,898.55	7,746,605.00	(7,716,706.45)	(99.61%)
Miscellaneous				
48340 Gain/Loss-Sale of Salvage and Waste	412.80	10,605.00	(10,192.20)	(96.11%)
Total Miscellaneous	412.80	10,605.00	(10,192.20)	(96.11%)
Other Financing Sources				
49110 Proceeds from Long-Term Debt		4,261,700.00	(4,261,700.00)	(100.00%)
Total Other Financing Sources		4,261,700.00	(4,261,700.00)	(100.00%)
TOTAL REVENUES	768,303.58	14,976,668.95	(14,208,365.37)	(94.87%)
EXPENDITURES				
Public Works-Highway				
53110 Hwy-Administration	22,344.10	427,565.04	405,220.94	94.77%
53120 Hwy-Engineer	8,831.54	272,041.52	263,209.98	96.75%
53191 Hwy-Other Administration	24,657.88	400,326.78	375,668.90	93.84%
53210 Hwy-Employee Taxes & Benefits	(863,514.30)		863,514.30	0.00%
53220 Hwy-Field Tools	1,043.03	(45,386.55)	(46,429.58)	102.30%
53230 Hwy-Shop Operations	12,751.81	325,400.34	312,648.53	96.08%
53232 Hwy-Fuel Handling	2,161.90	(17,415.00)	(19,576.90)	112.41%
53240 Hwy-Machinery Operations	(217,499.17)	(344,515.87)	(127,016.70)	36.87%
53250 Hwy-Crushing Operations		35,624.03	35,624.03	100.00%
53251 Hwy-Crushing Operations Production		127,671.91	127,671.91	100.00%
53260 Hwy-Bituminous Ops	2,326.38	215,368.25	213,041.87	98.92%
53266 Hwy-Bituminous Ops		2,032,292.73	2,032,292.73	100.00%
53270 Hwy-Buildings & Grounds	15,797.43	258,245.36	242,447.93	93.88%
53290 Hwy-Salt Brine Operations	2,570.86	(0.45)	(2,571.31)	571,402.22%
53291 Hwy-Salt Brine Operations	8,274.29	1,170.55	(7,103.74)	(606.87%)
53310 Hwy-Maintenance CTHS		62,998.99	62,998.99	100.00%
53311 Hwy-Maint CTHS Patrol Sectn	60,787.73	2,676,572.21	2,615,784.48	97.73%
53312 Hwy-Snow Remov	159,345.23	992,793.92	833,448.69	83.95%
53313 Hwy-Maintenance Gang	4,542.68	272,777.37	268,234.69	98.33%
53314 Hwy-Maint Gang-Materials	1,890.00	8,302.00	6,412.00	77.23%
53320 Hwy-Maint STHS	163,614.75	1,442,179.24	1,278,564.49	88.66%
53330 Hwy-Local Roads	20,800.50	1,961,954.25	1,941,153.75	98.94%
53340 Hwy-County-Aid Road Construction		326,618.11	326,618.11	100.00%
53341 Hwy-County-Aid Bridge Construction	2,491.06	249,955.50	247,464.44	99.00%
53490 Hwy-State & Local Other Services	2,805.82	847,361.79	844,555.97	99.67%
53491 Hwy-ATV Route Signage		17,080.61	17,080.61	100.00%
Total Public Works-Highway	(563,976.48)	12,546,982.63	13,110,959.11	104.49%
Capital Outlay				
57310 Highway Capital Projects	22,887.70	4,233,864.78	4,210,977.08	99.46%
Total Capital Outlay	22,887.70	4,233,864.78	4,210,977.08	99.46%
TOTAL EXPENDITURES	(541,088.78)	16,780,847.41	17,321,936.19	103.22%

County of Wood
DETAILED INCOME STATEMENT W/SUBTOTALS
Highway Departmentwide
Saturday, January 31, 2026

	Actual	2026 Budget	Variance	Variance %
NET INCOME (LOSS) *	1,309,392.36	(1,804,178.46)	3,113,570.82	(172.58%)

Committee Report

County of Wood

Report of claims for: HIGHWAY

For the period of: DECEMBER

For the range of vouchers: 16252894 - 16253174

Voucher	Vendor Name	Nature of Claim	Doc Date	Amount	Paid
16252894	AMAZON CAPITAL SERVICES	OFFICE SUPPLIES	12/15/2025	\$24.98	P
16252895	AMAZON CAPITAL SERVICES	ENGINEER SUPPLIES	12/10/2025	\$209.40	P
16252896	AMAZON CAPITAL SERVICES	PARTS	12/11/2025	\$35.62	P
16252897	AECOM TECHNICAL SERVICES INC	CTH V BRIDGE	12/11/2025	\$11,736.00	P
16252898	BECKER TRUCKING & EXCAVATING INC	AGGREGATE MATERIALS	12/08/2025	\$5,721.54	P
16252899	CINTAS CORPORATION	CLEANING RUGS & UNIFORMS	11/03/2025	\$529.73	P
16252900	CINTAS CORPORATION	CLEANING RUGS & UNIFORMS	11/10/2025	\$529.73	P
16252901	CINTAS CORPORATION	CLEANING RUGS & UNIFORMS	11/17/2025	\$529.73	P
16252902	CINTAS CORPORATION	CLEANING RUGS & UNIFORMS	11/24/2025	\$529.73	P
16252903	CINTAS CORPORATION	CLEANING RUGS & UNIFORMS	11/05/2025	\$1,411.76	P
16252904	CINTAS CORPORATION	CLEANING RUGS & UNIFORMS	11/12/2025	\$1,194.31	P
16252905	CINTAS CORPORATION	CLEANING RUGS & UNIFORMS	11/19/2025	\$1,194.31	P
16252906	CINTAS CORPORATION	CLEANING RUGS & UNIFORMS	11/26/2025	\$1,232.37	P
16252907	CINTAS CORPORATION	CLEANING RUGS & UNIFORMS	11/12/2025	\$49.92	P
16252908	CINTAS CORPORATION	CLEANING RUGS & UNIFORMS	11/26/2025	\$49.92	P
16252909	DVORAN WOODWORKS LLC	3139 PATROL TRUCK	12/11/2025	\$80.00	P
16252910	KOLO TRUCKING AND EXCAVATING INC	SAND FOR SALT/SAND	12/11/2025	\$11,122.27	P
16252911	MEAD & HUNT	WI NE CTH AA PROF SVCS	09/15/2025	\$36,216.85	P
16252912	MEAD & HUNT	WI NE CTH AA PROF SVCS	10/14/2025	\$10,838.17	P
16252913	MEAD & HUNT	WI NE CTH AA PROF SVCS	11/12/2025	\$4,686.56	P
16252914	M&M MID VALLEY SERVICE AND SUPPLY	MFLD FUEL SYSTEM	12/10/2025	\$147,419.64	P
16252915	UNIFIRST CORPORATION	SAFETY GEAR	11/17/2025	\$76.45	P
16252916	VILLAGE OF BIRON	CTH U REAL ESTATE TAXES	12/15/2025	\$1,679.21	P
16252917	WATER WORKS & LIGHTING COMM	UTILITIES - HOT MIX	12/10/2025	\$286.33	P
16252918	WE ENERGIES	NATURAL GAS - HOT MIX	12/11/2025	\$1,569.76	P
16252919	WE ENERGIES	NATURAL GAS - WR SHOP	12/05/2025	\$102.67	P
16252920	WE ENERGIES	NATURAL GAS - WR SHOP	12/05/2025	\$2,966.72	P
16252921	US BANK	PROCUREMENT CARD PURCHASES	12/17/2025	\$663.29	P
16252922	CNE GAS	NATURAL GAS - HOT MIX	12/15/2025	\$507.70	P
16252923	AMAZON CAPITAL SERVICES	PARTS	11/20/2025	\$286.80	P
16252924	AMAZON CAPITAL SERVICES	PARTS	12/16/2025	\$40.34	P
16252925	AMAZON CAPITAL SERVICES	PARTS	12/18/2025	\$9.99	P
16252926	STAPLES ADVANTAGE	OFFICE SUPPLIES	12/18/2025	\$6.84	P
16252927	STAPLES ADVANTAGE	OFFICE SUPPLIES	12/17/2025	\$117.25	P

HIGHWAY - DECEMBER

16252894 - 16253174

Voucher	Vendor Name	Nature of Claim	Doc Date	Amount	Paid
16252928	ADAMS COUNTY HIGHWAY DEPT	PAINTING	11/30/2025	\$2,445.21	P
16252929	AT&T-ATLANTA	TELEPHONE - MFLD	12/21/2025	\$50.97	P
16252930	ADVANCE JANITORIAL/CLEAN POWER (Use after 7/31/25)	CLEANING SERVICE AND SUPPLIES	12/29/2025	\$718.23	P
16252931	CITY OF WIS RAPIDS TREASURER	MILLINGS	12/26/2025	\$3,490.90	P
16252932	CITY OF WIS RAPIDS TREASURER	SHOP MATERIALS	12/26/2025	\$590.69	P
16252933	CONTECH CONSTRUCTION PROD	T/RICHFIELD CULVERT	12/12/2025	(Voided)	P
16252934	CROCKETT SEPTIC LLC	PORTABLE TOILET PUMPING FEE	12/25/2025	\$120.00	P
16252935	DOORWORKS INC	DOOR REPAIR	12/03/2025	\$235.50	P
16252936	MARSHFIELD UTILITIES	UTILITIES - MFLD	12/30/2025	\$170.52	P
16252937	MARSHFIELD UTILITIES	UTILITIES - MFLD	12/30/2025	\$689.17	P
16252938	MARSHFIELD UTILITIES	UTILITIES - MFLD	12/30/2025	\$56.00	P
16252939	CITY OF MARSHFIELD TREASURER	T/RICHFIELD ARPIN RD	12/18/2025	\$759.62	P
16252940	MAVO SYSTEMS WISCONSIN LLC	CTH U ASBESTOS ABATEMENT	12/23/2025	\$2,255.00	P
16252941	MENARDS-MARSHFIELD	PARTS	11/18/2025	\$116.46	P
16252942	PRECISE MRM LLC	FLAT PLAN GPRS NAF DECEMBER	12/29/2025	\$594.00	P
16252943	REI	MFLD FUEL SYSTEM	12/24/2025	\$1,861.00	P
16252944	STEVE SCHNEIDER TRUCKING LLC	AGGREGATES	12/19/2025	\$540.00	P
16252945	TRACTOR SUPPLY CREDIT PLAN	PARTS	12/30/2025	\$743.79	P
16252946	UNIFIRST CORPORATION	SAFETY GEAR	12/22/2025	\$66.19	P
16252947	UNIFIRST CORPORATION	SAFETY GEAR	12/18/2025	\$185.18	P
16252948	UNIFIRST CORPORATION	SAFETY GEAR	12/18/2025	\$178.61	P
16252949	UNIFIRST CORPORATION	SAFETY GEAR	12/26/2025	\$92.79	P
16252950	UNITED RENTALS NORTH AMERICA INC	T/RICHFIELD ARPIN/RICH CULVERT	12/19/2025	\$776.00	P
16252951	UNITED RENTALS NORTH AMERICA INC	T/RICHFIELD ARPIN/RICH CULVERT	12/19/2025	(\$149.00)	P
16252952	VARITECH INDUSTRIES INC	9079 BRINE MAKER	12/11/2025	\$113,502.44	P
16252953	VARITECH INDUSTRIES INC	9079 BRINE MAKER	12/12/2025	\$2,900.55	P
16252954	VARITECH INDUSTRIES INC	9079 BRINE MAKER	12/16/2025	\$37.69	P
16252955	WESTWOOD PROFESSIONAL SERVICES INC	CTH U EXTENSION	10/14/2025	\$5,195.94	P
16252956	WESTWOOD PROFESSIONAL SERVICES INC	CTH U EXTENSION	11/12/2025	\$16,406.52	P
16252957	WESTWOOD PROFESSIONAL SERVICES INC	CTH U EXTENSION	12/05/2025	\$24,481.14	P
16252958	WOOD COUNTY FIRE CHIEFS ASSOCIATION	I AM RESPONDING - ANNUAL SUB	11/23/2025	\$262.00	P
16252959	SOLARUS	TELEPHONE - WR & HOT MIX	01/01/2026	(Voided)	P
16252960	ADVANCE AUTO PARTS (Wis Rapids)	PARTS	12/02/2025	\$5.95	P
16252961	ADVANCE AUTO PARTS (Wis Rapids)	PARTS	12/02/2025	\$26.37	P
16252962	ADVANCE AUTO PARTS (Wis Rapids)	PARTS	12/04/2025	(\$54.14)	P
16252963	ADVANCE AUTO PARTS (Wis Rapids)	PARTS	12/03/2025	\$46.84	P
16252964	ADVANCE AUTO PARTS (Wis Rapids)	PARTS	12/04/2025	\$11.49	P
16252965	ADVANCE AUTO PARTS (Wis Rapids)	PARTS	12/04/2025	\$111.61	P
16252966	ADVANCE AUTO PARTS (Wis Rapids)	PARTS	12/05/2025	\$8.69	P
16252967	ADVANCE AUTO PARTS (Wis Rapids)	PARTS	12/05/2025	\$20.19	P
16252968	ADVANCE AUTO PARTS (Wis Rapids)	PARTS	12/05/2025	\$40.06	P
16252969	ADVANCE AUTO PARTS (Wis Rapids)	PARTS	12/08/2025	\$79.92	P
16252970	ADVANCE AUTO PARTS (Wis Rapids)	PARTS	12/09/2025	\$176.86	P

HIGHWAY - DECEMBER

16252894 - 16253174

Voucher	Vendor Name	Nature of Claim	Doc Date	Amount	Paid
16252971	ADVANCE AUTO PARTS (Wis Rapids)	PARTS	12/09/2025	\$125.82	P
16252972	ADVANCE AUTO PARTS (Wis Rapids)	PARTS	12/09/2025	\$61.12	P
16252973	ADVANCE AUTO PARTS (Wis Rapids)	PARTS	12/11/2025	\$34.56	P
16252974	ADVANCE AUTO PARTS (Wis Rapids)	PARTS	12/15/2025	\$59.16	P
16252975	ADVANCE AUTO PARTS (Wis Rapids)	PARTS	12/15/2025	\$69.10	P
16252976	ADVANCE AUTO PARTS (Wis Rapids)	PARTS	12/15/2025	\$353.40	P
16252977	ADVANCE AUTO PARTS (Wis Rapids)	PARTS	12/16/2025	\$108.96	P
16252978	ADVANCE AUTO PARTS (Wis Rapids)	PARTS	12/16/2025	\$85.81	P
16252979	ADVANCE AUTO PARTS (Wis Rapids)	PARTS	12/16/2025	\$113.49	P
16252980	ADVANCE AUTO PARTS (Wis Rapids)	PARTS	12/17/2025	(\$44.99)	P
16252981	ADVANCE AUTO PARTS (Wis Rapids)	PARTS	12/17/2025	\$128.29	P
16252982	ADVANCE AUTO PARTS (Wis Rapids)	PARTS	12/18/2025	\$144.99	P
16252983	ADVANCE AUTO PARTS (Wis Rapids)	PARTS	12/18/2025	\$30.00	P
16252984	ADVANCE AUTO PARTS (Wis Rapids)	PARTS	12/19/2025	\$116.99	P
16252985	ADVANCE AUTO PARTS (Wis Rapids)	PARTS	12/19/2025	\$337.66	P
16252986	ADVANCE AUTO PARTS (Wis Rapids)	PARTS	12/19/2025	\$85.37	P
16252987	ADVANCE AUTO PARTS (Wis Rapids)	PARTS	12/22/2025	(\$20.03)	P
16252988	ADVANCE AUTO PARTS (Wis Rapids)	PARTS	12/26/2025	\$21.97	P
16252989	ADVANCE AUTO PARTS (Wis Rapids)	PARTS	12/26/2025	\$154.99	P
16252990	ADVANCE AUTO PARTS (Wis Rapids)	PARTS	12/26/2025	\$144.99	P
16252991	ADVANCE AUTO PARTS (Wis Rapids)	PARTS	12/30/2025	\$90.66	P
16252992	ACE HARDWARE	PARTS	12/01/2025	\$119.46	P
16252993	ACE HARDWARE	PARTS	12/02/2025	\$58.55	P
16252994	ACE HARDWARE	PARTS	12/03/2025	\$175.32	P
16252995	ACE HARDWARE	PARTS	12/11/2025	\$39.96	P
16252996	ACE HARDWARE	PARTS	12/18/2025	\$39.65	P
16252997	ACE HARDWARE	PARTS	12/23/2025	\$53.97	P
16252998	ADVANCE JANITORIAL/CLEAN POWER (Use after 7/31/25)	CLEANING SERVICE AND SUPPLIES	12/31/2025	\$59.86	P
16252999	APPLIED INDUSTRIAL TECHNOLOGIES INC	PARTS	12/05/2025	\$379.58	P
16253000	APPLIED INDUSTRIAL TECHNOLOGIES INC	PARTS	12/05/2025	\$99.28	P
16253001	APPLIED INDUSTRIAL TECHNOLOGIES INC	PARTS	12/09/2025	\$144.78	P
16253002	APPLIED INDUSTRIAL TECHNOLOGIES INC	PARTS	12/13/2025	\$161.85	P
16253003	APPLIED INDUSTRIAL TECHNOLOGIES INC	PARTS	12/11/2025	\$32.18	P
16253004	APPLIED INDUSTRIAL TECHNOLOGIES INC	PARTS	12/13/2025	\$135.54	P
16253005	APPLIED INDUSTRIAL TECHNOLOGIES INC	PARTS	12/12/2025	\$533.16	P
16253006	APPLIED INDUSTRIAL TECHNOLOGIES INC	PARTS	12/11/2025	\$2,411.47	P
16253007	APPLIED INDUSTRIAL TECHNOLOGIES INC	PARTS	12/15/2025	\$164.21	P
16253008	APPLIED INDUSTRIAL TECHNOLOGIES INC	PARTS	12/17/2025	\$74.44	P
16253009	APPLIED INDUSTRIAL TECHNOLOGIES INC	PARTS	12/18/2025	\$60.89	P
16253010	APPLIED INDUSTRIAL TECHNOLOGIES INC	PARTS	12/30/2025	\$29.57	P
16253011	APPLIED INDUSTRIAL TECHNOLOGIES INC	PARTS	12/31/2025	\$90.54	P
16253012	ARING EQUIPMENT COMPANY	PARTS	10/03/2025	(\$313.16)	P
16253013	ARING EQUIPMENT COMPANY	PARTS	11/19/2025	\$271.99	P

HIGHWAY - DECEMBER

16252894 - 16253174

Voucher	Vendor Name	Nature of Claim	Doc Date	Amount	Paid
16253014	ARING EQUIPMENT COMPANY	PARTS	12/22/2025	\$141.18	P
16253015	BROOKS TRACTOR INC	PARTS	12/04/2025	\$183.42	P
16253016	BROOKS TRACTOR INC	PARTS	12/15/2025	\$115.80	P
16253017	CINTAS CORPORATION	CLEANING RUGS AND UNIFORMS	12/02/2025	\$529.73	P
16253018	CINTAS CORPORATION	CLEANING RUGS & UNIFORMS	12/08/2025	\$529.73	P
16253019	CINTAS CORPORATION	CLEANING RUGS & UNIFORMS	12/15/2025	\$567.79	P
16253020	CINTAS CORPORATION	CLEANING RUGS & UNIFORMS	12/22/2025	\$529.73	P
16253021	CINTAS CORPORATION	CLEANING RUGS & UNIFORMS	12/29/2025	\$547.20	P
16253022	CINTAS CORPORATION	CLEANING RUGS & UNIFORMS	12/04/2025	\$1,194.31	P
16253023	CINTAS CORPORATION	CLEANING RUGS & UNIFORMS	12/10/2025	\$1,194.31	P
16253024	CINTAS CORPORATION	CLEANING RUGS & UNIFORMS	12/17/2025	\$1,194.31	P
16253025	CINTAS CORPORATION	CLEANING RUGS & UNIFORMS	12/24/2025	\$1,232.37	P
16253026	CINTAS CORPORATION	CLEANING RUGS & UNIFORMS	12/31/2025	\$1,194.31	P
16253027	CMK STARTER AND ALTERNATOR REBUILD LLC	PARTS	12/26/2025	\$600.00	P
16253028	DECKER SUPPLY CO	PARTS	12/10/2025	\$1,370.20	P
16253029	EMERGENCY LIGHTING & ELECTRONICS LLC	PARTS	12/15/2025	\$990.00	P
16253030	JFTCO INC	PARTS	12/04/2025	\$83.25	P
16253031	JFTCO INC	PARTS	12/12/2025	\$2,332.39	P
16253032	JFTCO INC	PARTS	12/15/2025	(\$368.45)	P
16253033	FASTENAL COMPANY	PARTS	12/10/2025	\$591.31	P
16253034	FASTENAL COMPANY	PARTS	12/10/2025	\$204.32	P
16253035	FASTENAL COMPANY	PARTS	12/10/2025	\$663.55	P
16253036	FASTENAL COMPANY	PARTS	12/19/2025	\$109.78	P
16253037	FASTENAL COMPANY	PARTS	12/17/2025	\$477.10	P
16253038	FASTENAL COMPANY	PARTS	12/23/2025	\$549.82	P
16253039	FASTENAL COMPANY	PARTS	12/23/2025	\$154.43	P
16253040	FERGUSON ENTERPRISES LLC	PARTS	12/01/2025	\$606.99	P
16253041	FERGUSON ENTERPRISES LLC	PARTS	12/15/2025	\$2,984.45	P
16253042	FORCE AMERICA INC	PARTS	12/03/2025	\$628.19	P
16253043	1ST AYD CORPORATION	SHOP SUPPLIES	12/15/2025	\$388.68	P
16253044	FRONTIER	TELEPHONE - MFLD	12/28/2025	\$95.82	P
16253045	HALRON LUBRICANTS INC	PARTS	12/04/2025	\$305.04	P
16253046	HALRON LUBRICANTS INC	PARTS	12/04/2025	\$103.74	P
16253047	HALRON LUBRICANTS INC	PARTS	12/04/2025	\$560.00	P
16253048	HALRON LUBRICANTS INC	PARTS	12/11/2025	\$166.81	P
16253049	HALRON LUBRICANTS INC	PARTS	12/11/2025	\$2,607.00	P
16253050	HALRON LUBRICANTS INC	PARTS	12/11/2025	\$1,347.13	P
16253051	HALRON LUBRICANTS INC	PARTS	12/11/2025	(\$20.00)	P
16253052	HALRON LUBRICANTS INC	PARTS	12/12/2025	(\$20.00)	P
16253053	HALRON LUBRICANTS INC	PARTS	12/31/2025	\$756.80	P
16253054	HALRON LUBRICANTS INC	PARTS	12/31/2025	\$756.80	P
16253055	HYDRAULIC REPAIR SPECIALISTS LLC	PARTS	12/30/2025	\$690.00	P
16253056	INSIGHT FS	LP GAS	12/11/2025	\$116.90	P
16253057	ISTATE TRUCK CENTER	PARTS	12/08/2025	\$714.92	P

HIGHWAY - DECEMBER

16252894 - 16253174

Voucher	Vendor Name	Nature of Claim	Doc Date	Amount	Paid
16253058	ISTATE TRUCK CENTER	PARTS	12/08/2025	\$138.63	P
16253059	ISTATE TRUCK CENTER	PARTS	12/08/2025	\$49.50	P
16253060	ISTATE TRUCK CENTER	PARTS	12/09/2025	\$1,759.36	P
16253061	ISTATE TRUCK CENTER	PARTS	12/09/2025	\$132.59	P
16253062	ISTATE TRUCK CENTER	PARTS	12/09/2025	\$24.17	P
16253063	ISTATE TRUCK CENTER	PARTS	12/09/2025	\$1,492.86	P
16253064	ISTATE TRUCK CENTER	PARTS	12/10/2025	\$1,057.14	P
16253065	ISTATE TRUCK CENTER	PARTS	12/10/2025	\$1,188.01	P
16253066	ISTATE TRUCK CENTER	PARTS	12/10/2025	\$30.75	P
16253067	ISTATE TRUCK CENTER	PARTS	12/11/2025	\$320.08	P
16253068	ISTATE TRUCK CENTER	PARTS	12/11/2025	\$114.30	P
16253069	ISTATE TRUCK CENTER	PARTS	12/12/2025	\$360.99	P
16253070	ISTATE TRUCK CENTER	PARTS	12/12/2025	\$30.05	P
16253071	ISTATE TRUCK CENTER	PARTS	12/15/2025	\$814.92	P
16253072	ISTATE TRUCK CENTER	PARTS	12/15/2025	\$123.74	P
16253073	ISTATE TRUCK CENTER	PARTS	12/15/2025	\$152.88	P
16253074	ISTATE TRUCK CENTER	PARTS	12/16/2025	\$530.48	P
16253075	ISTATE TRUCK CENTER	PARTS	12/17/2025	(\$20.00)	P
16253076	ISTATE TRUCK CENTER	PARTS	12/18/2025	(\$62.10)	P
16253077	ISTATE TRUCK CENTER	PARTS	12/18/2025	(\$287.50)	P
16253078	ISTATE TRUCK CENTER	PARTS	12/18/2025	(\$92.00)	P
16253079	ISTATE TRUCK CENTER	PARTS	12/18/2025	(\$233.75)	P
16253080	ISTATE TRUCK CENTER	PARTS	12/22/2025	\$545.65	P
16253081	ISTATE TRUCK CENTER	PARTS	12/22/2025	\$434.11	P
16253082	ISTATE TRUCK CENTER	PARTS	12/23/2025	\$331.49	P
16253083	ISTATE TRUCK CENTER	PARTS	12/24/2025	\$60.58	P
16253084	ISTATE TRUCK CENTER	PARTS	12/29/2025	\$234.24	P
16253085	ISTATE TRUCK CENTER	PARTS	12/30/2025	\$291.22	P
16253086	ISTATE TRUCK CENTER	PARTS	12/31/2025	(\$60.58)	P
16253087	JOHNSON & SONS CO INC	PARTS	01/01/2025	(\$1,000.00)	P
16253088	JOHNSON & SONS CO INC	PARTS	01/06/2025	\$12.19	P
16253089	JOHNSON & SONS CO INC	PARTS	01/09/2025	\$240.87	P
16253090	JOHNSON & SONS CO INC	PARTS	01/30/2025	\$62.84	P
16253091	JOHNSON & SONS CO INC	PARTS	03/17/2025	\$203.20	P
16253092	JOHNSON & SONS CO INC	PARTS	05/07/2025	\$88.00	P
16253093	JOHNSON & SONS CO INC	PARTS	06/12/2025	\$34.04	P
16253094	JOHNSON & SONS CO INC	PARTS	06/18/2025	\$62.84	P
16253095	JOHNSON & SONS CO INC	PARTS	06/19/2025	\$101.60	P
16253096	JOHNSON & SONS CO INC	PARTS	06/23/2025	\$44.40	P
16253097	JOHNSON & SONS CO INC	PARTS	11/14/2025	\$64.80	P
16253098	JOHNSON & SONS CO INC	PARTS	01/01/2025	\$125.25	P
16253099	JOHNSON & SONS CO INC	PARTS	12/31/2025	(\$40.03)	P
16253100	JX ENTERPRISES INC	PARTS	12/18/2025	\$1,789.48	P
16253101	JX ENTERPRISES INC	PARTS	12/18/2025	\$345.99	P

HIGHWAY - DECEMBER

16252894 - 16253174

Voucher	Vendor Name	Nature of Claim	Doc Date	Amount	Paid
16253102	JX ENTERPRISES INC	PARTS	12/19/2025	\$1,670.29	P
16253103	JX ENTERPRISES INC	PARTS	12/19/2025	(\$627.94)	P
16253104	JX ENTERPRISES INC	PARTS	12/22/2025	\$328.31	P
16253105	JX ENTERPRISES INC	PARTS	12/22/2025	\$230.18	P
16253106	KRIETE TRUCK CENTER	PARTS	12/22/2025	\$664.08	P
16253107	MENARDS-MARSHFIELD	PARTS	12/05/2025	\$232.52	P
16253108	MENARDS-MARSHFIELD	PARTS	12/10/2025	\$41.26	P
16253109	MENARDS-MARSHFIELD	PARTS	12/15/2025	\$52.17	P
16253110	MENARDS-MARSHFIELD	PARTS	12/16/2025	\$91.91	P
16253111	MENARDS-MARSHFIELD	PARTS	12/18/2025	\$289.64	P
16253112	MENARDS-MARSHFIELD	PARTS	12/23/2025	\$29.98	P
16253113	MONROE TRUCK EQUIPMENT	PARTS	12/01/2025	\$3,980.50	P
16253114	MISSISSIPPI WELDERS SUPPLY CO INC	WELDING SUPPLIES	12/11/2025	\$157.25	P
16253115	MISSISSIPPI WELDERS SUPPLY CO INC	WELDING SUPPLIES	12/18/2025	\$7.89	P
16253116	MISSISSIPPI WELDERS SUPPLY CO INC	WELDING SUPPLIES	12/31/2025	\$294.50	P
16253117	NAPA CENTRAL WI AUTO PARTS	PARTS	12/02/2025	(\$144.00)	P
16253118	NAPA CENTRAL WI AUTO PARTS	PARTS	12/03/2025	\$5.98	P
16253119	NAPA CENTRAL WI AUTO PARTS	PARTS	12/09/2025	\$319.00	P
16253120	NAPA CENTRAL WI AUTO PARTS	PARTS	12/12/2025	\$409.50	P
16253121	NAPA CENTRAL WI AUTO PARTS	PARTS	12/18/2025	\$131.96	P
16253122	NAPA CENTRAL WI AUTO PARTS	PARTS	12/18/2025	\$227.96	P
16253123	NAPA CENTRAL WI AUTO PARTS	PARTS	12/18/2025	(\$131.96)	P
16253124	NORTH CENTRAL UTILITY OF WI LLC	PARTS	12/02/2025	\$11.57	P
16253125	NORTH CENTRAL UTILITY OF WI LLC	PARTS	12/03/2025	\$15.28	P
16253126	NORTH CENTRAL UTILITY OF WI LLC	PARTS	12/04/2025	\$148.72	P
16253127	NORTH CENTRAL UTILITY OF WI LLC	PARTS	12/05/2025	\$96.84	P
16253128	NORTH CENTRAL UTILITY OF WI LLC	PARTS	12/09/2025	\$41.86	P
16253129	NORTH CENTRAL UTILITY OF WI LLC	PARTS	12/10/2025	\$93.74	P
16253130	NORTH CENTRAL UTILITY OF WI LLC	PARTS	12/16/2025	\$88.14	P
16253131	NORTH CENTRAL UTILITY OF WI LLC	PARTS	12/18/2025	\$638.98	P
16253132	NOVUS AUTO GLASS	GLASS REPLACEMENT	12/26/2025	\$325.00	P
16253133	NOVUS AUTO GLASS	GLASS REPAIR	12/29/2025	\$475.00	P
16253134	NIEMAN'S TOWING & RECOVERY INC	TOWING	12/31/2025	\$495.00	P
16253135	NIEMAN'S TOWING & RECOVERY INC	TOWING	12/26/2025	\$407.00	P
16253136	NIEMAN'S TOWING & RECOVERY INC	TOWING	12/29/2025	\$842.50	P
16253137	POMP'S TIRE SERVICE INC - Milw	TIRES	12/11/2025	\$671.60	P
16253138	POMP'S TIRE SERVICE INC - Milw	TIRES	12/11/2025	\$585.12	P
16253139	POMP'S TIRE SERVICE INC - Milw	TIRES	12/11/2025	\$1,901.14	P
16253140	POMP'S TIRE SERVICE INC - Milw	TIRES	12/17/2025	\$561.16	P
16253141	POMP'S TIRE SERVICE INC - Milw	TIRES	12/29/2025	\$1,059.08	P
16253142	PROVISION PARTNERS	DIESEL FUEL & GASOLINE	12/31/2025	\$65,961.45	P
16253143	RAPIDS FORD LLC	PARTS	12/19/2025	\$28.41	P
16253144	REIGEL PLUMBING & HEATING INC	PARTS	12/16/2025	\$21.01	P
16253145	REIGEL PLUMBING & HEATING INC	PARTS	12/16/2025	\$15.75	P

HIGHWAY - DECEMBER

16252894 - 16253174

Voucher	Vendor Name	Nature of Claim	Doc Date	Amount	Paid
16253146	REIGEL PLUMBING & HEATING INC	PARTS	12/16/2025	\$56.72	P
16253147	RENT-A-FLASH INC	SIGNS	12/19/2025	\$3,389.65	P
16253148	SCHILLING SUPPLY COMPANY	SHOP SUPPLIES	12/16/2025	\$254.52	P
16253149	SERWE IMPLEMENT MUNICIPAL SALES CO LLC	PARTS	12/04/2025	\$1,955.43	P
16253150	STERNWEIS AND SONS INC	CONCRETE BLOCK	12/05/2025	\$640.00	P
16253151	TOWN OF MARSHFIELD	STADT RD PROJECT	12/31/2025	\$40.04	P
16253152	TRUCK COUNTRY OF WISCONSIN	PARTS	12/03/2025	\$124.26	P
16253153	TRUCK COUNTRY OF WISCONSIN	PARTS	12/09/2025	\$231.18	P
16253154	TRUCK COUNTRY OF WISCONSIN	PARTS	12/18/2025	\$180.00	P
16253155	TRUCK EQUIPMENT INC	PARTS	12/05/2025	\$862.55	P
16253156	TRUCK EQUIPMENT INC	PARTS	12/12/2025	\$104.48	P
16253157	TOOL SHED	PARTS	12/10/2025	\$15.95	P
16253158	UNIVERSAL TRUCK EQUIPMENT INC	PARTS	12/17/2025	\$645.19	P
16253159	UNIVERSAL TRUCK EQUIPMENT INC	PARTS	12/23/2025	\$645.19	P
16253160	WATER WORKS & LIGHTING COMM	UTILITIES - WR SHOP	12/29/2025	\$74.50	P
16253161	WATER WORKS & LIGHTING COMM	UTILITIES - WR SHOP	12/29/2025	\$3,884.05	P
16253162	WATER WORKS & LIGHTING COMM	UTILITIES - WR SHOP	12/29/2025	\$14.68	P
16253163	WATER WORKS & LIGHTING COMM	UTILITIES - WR SHOP	12/29/2025	\$2.48	P
16253164	WATER WORKS & LIGHTING COMM	UTILITIES - WR SHOP	12/29/2025	\$2.48	P
16253165	WATER WORKS & LIGHTING COMM	UTILITIES - HOT MIX	12/29/2025	\$916.62	P
16253166	WATER WORKS & LIGHTING COMM	UTILITIES - BRINE PLANT	12/29/2025	\$1,116.04	P
16253167	AMAZON CAPITAL SERVICES	PARTS	12/16/2025	\$199.99	P
16253168	ROGANS SHOES	SAFETY SHOES	09/30/2025	\$122.00	P
16253169	QUALITY FOODS IGA WEST GRAND	SNOWFIGHTER APPRECIATION	12/01/2025	\$117.00	P
16253170	WOOD COUNTY REGISTER OF DEEDS	CTH U RECORDING FEE	12/10/2025	\$30.00	P
16253171	US BANK	PROCUREMENT CARD PURCHASES	12/31/2025	\$303.83	
16253172	K&C CLEANING LLC	MARSHFIELD SHOP CLEANING	12/01/2025	\$175.00	
16253173	CONTECH ENGINEERED SOLUTIONS LLC	T/RICHFIELD CULVERT	12/12/2025	\$30,100.00	
16253174	UNIFIRST CORPORATION	SAFETY GEAR	12/23/2025	\$74.91	
Grand Total:				\$600,850.75	

Signatures

Committee Chair:

Committee Member:

Committee Member:

Committee Member:

Committee Member:

Committee Member:

Committee Member:

Committee Member:

Committee Member:



RESOLUTION#

DATE February 17, 2026

Effective
Date

February 17, 2026

Page 1 of 2

Judicial & Legislative and Highway Infrastructure & Recreation Committees

Introduced by

Motion:	Adopted:	<input type="checkbox"/>
1 st	Lost:	<input type="checkbox"/>
2 nd	Tabled:	<input type="checkbox"/>
No: _____	Yes: _____	Absent: _____
Number of votes required:		
<input checked="" type="checkbox"/> Majority	<input type="checkbox"/> Two-thirds	
Reviewed by: _____, Corp Counsel		
Reviewed by: _____, Finance Dir.		

INTENT & SYNOPSIS: To encourage the Governor of Wisconsin and the State Legislature to enact a comprehensive, sustainable transportation funding solution

FISCAL NOTE: None

WHEREAS, local units of government in Wisconsin own and maintain approximately 90% of the public road miles in the state, including county highways, town roads, and city and village streets; and

WHEREAS, Wisconsin's economy—rooted in agriculture, manufacturing, and tourism—relies on a safe, reliable, and well-maintained transportation network; and

WHEREAS, local governments greatly appreciate the one-time infusions of General Purpose Revenue, primarily sales and income taxes, and other revenue provided in recent state budgets, which have enabled the initiation and continuation of the successful and popular Local Roads Improvement Program Supplemental (LRIP-S) and Agricultural Roads Improvement Program (ARIP); and

WHEREAS, despite modest increases from the state over the years, transportation aids to local governments remain insufficient to keep pace with inflation and rising construction costs, leaving many communities funded below 2000 levels in real dollars; and

WHEREAS, local governments throughout Wisconsin continue to struggle to perform even routine maintenance, pavement preservation,

and safety improvements, resulting in deteriorating roads and bridges; and

WHEREAS, the inaugural inventory and assessment of small bridges between 6 to 20 feet found about 10% of the nearly 17,000 structures to be in poor or severe condition; and

Adopted by the County Board of Wood County, February 17, 2026

County Clerk

County Board Chairman

WHEREAS, levy limits and other fiscal constraints prevent local governments from independently filling the funding gap created by inadequate state transportation aids; and WHEREAS, absent sustainable state funding, many communities have been forced to address their shortfalls by significantly increasing borrowing, deferring essential projects, or imposing local vehicle registration (“wheel”) taxes; and

WHEREAS, Wisconsin motorists currently pay among the lowest transportation user fees in the Midwest, while neighboring states and dozens of others nationwide have enacted long-term revenue measures to keep their transportation systems competitive; and

WHEREAS, Wisconsin is increasingly relying on General Purpose Revenues to make needed investments, potentially pitting transportation against other vital services, such as education; and WHEREAS, continued lack of growing, dedicated, and predictable revenue places Wisconsin at a growing economic disadvantage by threatening the efficiency of freight movement, the safety of travelers, and the attractiveness of our state to businesses and residents; and

WHEREAS, both Wisconsin’s aging Interstate highway system—largely constructed in the 1950s and 1960s—and our extensive network of state and local roads require predictable, adequate, and sustainable funding to meet current and future needs;

NOW, THEREFORE, BE IT RESOLVED that the Wood County Board of Supervisors strongly urges the Governor of Wisconsin and the State Legislature to enact a comprehensive, sustainable transportation funding solution that:

1. Provides adequate and reliable revenue growth for the efficient long-term planning and execution of state and local transportation programs;
2. Includes responsible and prudent use of General Purpose Revenue and bonding;
3. Adjusts any new and existing transportation user fees and other revenue mechanisms to sustain purchasing power in order to maintain and improve Wisconsin’s transportation infrastructure; and
4. Ensures transportation continues to deliver for Wisconsin by adequately funding reconstruction, preservation, and safety investments on the state and local systems.

BE IT FURTHER RESOLVED that the County Clerk is hereby directed to transmit a copy of this resolution to the Governor’s office, all members of the Wisconsin State Senate and Assembly representing districts within Wood County and the Wisconsin Counties Association.

**TABLE OF CONTENTS
SPEED LIMITS ORDINANCE**

WOOD COUNTY ORDINANCE #400.....	400-1
Chapter 400 .01 PURPOSE	400-1
Chapter 400 .015 TEMPORARY SPEED RESTRICTIONS IN CONSTRUCTION ZONES	400-6
Chapter 400 .02 PENALTIES	400-7

WOOD COUNTY ORDINANCE #400 SPEED LIMITS

Chapter 400 .01 PURPOSE

A traffic and engineering investigation having been made of the following described highways in Wood County, the maximum permissible speed at which vehicles may be operated on the highways, which speed is herewith established as reasonable and safe pursuant to s. 346.57 and s. 349.11, Wis. Stats., shall be set forth herein, subject to approval by the State Department of Transportation and upon the erection of standard signs giving notice thereof.

(AA.13.01) County Trunk Highway "AA", Town of Port Edwards, Wood County
Thirty-five (35) miles per hour from the Nekoosa City Limits southerly to a point 0.16 miles north of Lynn Hill Rd.

(B.10.01) County Trunk Highway "B", Town of Lincoln, Wood County
Forty-five (45) miles per hour from County Trunk Highway BB northerly to **a point 0.14 miles north of** Yellow River Rd.

(BB.03.01) County Trunk Highway "BB", Town of Cameron, Wood County
Forty-Five (45) miles per hour from its easterly intersection with Highway 10, then westerly to CTH B.

(C.33.01) County Trunk Highway "C", Village of Rudolph, Wood County
Thirty-five (35) miles per hour from its intersection with State Trunk Highway 34, westerly for a distance of 0.27 of a mile to Hilltop Ln.

(C.33.02) County Trunk Highway "C", Village of Rudolph, Wood County
Twenty-five (25) miles per hour from its intersection with State Trunk Highway 34, easterly for a distance of 0.83 of a mile to Oakridge Ave.

(C.34.03) County Trunk Highway "C", Village of Vesper, Wood County
Twenty-five (25) miles per hour for all vehicles from its intersection with State Trunk Highway 186, westerly and southerly for a distance of 0.55 of a mile.

(E.25.04) County Trunk Highway "E", City of Pittsville, Wood County
Twenty-five (25) miles per hour from its intersection with State Trunk Highway 80, westerly to its intersection with Park Road, a distance of 0.69 of a mile.

(F.12.01) County Trunk Highway "F", Town of Milladore, Wood County
Thirty-five (35) miles per hour for all vehicles from its intersection with U.S. Highway 10 southerly to its intersection with CTH P.

- (F.12.02)** County Trunk Highway "F", Town of Milladore, Wood County
Thirty five (35) miles per hour for all vehicles from its intersection with CTH P, southerly for a distance of 0.32 of a mile.
- (F.20.01)** County Trunk Highway "F", Town of Sherry, Wood County
Thirty five (35) miles per hour beginning at a point 0.23 of a mile north of the north junction with County Trunk Highway "N" and extending southerly one half mile to a point 0.15 of a mile south of Mill Creek.
- (F.21.01)** County Trunk Highway "F", Town of Sigel, Wood County
Fifty (50) miles per hour from the intersection of County Trunk Highways "F" and "HH" easterly to a point 0.14 miles east of said junction.
- (F.26.01)** County Trunk Highway "F", City of Wisconsin Rapids, Wood County
Thirty-five (35) miles per hour for all vehicles 0.06 miles north from its crossing with the Green Bay St., northerly to its intersection with Rosecrans Street.
- (F.26.02)** County Trunk Highway "F", City of Wisconsin Rapids, Wood County
Forty-five (45) miles per hour for all vehicles from its intersection with Rosecrans Street, northerly and westerly to its intersection with Brickyard Road.
- (F.26.03)** County Trunk Highway "F", City of Wisconsin Rapids, Wood County
Twenty-five (25) miles per hour for all vehicles from West Grand Ave. northerly to a point 0.06 miles north from its crossing with the Green Bay St.
- (G.13.01)** County Trunk Highway "G", Town of Port Edwards, Wood County
Forty-five (45) miles per hour from 0.44 miles south of Creamery Rd northerly to 0.30 miles south of Lynn Hill Rd.
- (G.13.02)** County Trunk Highway "G", Town of Port Edwards, Wood County
Forty-five (45) miles per hour from its northerly intersection with State Highway 173 easterly and northerly 0.26 miles north of Cranmoor Rd.
- (H.10.01)** County Trunk Highway "H", Town of Lincoln, Wood County
Thirty-five (35) miles per hour from Lincoln Ave. westerly to a point 0.13 miles west of Lincoln Ave.
- (H.11.01)** County Trunk Highway "H", Town of Marshfield, Wood County
Forty-Five (45) miles per hour from the east city limits of Marshfield (Galvin Ave.), then easterly a distance of .80 miles.
- (HH.21.01)** County Trunk Highway "HH", Town of Sigel, Wood County
Fifty (50) miles per hour from a point 0.07 miles west of the junction of County Trunk Highways "F" and "HH" easterly to the intersection of County Trunk Highways "F" and "HH".

- (HH.34.01)** County Trunk Highway "HH", Village of Vesper, Wood County
Thirty-five (35) miles per hour for all vehicles from its intersection with State Trunk Highway 186, easterly for a distance of 0.46 of a mile.
- (N.20.01)** County Trunk Highway "N", Town of Sherry, Wood County
Thirty-five (35) miles per hour for all vehicles from its northerly intersection with County Trunk Highway "F" easterly a distance of .22 miles.
- (N.27.01)** County Trunk Highway "N", Village of Arpin, Wood County
Thirty-five (35) miles per hour from its junction with State Trunk Highway 186, westerly for a distance of 0.37 of a mile.
- (N.27.02)** County Trunk Highway "N", Village of Arpin, Wood County
Twenty-five (25) miles per hour from a point 0.37 of a mile west of its junction with State Trunk Highway 186, westerly to its intersection with County Trunk Highway "E".
- (P.12.01)** County Trunk Highway "P", Town of Milladore, Wood County
Forty (40) miles per hour from 0.24 miles west of Mayflower Rd westerly to 0.20 miles west of CTH F.
- (P.28.01)** County Trunk Highway "P", Village of Auburndale, Wood County
Forty (40) miles per hour from Marshfield St. northerly and easterly to EZ St.
- (P.28.02)** County Trunk Highway "P", Village of Auburndale, Wood County
Thirty-five (35) miles per hour from EZ St. easterly to 0.07 miles west of School Ave.
- (P.28.03)** County Trunk Highway "P", Village of Auburndale, Wood County
Twenty-five (25) miles per hour from 0.07 miles west of School Ave easterly to North Rd.
- (P.28.04)** County Trunk Highway "P", Village of Auburndale, Wood County
Thirty-five (35) miles per hour from North Rd. easterly to 0.29 miles east of Connor St.
- (P.28.05)** County Trunk Highway "P", Village of Auburndale, Wood County
Forty-five (45) miles per hour from 0.29 miles east of Connor St. easterly to a point 0.56 miles east of Connor St.
- (P.31.01)** County Trunk Highway "P", Village of Milladore, Wood County
Forty (40) miles per hour from 0.14 miles west of CTH N westerly to a point 0.29 miles west of CTH N.

- (P.31.02)** County Trunk Highway “P”, Village of Milladore, Wood County
Thirty (30) miles per hour from 0.29 miles west of CTH N westerly to 0.08 miles west of West St.
- (P.31.03)** County Trunk Highway “P”, Village of Milladore, Wood County
Forty (40) miles per hour from 0.08 miles west of West St westerly to 0.30 miles west of West St.
- (Q.19.01)** County Trunk Highway “Q”, Town of Seneca, Wood County
Forty-five (45) miles per hour from State Trunk Highway 73 westerly and southerly to a point 0.24 miles west of the south intersection with Hafermann Hts.
- (T.30.01)** County Trunk Highway "T", Village of Hewitt, Wood County
Twenty-five (25) miles per hour for all vehicles from a point 0.28 of a mile south of Yellowstone Drive in the Village of Hewitt, northerly to a point 0.81 of a mile north of Yellowstone Drive.
- (T.30.02)** County Trunk Highway "T", Village of Hewitt, Wood County
Thirty-five (35) miles per hour for all vehicles from a point 0.81 of a mile north of Yellowstone Drive in the Village of Hewitt, northerly to its intersection with County Trunk Highway "H".
- (T.30.03)** County Trunk Highway "T", Village of Hewitt, Wood County
Forty-five (45) miles per hour for all vehicles from a point 0.28 miles south of Yellowstone Drive southerly to a point 0.41 miles north of United States Highway 10.
- (U.07.01)** County Trunk Highway "U", Town of Grand Rapids, Wood County
Thirty-five (35) miles per hour for all vehicles from its westerly intersection with State Trunk Highway 54, northerly 0.50 of a mile.
- (U.29.01)** County Trunk Highway "U", Village of Biron, Wood County
Thirty-five (35) miles per hour 0.50 miles north of its west intersection with STH 54, northerly to 0.23 miles west of Huffman Road.
- (U.29.02)** County Trunk Highway "U", Village of Biron, Wood County
Twenty five (25) miles per hour from 0.23 miles west of Huffman Road to Huffman Road.
- (U.29.03)** County Trunk Highway "U", Village of Biron, Wood County
Thirty five (35) miles per hour from Huffman Road to 80th Street North.
- (T.30.02)** County Trunk Highway "T", Village of Hewitt, Wood County
Twenty-five (25) miles per hour from its intersection with South Biron Drive, northerly and easterly to its intersection with Center Street.

- (T.30.02)** County Trunk Highway "T", Village of Hewitt, Wood County
Thirty-five (35) miles per hour from its intersection with Center Street, northeasterly to the Portage County Line and North Biron Drive.
- (V.16.01)** County Trunk Highway "V", Town of Rock, Wood County
Thirty-five (35) miles per hour from a point 0.10 of a mile north of its intersection with County Trunk Highway "N" southerly for a distance of 0.67 of a mile.
- (W.07.01)** County Trunk Highway "W", Town of Grand Rapids, Wood County
Forty-five (45) miles per hour for all vehicles from 20th Street (east City limits of Wisconsin Rapids) easterly to 42nd Street South for a distance of 1.40 miles
- (W.07.02)** County Trunk Highway "W", Town of Grand Rapids, Wood County
Thirty-five (35) miles per hour for all vehicles from 42nd Street South easterly to 0.04 miles west of 54th Street South for a distance of 0.71 miles
- (W.07.03)** County Trunk Highway "W", Town of Grand Rapids, Wood County
Forty five (45) miles per hour for all vehicles from 0.04 miles west of 54th Street South easterly a distance of 1.68 miles to the junction with County Trunk Highways "U", "W" and Portage County Trunk Highway "FF"
- (W.07.04)** County Trunk Highway "W", Town of Grand Rapids, Wood County
Forty-five (45) miles per hour for all vehicles from the junction of County Trunk Highway "U" and County Trunk "W" southerly about 0.75 miles to its junction with South Park Road.
- (W.07.05)** County Trunk Highway "W", Town of Grand Rapids, Wood County
Thirty-five (35) miles per hour for all vehicles from South Park Road southerly about 0.50 miles to 0.06 Miles South of Rail Road St.
- (Y.10.01)** County Trunk Highway "Y", Town of Lincoln, Wood County
Forty-Five (45) miles per hour from 0.07 miles west of Hawthorn Ave easterly to Magnolia Drive.
- (Y.10.02)** County Trunk Highway "Y", Town of Lincoln, Wood County
Thirty-Five (35) miles per hour from Magnolia Drive easterly to a Point 0.13 miles west of Lincoln Ave.
- (Y.10.03)** County Trunk Highway "Y", Town of Lincoln, Wood County
Twenty-Five (25) miles per hour from a point 0.13 miles west of Lincoln Ave easterly to Lincoln Ave.
- (Y.11.01)** County Trunk Highway "Y", Town of Marshfield, Wood County
Forty five (45) miles per hour from its intersection with North Galvin Avenue,

easterly to its intersection with Stadt Road, a distance of 1.05 miles.

(Z.07.01) County Trunk "Z", Town of Grand Rapids, Wood County

Thirty five (35) miles per hour from 0.11 miles west of its intersection with Lincoln Street, easterly to a point 0.42 of a mile east of State Trunk Highway 13, a distance of 0.57 0.68 of mile.

(Z.07.02) County Trunk "Z", Town of Grand Rapids, Wood County

Forty five (45) miles per hour for all vehicles from a point 0.42 of mile east of Stat Trunk Highway "13" to a point 0.05 of a mile east of 64th Street CTH U / Portage County Line.

(Z.18.01) County Trunk "Z", Town of Saratoga, Wood County

Thirty-five (35) miles per hour for all vehicles from its east intersection with State Trunk Highway 73, northerly to its intersection with Ranger Road.

(Z.32.01) County Trunk Highway "Z", Village of Port Edwards, Wood County

Forty-five (45) miles per hour from 0.11 miles west of its intersection with Lincoln Street, westerly and southerly to its intersection with Ranger Road.

Chapter 400 .015 TEMPORARY SPEED RESTRICTIONS IN CONSTRUCTION ZONES

- (1) If a highway is being constructed, reconstructed, maintained or repaired, temporary speed limits may be established as set forth in Wis. Stat. s. 349.11(10).
- (2) The Wood County Highway Commissioner, or his/her designee, is authorized, at his/her discretion, to impose mandatory temporary speed limits under the continuing authority of this section and without need of further action by the county board or the oversight committee.
- (3) Temporary speed limits shall be in accord with this section and shall be imposed by the posting of either portable or fixed temporary regulatory speed limit signs of the same face size and design as permanent regulatory speed limit signs, type R2-1, as described in the Manual on Uniform Traffic Control Devices as adopted by the Wisconsin Department of Transportation.
- (4) Signs may be posted on any highway under the jurisdiction of this authority and any state trunk highway upon which the County performs maintenances under s.84.07, Wis. Stats. when such highway is being constructed, reconstructed, maintained or repaired, but only in the immediate area of such work and of those persons engaged in performing such work.
- (5) Any temporary speed limit imposed in an area where construction, reconstruction, maintenance, or repair is being performed on the shoulders or what is normally the

traveled portion of the roadway, shall be determined by, and at the discretion of, the Wood County Highway Commissioner or his/her designee.

- (6) No temporary speed limit shall be imposed when construction, reconstruction, or maintenance repair work is being performed inside the highway right-of-way but not on the shoulders or the traveled portion of the highway.
- (7) Any speed limits imposed under the authority of this section are temporary, and the signs imposing such limits shall be removed, covered or otherwise obscured when the highway construction or maintenance workers performing construction, reconstruction, maintenance or repairs and their equipment are not present on the shoulder or traveled portion of the highway.
- (8) The area in which any temporary speed limit has been imposed shall be terminated by posting a regulatory speed limit sign informing the public of the specific speed limit outside of the area where construction, reconstruction, maintenance or repair work is being performed.
- (9) Nothing herein shall prohibit the Wood County Highway Department from posting advisory speed limit signs of the type W13-1 as described in the Manual of Uniform Traffic Control Devices, in areas of highway construction, reconstruction, maintenance, or repairs suggesting such speed as it deems appropriate to promote the safety of highway construction and maintenance workers, pedestrians, and highway users and that such advisory signs may also be posted in conjunction with the temporary mandatory speed limit signs, as described and authorized above.

Chapter 400 .02 PENALTIES

Any person violating any provision of this ordinance may be required to forfeit not less than \$20.00 nor more than \$200.00.



RESOLUTION#

DATE February 17, 2026
Effective
Date Upon Passage & Posting

Page 1 of 1

Introduced by Highway Infrastructure and Recreation Committee

Motion:	Adopted:	<input type="checkbox"/>
1 st	Lost:	<input type="checkbox"/>
2 nd	Tabled:	<input type="checkbox"/>
No: _____	Yes: _____	Absent: _____
Number of votes required:		
<input checked="" type="checkbox"/> Majority	<input type="checkbox"/> Two-thirds	
Reviewed by: _____, Corp Counsel		
Reviewed by: _____, Finance Dir.		

INTENT & SYNOPSIS: To amend Wood County Ordinance #400, Speed Limits Ordinance, to change the speed limit on a portion of County Trunk Highway B

FISCAL NOTE: None

WHEREAS, Wood County currently has adopted Ordinance #400 regulating speed limits on county trunk highways, and

WHEREAS, Wood County Ordinance 400.B.10.01 currently sets a speed limit on County Trunk Highway "B" in the Town of Lincoln at forty-five (45) miles per hour from County Trunk Highway BB northerly to Yellow River Road.

WHEREAS, the Highway Commissioner believes a change in speed limit is warranted on a portion of County Trunk Highway B, extending northerly beyond Yellow River Road, from its currently posted speed of fifty-five (55) mph to forty-five (45) miles per hour, and has performed a traffic and engineering investigation confirming a speed reduction is warranted, and

WHEREAS, the Highway Infrastructure & Recreation Committee has reviewed the extended-area of County Trunk Highway B and recommends that Wood County adopt the recommended changes to the Speed Limits Ordinance,

NOW THEREFORE BE IT ORDAINED, that the Wood County Board of Supervisors hereby determines to modify the following section of Wood County Speed Limits Ordinance #400

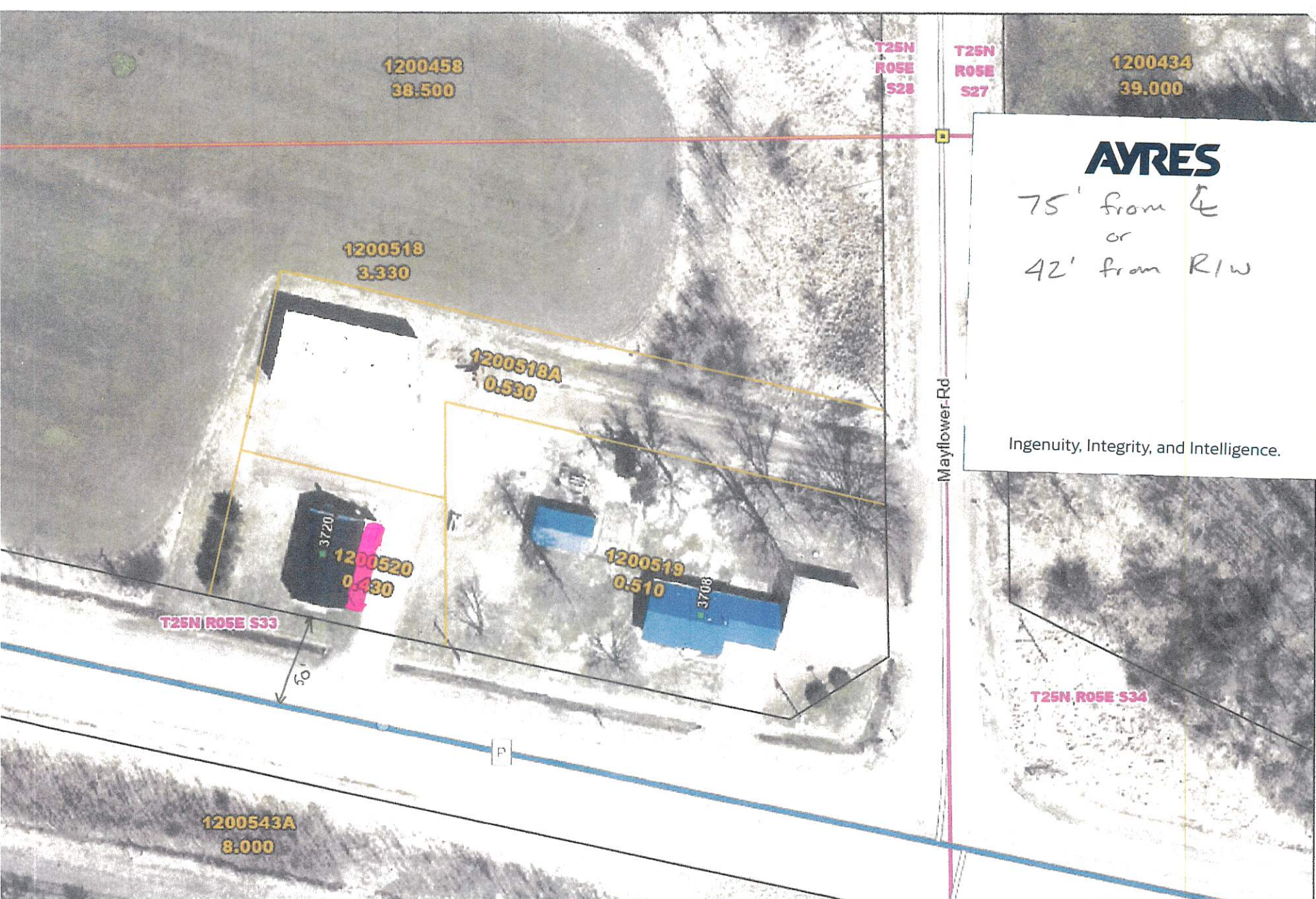
(B.10.01) County Trunk Highway "B", Town of Lincoln, Wood County forty-five (45) miles per hour from County Trunk Highway BB northerly to a point 0.14 miles north of Yellow River Rd.

NOW THEREFORE BE IT FURTHER ORDAINED, that the Wood County Highway Ordinance #400 as adopted by this action become effective upon passage and posting as required by statute.

Adopted by the County Board of Wood County, February 17, 2026

County Clerk

County Board Chairman

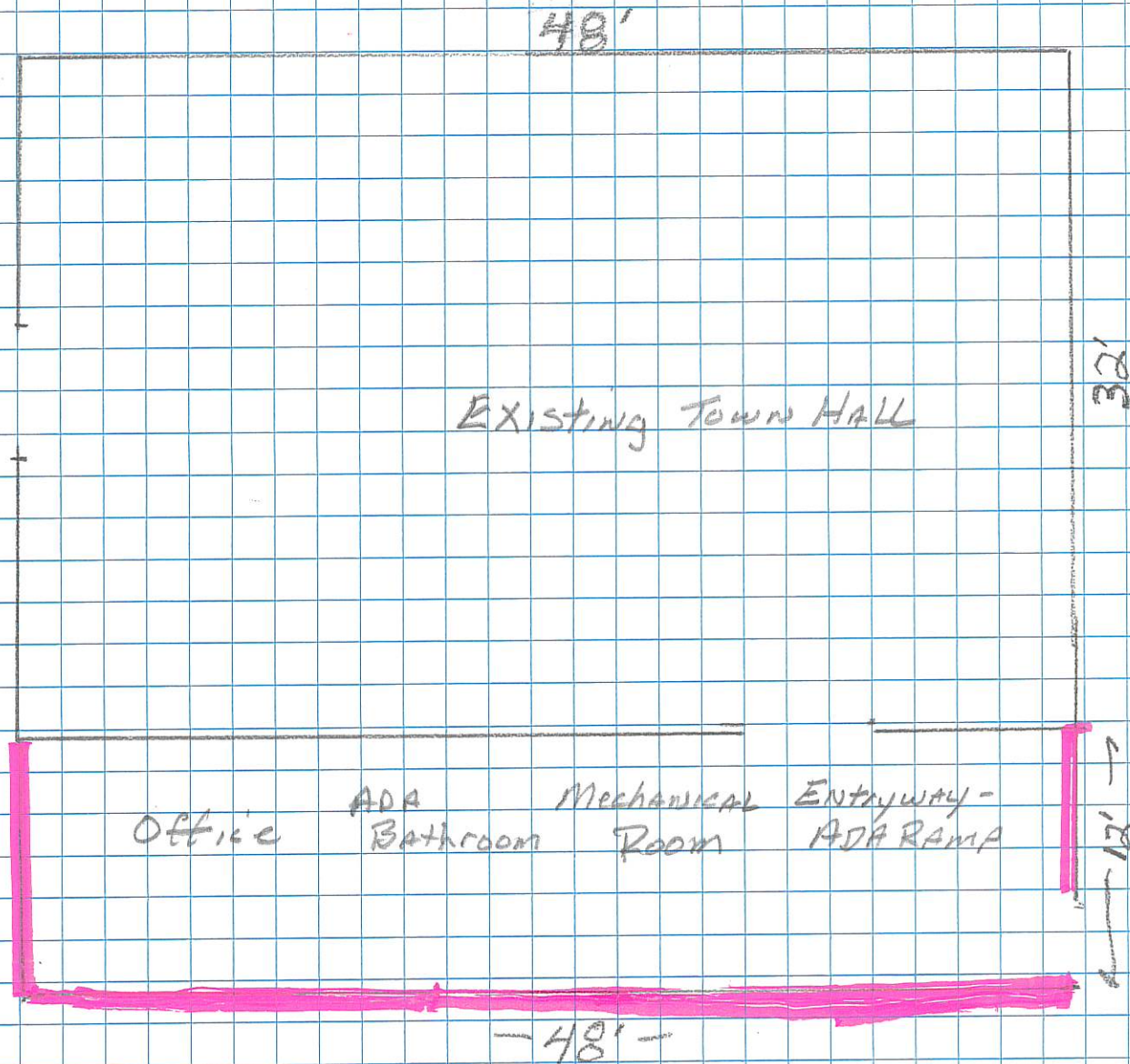


Wood County Land Information Office

Author: Wood County Land Information Office
Date Printed: 11/25/2021 2:08 PM

DISCLAIMER: This map is not a survey. No information on this website is intended to serve as legal evidence of size, shape, location or ownership of real estate or environmental features. Wood County assumes no liability related to the use of this map.







Parks & Forestry Department Reports

February 5, 2026

Director Report, by Chad Schooley

- Powers Bluff Trailhead Shelter project is moving along. Cold temps and material delays have slowed progress somewhat. Windows are being installed week of Jan. 26th. Metal roof will be installed week of February 9th.
- Dexter Beach Shelter Building plans have been submitted for State review. Septic design is also being completed at this time.
- South Park 2nd Loop Campground Shower Building initial plans are being reviewed by staff. Submittal for State review will follow. Hoping to have these projects bid out over the next couple months.
- Hwy Dpt is handling the bidding process for the North Park bridge replacement project. The bids will be for supplying the bridge structure. Hwy staff will be removing existing bridge and installing the new structure.
- There are 2 resolutions in the packet relating to exceeding 2025 budgeted expenses.
- Representatives from the Aqua Skiers will be at the meeting to discuss their desire to make site improvements at Red Sands Beach.
- I will not be in attendance for the HIRC meeting. I will be at the Wisconsin Parks & Recreation Association (WPRA) annual conference, in Wisconsin Dells. Stacie, Dan, and Fritz will be in attendance.
- **Special Use Permits**
 - North Park Disc Golf Tournaments for 2026- Request for course closure during these events for the general public. Dates: May 2, May 30, August 22. Fees in the past included: Park Area Use Fee: \$75/event; and \$3/participant for each event. I would recommend approving these events.

Maintenance Program Supervisor Report, by Dan Vollert

Construction Projects

- South Park: Prepping for new Loop 2 showerhouse. Taking down old vault toilet.
- Dexter Park: Finalizing plans for new beach shelter building.
- Powers Bluff: New Trailhead Shelter construction project continuing. Parks staff working on staining pine tongue & groove boards for open shelter ceiling.
- Powers Bluff: Power installed underground on top of hill (old part of park). Trailhead Building-, 3 phase electrical completed.
- North Park: New Puff Creek bridge up for bid. Highway Dept to install.

Maintenance Operations

- Dexter Park: Clear coating tongue & groove for new beachhouse. Dead tree cleanup, table repair, and snow removal.
- South Park: Dead tree cleanup, snow removal, shelter & bathroom cleaning.
- NEPCO Park: Shelter cleaning, snow removal, tree cleanup.
- North Park: Ash and other dead tree removal.

- Powers Bluff: Grooming tube/ski hills, x-country ski & multiuse trails. Winter operations. New Shop upgrades.
- CERA Park: Firewood processing, brush burning, old marina cleanup.

Employee Matters

- All FTE's and some LTE's scheduled for Powers Bluff Winter Operations.
- Still looking for another First Responder for Powers Bluff Operations.

Snowmobile/ATV

- Auburndale (DH) Snowmobile Bridge project off of CTH N east of Arpin has been completed and Grant Reimbursement has been submitted.
- Snowmobile trails have been OPEN and PARTIALLY OPEN. Could use more snow.
- Range Road ATV Connector Trail to Intensive Use Area road base is complete. Needs to be graded in spring to finish Grant.

Office Supervisor Report, by Stacie Kleifgen

- Reconciled 2025 year end budgets, reports and tracking spreadsheets and prepared new documents for 2026.
- Assisted with Resolutions and Grants.
- Attended Friends of Powers Bluff Meeting

Forest Administrator Report, by Fritz Schubert

- Timber Sales: Ten active timber sales in January. Logging activity on Wood County Forest has remained at a high level due to good winter logging conditions and fair wood markets. Currently revenue received along with amounts billed in January amount to about \$238K, or roughly 59% of 2026 budgeted revenue.
- Attended Wood County Wildlife Area Advisory Committee Meeting.
- Completed agreement with FGM Wilderness Cranberry LLC.
- Developed 2026 Wood County Forest Annual Work Plan.
- Forestry Technician: Continued grading, prepping, spreading road base associated with new ATV trail project, aka Range Road Connector, north of HWY 54 and ATV intensive use area. Assisted with Accessible Hunting Area signs and gates. Plowed snow and assisted with freezing down logging roads for timber sale access.



RESOLUTION#

DATE February 17, 2026

Effective Date Upon passage & publication

Page 1 of 1

Highway Infrastructure & Recreation Committee and Operations Committee

Introduced by

Motion:	Adopted:	<input type="checkbox"/>
1 st	Lost:	<input type="checkbox"/>
2 nd	Tabled:	<input type="checkbox"/>
No: _____	Yes: _____	Absent: _____
Number of votes required:		
<input type="checkbox"/> Majority	<input checked="" type="checkbox"/> Two-thirds	
Reviewed by: _____ NF _____, Corp Counsel		
Reviewed by: _____ PY _____, Finance Dir.		

INTENT & SYNOPSIS: To amend the 2025 Parks and Forestry Department Administration Budget (55210) for additional expenditures that were not anticipated during the original budget process.

FISCAL NOTE: No additional cost to Wood County. The source of funding is unanticipated revenues from Insurance Recoveries (48440) and County Forest Revenue (46813) revenue accounts. The adjustment to the budget is as follows:

Account	Account Name	Debit	Credit
55210	Parks and Forestry Admin		\$28,335
48440	Parks Insurance Recoveries	\$22,500	
46813	County Forest Revenue	\$ 5,835	

WHEREAS, the Parks and Forestry Administration Budget has incurred unanticipated expenditures due to purchasing a replacement vehicle that was involved in an accident, and from taking over management of Cera Park, and

WHEREAS, revenues from Insurance Recoveries and Forestry timber sales exceeded the 2025 budget and will offset the unanticipated expenditures, and

WHEREAS, rule 5.03 of the Wood County Board of Supervisors states that “an amendment to the budget is required any time the actual costs will exceed the budget at the function level”, and

NOW THEREFORE BE IT RESOLVED, to amend the Parks and Forestry Administration Budget (55210) for 2025 by appropriating \$22,500 of unanticipated revenues from Insurance Recoveries (48440) and \$5,835 of unanticipated revenues from County Forest Revenue (46813), and

BE IT FURTHER RESOLVED, that pursuant to Wis. Stat. 65.90(5), the County Clerk is directed to post a Class 1 notice of the budget change within 15 days.

Adopted by the County Board of Wood County, February 17, 2026

County Clerk

County Board Chairman



RESOLUTION#

DATE February 17, 2026

Effective Date Upon passage & publication

Page 1 of 2

Highway Infrastructure & Recreation Committee and Operations Committee

Introduced by

Motion:	Adopted:	<input type="checkbox"/>
1 st	Lost:	<input type="checkbox"/>
2 nd	Tabled:	<input type="checkbox"/>
No: _____	Yes: _____	Absent: _____
Number of votes required:		
<input type="checkbox"/> Majority	<input checked="" type="checkbox"/> Two-thirds	
Reviewed by: _____ NF _____, Corp Counsel		
Reviewed by: _____ PY _____, Finance Dir.		

INTENT & SYNOPSIS: To amend the 2025 budget for the Parks & Forestry Capital Projects function (56913) for expenditures not anticipated during the 2025 budget process.

FISCAL NOTE: No additional cost to Wood County. The source of funding is unanticipated revenues from Parks State Aid (43576). The adjustment to the budget is as follows:

Account	Account Name	Debit	Credit
56913	Parks & Forestry Capital Projects		\$244,917
43576	Parks State Aid	\$244,917	

		NO	YES	A
1	Schulz, W			
2	Rozar, D			
3	Buttke, T			
4	Perlock, R			
5	Hovendick, T			
6	Breu, A			
7	Voight, W			
8	Hahn, J			
9	Brehm, S			
10	Thao, L			
11	Penzkover, J			
12	Valenstein, L			
13	Hokamp, J			
14	Polach, D			
15	Clendenning, B			
16	Pliml, L			
17	Zurfluh, J			
18	Hamilton, B			
19	Leichtnam, B			

WHEREAS, the Parks Capital Projects expenditures function (56913) costs were not anticipated or budgeted for during the 2025 Parks and Forestry budget process, and

WHEREAS, current capital projects with pending grant reimbursement are multi-year projects, and

WHEREAS, awarded grant reimbursement is not received until project completion, and

WHEREAS, unanticipated grant reimbursement received in 2025 is sufficient to cover the unanticipated expenditures, and

WHEREAS, rule 5.03 of the Wood County Board of Supervisors states that “an amendment to the budget is required any time the actual costs will exceed the budget at the function level”.

NOW THEREFORE BE IT RESOLVED, to amend the Parks & Forestry Capital Projects (56913) 2025 Budget by appropriating \$244,917 of unanticipated revenues from Parks State Aid (43576), and

Adopted by the County Board of Wood County, February 17, 2026

County Clerk

County Board Chairman

BE IT FURTHER RESOLVED that pursuant to Wis. Stat. 65.90(5), the County Clerk is directed to post a Class 1 notice of this budget change within 15 days.



RESOLUTION#

DATE February 17, 2026

Effective
Date

Upon passage & posting

Page 1 of 2

Introduced by Highway Infrastructure & Recreation Committee

Motion:	Adopted:	<input type="checkbox"/>
1 st	Lost:	<input type="checkbox"/>
2 nd	Tabled:	<input type="checkbox"/>
No: _____	Yes: _____	Absent: _____
Number of votes required:		
<input checked="" type="checkbox"/> Majority	<input type="checkbox"/> Two-thirds	
Reviewed by: _____	NF	, Corp Counsel
Reviewed by: _____	PY	, Finance Dir.

INTENT & SYNOPSIS: To become eligible for maintenance monies on the existing:

- a) Wood County ATV Intensive Use Area (All-Terrain Vehicle) trail, in the designated area of T22N, R35E, S31, 32, and;
- b) The Kimball & Hazelnut Connector Trail of 5.1 miles at T22N, R5E, S32 and T21N, R4E, S18, 19, 30, 13, 24, 25, and;
- c) The Hay Creek-Peterson Road Connector Trail of 4.0 miles at T22N, R2E, S8, 17, 20, 21, and;
- d) The Range Road Connector Trail of 1.5 miles at T22N, R5E, S29, 32.

FISCAL NOTE: No cost to Wood County. Total reimbursement from the State Aid Registration Fund, account #43572, and for the ATV Intensive Use Area, donated services by the Central Wisconsin ATV Riders Club, account #48503.

WHEREAS, Wood County will be responsible for the maintenance of the area known as the Wood County ATV Intensive Use Area, as well as the 5.1 miles of County Forest land, ATV trails named East Hazelnut & Kimball Connector, 4.0 miles of Hay Creek-Peterson Road Connector, 1.5 miles of Range Road Connector, and

WHEREAS, there is a demand to continue the maintenance of these areas within Wood County, and

WHEREAS, the Central Wisconsin ATV Riders (an incorporated club) is willing to participate in maintenance of the Wood County Intensive Use Area, and

WHEREAS, the existing areas in the Townships conform to trail standards established in Chapter NR64, Administrative Code, and

WHEREAS, \$23,526 is the estimated cost to maintain these areas (\$12,926 Intensive Use Area + \$5,100 East Hazelnut & Kimball Connector + \$4,000 Hay Creek-Peterson Road Connector+ \$1,500 Range Road Connector) in State Aid, and

Adopted by the County Board of Wood County, February 17, 2026

County Clerk

County Board Chairman

WHEREAS, to become eligible for the ATV trail maintenance, the areas listed above must remain a County area.

NOW THEREFORE BE IT RESOLVED by the Wood County Board of Supervisors, that Wood County Parks & Forestry Department will maintain the existing 10 miles of Wood County ATV Intensive Use Area and 10.6 miles of County Forest all-terrain vehicle trails, (pending reimbursement from the State ATV registration fund) for the enjoyment of the citizenry of Wood County and the State of Wisconsin.

AND BE IT FURTHER RESOLVED, that the Wood County Parks & Forestry Department be authorized to sign necessary maintenance agreements for the existing Wood County ATV Intensive Use Area and 10.6 miles of County Forest Land, ATV trails name East Hazelnut & Kimball Connector, and Hay Creek-Peterson Road Connector.



RESOLUTION#

DATE February 17, 2026

Effective
Date

Upon passage & posting

Page 1 of 1

Introduced by Highway Infrastructure & Recreation Committee

Motion:	Adopted:	<input type="checkbox"/>
1 st	Lost:	<input type="checkbox"/>
2 nd	Tabled:	<input type="checkbox"/>
No: _____	Yes: _____	Absent: _____
Number of votes required:		
<input checked="" type="checkbox"/> Majority	<input type="checkbox"/> Two-thirds	
Reviewed by: _____	NF	, Corp Counsel
Reviewed by: _____	PY	, Finance Dir.

INTENT & SYNOPSIS: To become eligible for snowmobile trail maintenance monies on the existing trail on County and private lands for the 2026-2027 snowmobile year.

FISCAL NOTE: No cost to Wood County. Total reimbursement from the State Snowmobile Trail Aid account #43574.

WHEREAS, Wood County will be responsible for the maintenance of 297.3 miles of previously constructed snowmobile trails in the the Towns of Arpin, Auburndale, Cameron, Cary, Cranmoor, Dexter, Grand Rapids, Hansen, Hiles, Lincoln, Marshfield, Milladore, Port Edwards, Remington, Richfield, Rock, Rudolph, Saratoga, Seneca, Sherry, Siegel, and Wood, and

WHEREAS, there is a demand to continue the maintenance of these existing trails, and

WHEREAS, these existing trails conform to the Comprehensive Snowmobile Trail Plan, and

WHEREAS, easements for these trails, which cross private lands have been received, and

WHEREAS, funds in the amount of \$89,190 (297.3 miles of trails at \$300 per mile) have been budgeted to maintain these trails by Wood County, with reimbursement from the State Snowmobile Aids Funds, and

WHEREAS, to become eligible for snowmobile trail maintenance aid the trails listed above must remain County trails.

NOW THEREFORE BE IT RESOLVED by the Wood County Board of Supervisors, that Wood County maintains existing trails on County and private lands for the 2026-2027 season (pending reimbursement from the Snowmobile State Aid Program) for the enjoyment of the citizenry of Wood County and hereby authorize Wood County Parks and Forestry Department to act on behalf of Wood County to sign necessary maintenance agreements.

Adopted by the County Board of Wood County, February 17, 2026

County Clerk

County Board Chairman

**WOOD COUNTY, PARKS & FORESTRY - FOREST ADMINISTRATOR
REVENUE REPORT & TIMBER SALE BALANCES**

2025 End of Year

Budget Year 2025

			CONTRACT AWARD AMOUNT	CONTRACT AWARD DATE	CONTRACT EXPIRATION DATE	\$ RECEIVED CURRENT MONTH	AMOUNT BILLED TO DATE	AMOUNT RCVD TO DATE	BALANCE
CONTRACT	TRACT	CONTRACTOR							
780	2-16	MIDWEST HW	\$42,886.00	7/10/2020	7/31/2026		\$31,778.92	\$31,778.92	\$0.00
790	4-21	SCHREINER	\$15,600.00	11/24/2021	12/31/2026	\$1,476.64	\$1,476.64	\$1,476.64	\$0.00
797	3-22	SCHREINER	\$30,770.00	5/27/2022	6/30/2026		\$0.00	\$0.00	\$0.00
800	6-22	SCHREINER	\$16,440.00	5/27/2022	7/31/2026		\$0.00	\$0.00	\$0.00
801	7-22	WILSON	\$11,750.00	8/4/2022	7/31/2026		\$0.00	\$0.00	\$0.00
803	9-22	KOERNER	\$21,057.80	11/16/2022	12/31/2025	\$18,499.24	\$32,736.96	\$32,736.96	\$0.00
804	10-22	KOERNER	\$84,093.60	11/16/2022	12/31/2026		\$103,155.10	\$103,155.10	\$0.00
807	13-22	FLINK	\$9,450.00	12/31/2022	12/31/2026		\$2,274.03	\$2,274.03	\$0.00
812	4-23	FLINK	\$11,813.85	6/1/2023	6/30/2026		\$7,418.12	\$7,418.12	\$0.00
814	6-23	FLINK	\$21,055.00	4/28/2025	3/31/2028		\$0.00	\$0.00	\$0.00
816	8-23	KOERNER	\$31,625.00	1/4/2024	12/31/2025	-\$5,430.26	\$35,819.62	\$35,819.62	\$0.00
817	9-23	KOERNER	\$17,310.00	1/4/2024	12/31/2026		\$0.00	\$0.00	\$0.00
818	10-23	MIDWEST HW	\$51,768.30	1/4/2024	12/31/2026		\$0.00	\$0.00	\$0.00
819	11-23	TNT Timber	\$124,257.30	4/30/2024	5/1/2026	\$12,093.06	\$12,093.06	\$12,093.06	\$0.00
821	1-24	KOERNER	\$26,270.00	4/30/2024	5/1/2026	\$9,859.25	\$9,859.25	\$9,859.25	\$0.00
824	5-24	KOERNER	\$53,280.00	4/30/2024	5/1/2026		\$0.00	\$0.00	\$0.00
826	6-24	BIEWER	\$158,818.20	12/19/2024	12/31/2026	\$88,410.49	\$161,446.20	\$161,446.20	\$0.00
827	7-24	MEDDA	\$60,286.80	12/19/2024	12/31/2026	\$11,413.53	\$11,413.53	\$11,413.53	\$0.00
828	8-24	MIDWEST HW	\$75,328.40	12/19/2024	12/31/2026	\$10,052.48	\$26,670.92	\$10,052.48	-\$16,618.44
832	2-25	KOERNER	\$19,840.00	6/18/2025	6/30/2027		\$0.00	\$0.00	\$0.00
833	3-25	KOERNER	\$7,740.00	6/18/2025	6/30/2027		\$0.00	\$0.00	\$0.00
834	4-25	WEEKLY	\$36,980.00	6/18/2025	6/30/2027		\$0.00	\$0.00	\$0.00
835	7-25	FLINK	\$10,350.00	7/7/2025	6/30/2027	\$3,590.46	\$13,122.62	\$13,122.62	\$0.00
836	9-24	WEEKLY	\$34,063.30	6/18/2025	6/30/2027		\$0.00	\$0.00	\$0.00
837	1-25	WEEKLY	\$18,809.44	12/11/2025	12/31/2029		\$0.00	\$0.00	\$0.00
838	8-25	MATTICKS	\$10,890.00	12/11/2025	12/31/2027		\$0.00	\$0.00	\$0.00
839	9-25	KOERNER	\$9,810.00	12/11/2025	12/31/2027		\$0.00	\$0.00	\$0.00
840	14-25	KOERNER	\$57,865.00	12/11/2025	12/31/2027		\$0.00	\$0.00	\$0.00
755		FIREWOOD				\$30.00	\$174.66	\$174.66	
Total Active Contract Value			\$1,070,207.99	Payments Received This Month:			\$149,994.89		
						\$ RECEIVED CURRENT MONTH			
2025 Budgeted Total Revenues						\$400,000	Jobs Finished		
2025 Total County Forestry Revenues this month (90%)						\$134,995.40	Jobs Started		
2025 Total Township Revenues this month (10%):						\$14,999.49	Jobs Continuing/Reactivated		
							Jobs Gone Inactive		
2025 TOTAL NET FORESTRY REVENUE TO DATE:						\$458,136.61			

WOOD COUNTY PARKS & FORESTRY DEPARTMENT

REVENUE SUMMARY 2025

2025 Year End

BUDGETED REVENUES 2025	SOURCE	YTD REVENUE 2025	YTD REVENUE 2024	DEC REV 2025	DEC REV 2024	ACTUAL REV 2024
\$ 612,000.00	Camping Reservations	\$615,822.96	\$ 559,084.56	\$8,610.81	\$ 11,801.34	\$ 559,084.56
\$ 55,000.00	Campground Firewood Sales	\$45,415.87	\$ 47,775.73	\$79.62	\$ 63.51	\$ 47,775.73
\$ 3,900.00	Non-Camper Dump Station	\$2,287.78	\$ 2,905.41	\$18.96	\$ 37.91	\$ 2,905.41
\$ 400.00	Camper Storage	\$41.74	\$ 99.87	\$0.00	\$ -	\$ 99.87
\$ 900.00	Washer/Dryer/Showers	\$772.03	\$ 802.85	\$0.00	\$ 3.79	\$ 802.85
\$ 59,000.00	Shelters Enclosed	\$62,509.69	\$ 62,254.51	\$6,495.48	\$ 4,989.89	\$ 62,254.51
\$ 13,000.00	Shelters - Open	\$14,075.70	\$ 12,862.13	\$388.85	\$ 547.78	\$ 12,862.13
\$ 3,000.00	General Park User Fees (Use of open areas within parks)	\$1,260.66	\$ 450.24	\$151.66	\$ -	\$ 450.24
\$ 38,000.00	Powers Bluff Winter Recreation Tickets, Parties, Rentals & Concessions	\$38,148.71	\$ 1,824.33	\$24,161.70	\$ -	\$ 1,824.33
\$ 5,000.00	Trail Passes (Ski/Snowshoe/Multi-Use)	\$4,797.66	\$ 4,936.78	\$1,333.10	\$ 309.04	\$ 4,936.78
\$ 8,500.00	Disc Golf	\$3,984.96	\$ 4,677.66	\$22.90	\$ 27.53	\$ 4,677.66
\$ 25,000.00	Boat Launch	\$22,394.03	\$ 24,755.49	\$0.00	\$ -	\$ 24,755.49
\$ 17,500.00	Miscellaneous	\$6,217.70	\$ 19,360.22	\$41.54	\$ 9,462.45	\$ 19,360.22
\$ 8,800.00	Gift Certificates	\$9,828.00	\$ 9,035.75	\$9,744.79	\$ 8,680.46	\$ 9,035.75
\$ 850,000.00		\$827,557.49	\$ 750,825.53	\$51,049.41	\$35,923.70	\$ 750,825.53
\$ 400,000.00	46813 - Timber Sales & Wood Cutting (90%/County & 10%/Townships)	\$459,136.61	\$ 377,740.88	\$134,995.40	\$ 69,606.04	\$ 377,740.88
	Monthly totals = NET Revenue					
\$ 1,250,000.00		\$1,286,694.10	\$1,128,566.41	\$186,044.81	\$105,529.74	\$1,128,566.41

**WOOD COUNTY, PARKS & FORESTRY - FOREST ADMINISTRATOR
REVENUE REPORT & TIMBER SALE BALANCES**

January Revenue - February HIRC

Budget Year 2026

CONTRACT	TRACT	CONTRACTOR	CONTRACT AWARD AMOUNT	CONTRACT AWARD DATE	CONTRACT EXPIRATION DATE	\$ RECEIVED CURRENT MONTH	AMOUNT BILLED TO DATE	AMOUNT RCVD TO DATE	BALANCE
780	2-16	MIDWEST HW	\$42,886.00	7/10/2020	7/31/2026		\$31,778.92	\$31,778.92	\$0.00
790	4-21	SCHREINER	\$15,600.00	11/24/2021	12/31/2026		\$13,677.28	\$1,476.64	-\$12,200.64
797	3-22	SCHREINER	\$30,770.00	5/27/2022	6/30/2026		\$4,212.00	\$0.00	-\$4,212.00
800	6-22	SCHREINER	\$16,440.00	5/27/2022	7/31/2026		\$1,751.57	\$0.00	-\$1,751.57
801	7-22	WILSON	\$11,750.00	8/4/2022	7/31/2026		\$0.00	\$0.00	\$0.00
803	9-22	KOERNER	\$21,057.80	11/16/2022	12/31/2025	\$1,566.76	\$34,866.88	\$34,303.72	-\$563.16
804	10-22	KOERNER	\$84,093.60	11/16/2022	12/31/2026		\$103,155.10	\$103,155.10	\$0.00
807	13-22	FLINK	\$9,450.00	12/31/2022	12/31/2026		\$2,274.03	\$2,274.03	\$0.00
812	4-23	FLINK	\$11,813.85	6/1/2023	6/30/2026		\$7,987.78	\$7,418.12	-\$569.66
814	6-23	FLINK	\$21,055.00	4/28/2025	3/31/2028		\$0.00	\$0.00	\$0.00
817	9-23	KOERNER	\$17,310.00	1/4/2024	12/31/2026		\$2,525.22	\$2,525.22	\$0.00
818	10-23	MIDWEST HW	\$51,768.30	1/4/2024	12/31/2026		\$0.00	\$0.00	\$0.00
819	11-23	TNT Timber	\$124,257.30	4/30/2024	5/1/2026		\$151,017.10	\$85,988.93	-\$65,028.17
821	1-24	KOERNER	\$26,270.00	4/30/2024	5/1/2026	\$11,712.34	\$22,608.29	\$21,571.59	-\$1,036.70
824	5-24	KOERNER	\$53,280.00	4/30/2024	5/1/2026		\$0.00	\$0.00	\$0.00
826	6-24	BIEWER	\$158,818.20	12/19/2024	12/31/2026	\$73,895.87	\$161,446.20	\$161,446.20	\$0.00
827	7-24	MEDDA	\$60,286.80	12/19/2024	12/31/2026		\$45,310.79	\$11,413.53	-\$33,897.26
828	8-24	MIDWEST HW	\$75,328.40	12/19/2024	12/31/2026	\$26,670.92	\$68,019.11	\$36,723.40	-\$31,295.71
832	2-25	KOERNER	\$19,840.00	6/18/2025	6/30/2027		\$0.00	\$0.00	\$0.00
833	3-25	KOERNER	\$7,740.00	6/18/2025	6/30/2027		\$0.00	\$0.00	\$0.00
834	4-25	WEEKLY	\$36,980.00	6/18/2025	6/30/2027		\$0.00	\$0.00	\$0.00
835	7-25	FLINK	\$10,350.00	7/7/2025	6/30/2027		\$13,275.92	\$13,122.62	-\$153.30
836	9-24	WEEKLY	\$34,063.30	6/18/2025	6/30/2027		\$0.00	\$0.00	\$0.00
837	1-25	WEEKLY	\$18,809.44	12/11/2025	12/31/2029		\$0.00	\$0.00	\$0.00
838	8-25	MATTICKS	\$10,890.00	12/11/2025	12/31/2027		\$0.00	\$0.00	\$0.00
839	9-25	KOERNER	\$9,810.00	12/11/2025	12/31/2027		\$0.00	\$0.00	\$0.00
840	14-25	KOERNER	\$57,865.00	12/11/2025	12/31/2027		\$0.00	\$0.00	\$0.00
755		FIREWOOD					\$0.00	\$0.00	
Total Active Contract Value			\$1,038,582.99						
						Payments Received This Month:	\$113,845.89		
						\$ RECEIVED CURRENT MONTH			
2026 Budgeted Total Revenues						\$400,000	Jobs Finished		
2026 Total County Forestry Revenues this month (90%)						\$102,461.30	Jobs Started		
2026 Total Township Revenues this month (10%):						\$11,384.59	Jobs Continuing/Reactivated		
							Jobs Gone Inactive		
2026 TOTAL NET FORESTRY REVENUE TO DATE:						\$102,461.30			

**WOOD COUNTY PARKS & FORESTRY DEPARTMENT
REVENUE SUMMARY 2026**

January Revenue - February HIRC

BUDGETED REVENUES 2026	SOURCE	YTD REVENUE 2026	YTD REVENUE 2025	JAN 2026	JAN REV 2025	ACTUAL REV 2025
\$ 656,000.00	Camping Reservations	\$27,253.02	\$ 25,181.67	\$27,253.02	\$ 25,181.67	\$ 615,822.96
\$ 55,000.00	Campground Firewood Sales	\$0.00	\$ -	\$0.00	\$ -	\$ 38,413.07
\$ 4,000.00	Non-Camper Dump Station	\$0.00	\$ -	\$0.00	\$ -	\$ 2,287.78
\$ 500.00	Camper Storage	\$0.00	\$ -	\$0.00	\$ -	\$ 41.74
\$ 1,000.00	Washer/Dryer/Showers	\$0.00	\$ -	\$0.00	\$ -	\$ 772.03
\$ 75,000.00	Shelters Enclosed	\$5,283.41	\$ 3,838.39	\$5,283.41	\$ 3,838.39	\$ 62,509.69
\$ 25,000.00	Shelters - Open	\$640.97	\$ 1,089.88	\$640.97	\$ 1,089.88	\$ 14,075.70
\$ 3,000.00	General Park User Fees (Use of open areas within parks)	\$0.00	\$ -	\$0.00	\$ -	\$ 1,260.66
\$ 45,000.00	Powers Bluff Winter Recreation	\$461.50	\$ -	\$461.50	\$ -	\$ 38,148.71
\$ 5,000.00	Trail Passes (Ski/Snowshoe/Multi-Use)	\$709.41	\$ 60.65	\$709.41	\$ 60.65	\$ 4,797.66
\$ 5,000.00	Disc Golf	\$0.00	\$ 10.99	\$0.00	\$ 10.99	\$ 3,984.96
\$ 30,500.00	Boat Launch	\$0.00	\$ -	\$0.00	\$ -	\$ 22,394.03
\$ 10,000.00	Gift Certificates	\$0.00	\$ -	\$0.00	\$ -	\$ 9,828.00
\$ 10,000.00	Miscellaneous	\$0.00	\$ -	\$0.00	\$ -	\$ 6,217.70
\$ 925,000.00		\$34,348.31	\$ 30,181.58	\$34,348.31	\$30,181.58	\$ 820,554.69
\$ 400,000.00	46813 - Timber Sales & Wood Cutting (90%/County & 10%/Townships) Monthly totals = NET Revenue	\$102,461.30	\$ 18,247.59	\$102,461.30	\$ 18,247.59	\$ 459,136.61
\$ 1,325,000.00		\$136,809.61	\$48,429.17	\$136,809.61	\$48,429.17	\$1,279,691.30

Committee Report

County of Wood

Report of claims for: Parks & Forestry

For the period of: December 25 (February HIRC)

For the range of vouchers: 21251218 - 21251299

Voucher	Vendor Name	Nature of Claim	Doc Date	Amount	Paid
21251218	ACE HARDWARE	SP Shop Supplies	12/01/2025	\$45.73	P
21251219	ACE HARDWARE	Keys - admin	12/01/2025	\$53.93	P
21251220	ACE HARDWARE	SP Shop Supplies	12/08/2025	\$84.93	P
21251221	ACE HARDWARE	SP Shop Supplies	12/11/2025	\$41.97	P
21251222	ACE HARDWARE	SP Shop Supplies	12/12/2025	\$33.17	P
21251223	ALLIANT ENERGY/ WP&L	Electric Serv PB Trailhead sh	12/31/2025	\$30.16	P
21251224	BUDS CORNER MART	Gas for Vehicles & Equip SP	12/31/2025	\$530.99	P
21251225	ADVANCE AUTO PARTS / CARQUEST (Mfld)	DP Gen Supplies	12/04/2025	\$7.94	P
21251226	ADVANCE AUTO PARTS / CARQUEST (Mfld)	SP Vehicle Maint	12/15/2025	\$50.67	P
21251227	ADVANCE AUTO PARTS / CARQUEST (Mfld)	Forestry Vehicle Maint	12/19/2025	\$53.48	P
21251228	ADVANCE AUTO PARTS / CARQUEST (Mfld)	SP Shop Supplies	12/18/2025	\$27.28	P
21251229	EAGLE CONSTRUCTION CO INC	Powers Bluff Welcome Center	12/30/2025	\$40,090.00	P
21251230	FRIENDS AND NEIGHBORS COUNTRY STORE INC	Diesel #555	11/05/2025	\$127.32	P
21251231	FRIENDS AND NEIGHBORS COUNTRY STORE INC	Diesel #777	11/07/2025	\$132.33	P
21251232	FRIENDS AND NEIGHBORS COUNTRY STORE INC	#528 starting fuel	11/10/2025	\$7.06	P
21251233	FRIENDS AND NEIGHBORS COUNTRY STORE INC	Diesel #777	11/17/2025	\$131.36	P
21251234	FRIENDS AND NEIGHBORS COUNTRY STORE INC	Unleaded #751	11/25/2025	\$117.98	P
21251235	HAAS BUILDERS SUPPLY INC	SP Shop Supplies	12/15/2025	\$15.60	P
21251236	INSIGHT FS	LP Dexter Shop	12/09/2025	\$263.57	P
21251237	INSIGHT FS	LP Nepco	12/20/2025	\$432.01	P
21251238	INSIGHT FS	LP NP Shop	12/11/2025	\$858.29	P
21251239	INSIGHT FS	LP PB Stone Shelter	12/11/2025	\$45.75	P
21251240	INSIGHT FS	LP PB Welcome Center	12/16/2025	\$1,119.20	P
21251241	INSIGHT FS	PB Welcome Center LP Hook Up	12/17/2025	\$220.00	P
21251242	INSIGHT FS	Diesel NP	12/22/2025	\$360.10	P
21251243	INSIGHT FS	Diesel NP	12/22/2025	\$260.17	P
21251244	INSIGHT FS	Unleaded NP	12/22/2025	\$718.96	P
21251245	LAKESIDE OASIS LLC	Gas & Diesel Dexter & Forestry	12/31/2025	\$753.58	P
21251246	OAKDALE ELECTRIC CO	Electric Serv DP Dam	01/02/2026	\$132.95	P
21251247	OAKDALE ELECTRIC CO	Electric Serv DP Loop 3 Vault	01/02/2026	\$56.36	P
21251248	OAKDALE ELECTRIC CO	Electric Serv DP Shelter Area	01/02/2026	\$52.51	P
21251249	OAKDALE ELECTRIC CO	Electric Serv DP Loop 2 Shower	01/02/2026	\$50.95	P
21251250	OAKDALE ELECTRIC CO	Electric Serv DP Smitty Storag	01/02/2026	\$50.47	P
21251251	OAKDALE ELECTRIC CO	Electric Serv DP Group Sites	01/02/2026	\$49.81	P

Committee Report - County of Wood

Parks & Forestry - December 25 (February HIRC)

21251218 - 21251299

21251252	OAKDALE ELECTRIC CO	Electric Serv DP Host FHU	01/02/2026	\$43.32	P
21251253	OAKDALE ELECTRIC CO	Electric Serv DP Loop 1 sites	01/02/2026	\$42.47	P
21251254	OAKDALE ELECTRIC CO	Electric Serv DP Cabin	01/02/2026	\$178.77	P
21251255	OAKDALE ELECTRIC CO	Electric Serv DP Loop 3 Sites	01/02/2026	\$42.47	P
21251256	OAKDALE ELECTRIC CO	Electric Serv DP Shop	01/02/2026	\$302.01	P
21251257	QUALITY PLUS PRINTING INC	2026 Brochure	12/19/2025	\$2,300.00	P
21251258	SOUTHINGTON TOOL & MFG CORP	PB Ski Tag Hangers	12/18/2025	\$290.80	P
21251259	TOM'S PAINT & DECORATING	Dexter Beach House Paint T&G	12/20/2025	\$517.92	P
21251260	WATER WORKS & LIGHTING COMM	Electric Serv SP Storm Shelter	12/29/2025	\$208.36	P
21251261	WATER WORKS & LIGHTING COMM	Electric Serv SP Ranger/Host	12/29/2025	\$182.89	P
21251262	WATER WORKS & LIGHTING COMM	Electric Serv SP 2nd Loop Camp	12/29/2025	\$12.88	P
21251263	WATER WORKS & LIGHTING COMM	Electric Serv SP 1st Loop Camp	12/29/2025	\$12.88	P
21251264	WATER WORKS & LIGHTING COMM	Electric Serv SP 3rd loop camp	12/29/2025	\$23.98	P
21251265	WATER WORKS & LIGHTING COMM	Electric Serv SP Shop	12/29/2025	\$142.58	P
21251266	WATER WORKS & LIGHTING COMM	Electric Serv SP Showers	12/29/2025	\$14.12	P
21251267	WATER WORKS & LIGHTING COMM	Electric Serv SP WSBP	12/29/2025	\$55.17	P
21251268	WATER WORKS & LIGHTING COMM	Electric Serv SP Dam	12/29/2025	\$159.30	P
21251269	WATER WORKS & LIGHTING COMM	Electric Serv SP Stone	12/29/2025	\$38.01	P
21251270	WATER WORKS & LIGHTING COMM	Electric Serv RSBP	12/29/2025	\$36.20	P
21251271	WATER WORKS & LIGHTING COMM	Electric Serv SP L2 H Panel	12/29/2025	\$12.88	P
21251272	ALLIANT ENERGY/ WP&L	Electric Serv PB Old Park	01/06/2026	\$235.21	P
21251273	ALLIANT ENERGY/ WP&L	Electric Serv Nepco	01/06/2026	\$414.61	P
21251274	ALLIANT ENERGY/ WP&L	Electric Serv ATV IUA	01/06/2026	\$142.32	P
21251275	ALLIANT ENERGY/ WP&L	Electric Serv NP Suspension Br	01/06/2026	\$21.45	P
21251276	ALLIANT ENERGY/ WP&L	Electric Serv NP Riverside Cam	01/06/2026	\$20.36	P
21251277	ALLIANT ENERGY/ WP&L	Electric Serv Np Ranger/Host	01/06/2026	\$190.39	P
21251278	ALLIANT ENERGY/ WP&L	Electric Serv NP Shelter Area	01/06/2026	\$20.80	P
21251279	ALLIANT ENERGY/ WP&L	Electric Serv NP Shop	01/06/2026	\$152.21	P
21251280	ALLIANT ENERGY/ WP&L	Electric Serv NP Lower Shower	01/06/2026	\$20.36	P
21251281	ALLIANT ENERGY/ WP&L	Electric Serv NP New Shower	01/06/2026	\$20.36	P
21251282	ALLIED COOPERATIVE	Diesel #609	12/01/2025	\$289.59	P
21251283	ALLIED COOPERATIVE	Diesel #609	12/11/2025	\$340.80	P
21251284	ALLIED COOPERATIVE	PB Supplies	12/26/2025	\$12.63	P
21251285	ALLIED COOPERATIVE	Diesel #609	12/29/2025	\$344.86	P
21251286	BRICKL BROS INC	Powers Bluff Welcome Center	12/31/2025	\$9,456.59	P
21251287	FRIENDS AND NEIGHBORS COUNTRY STORE INC	Fuel #582	12/31/2025	\$175.86	P
21251288	HOME DEPOT CREDIT SERVICES	December Park Supplies	01/05/2026	\$516.67	P
21251289	PITTSVILLE FARM & HOME CENTER	DP Maint Supplies	12/03/2025	\$25.64	P
21251290	PITTSVILLE FARM & HOME CENTER	DP Maint Supplies	12/04/2025	\$25.99	P
21251291	PITTSVILLE FARM & HOME CENTER	DP Maint Supplies	12/09/2025	\$36.98	P
21251292	PITTSVILLE FARM & HOME CENTER	PB Maint Supplies	12/22/2025	\$9.18	P
21251293	POWER PAC INC	PB Trail Maint. Equip	11/20/2025	\$593.99	P
21251294	REIGEL PLUMBING & HEATING INC	PB building Maint	12/23/2025	\$18.99	P
21251295	WE ENERGIES	Gas Service for SP Shop	01/02/2026	\$179.29	P
21251296	WE ENERGIES	Gas Service SP Campground	01/02/2026	\$11.55	P

Committee Report - County of Wood

Parks & Forestry - December 25 (February
HIRC)

21251218 - 21251299

21251297	WE ENERGIES	Natural Gas Storm Shelter	01/02/2026	\$257.66	P
21251298	ALLIANT ENERGY/ WP&L	Electric Serv NP Hawth Hill	01/06/2026	\$21.45	P
21251299	US BANK	Empolyee Meeting Luncheon	12/17/2025	\$16.50	
Grand Total:				\$65,195.88	

Signatures

Committee Chair:

Committee Member:

Committee Member:

Committee Member:

Committee Member:

Committee Member:

Committee Member:

Committee Member:

Committee Member:

Committee Report

County of Wood

Report of claims for: Parks & Forestry

For the period of: January 2026 (February HIRC)

For the range of vouchers: 21260001 - 21260030

Voucher	Vendor Name	Nature of Claim	Doc Date	Amount	Paid
21260001	ARC CENTRAL INC	DP Beach House	01/05/2026	\$8,775.00	P
21260002	SOLARUS	Internet Serv Storm/Cera	01/16/2026	\$84.94	P
21260003	TOWN OF RUDOLPH	2025 Property Tax Cera Park	12/31/2025	\$3,894.09	P
21260004	WPRA	2026 Membership - Vollert	11/01/2025	\$150.00	P
21260005	WPRA	2026 Membership Kleifgen	11/01/2025	\$150.00	P
21260006	WPRA	2026 Membership - Schooley	11/01/2025	\$150.00	P
21260007	WPRA	Schooley - 2026 Annual Conf	01/06/2026	\$300.00	P
21260008	CENTRAL WISCONSIN EXPLORER	AD for 2026 1st Q 1/3 page	12/25/2025	\$555.00	P
21260009	EARTH INC	Aub Nite Owl Snow Bridge	01/13/2026	\$8,792.94	P
21260010	GRIFFITH STATE NURSERY	2026 trees for parks	01/14/2026	\$463.00	P
21260011	RENT-A-FLASH INC	Snowmobile No Park Sign	01/09/2026	\$35.75	P
21260012	WASTE MANAGEMENT	montly garbage/recycle pick up	01/06/2026	\$1,420.67	P
21260013	ALLIANT ENERGY/ WP&L	Electric Serv Cera Park	01/15/2026	\$310.94	P
21260014	AMAZON CAPITAL SERVICES	Diesel Cans	01/16/2026	\$199.79	P
21260015	LASEE JOELLE	Trail Pass Refund - overpaid	01/21/2026	\$20.00	P
21260016	QUALITY DOOR & HARDWARE LLC	PB Shop Locks	01/14/2026	\$579.68	P
21260017	QUALITY DOOR & HARDWARE LLC	NP Building Repair	01/14/2026	\$20.00	P
21260018	TOWN OF CARY	County Forest Township Payment	01/22/2026	\$948.15	P
21260019	TOWN OF CRANMOOR	County Forest Township Payment	01/22/2026	\$4,857.10	P
21260020	TOWN OF DEXTER	County Forest Township Payment	01/22/2026	\$10,629.17	P
21260021	TOWN OF HILES	County Forest Township Payment	01/22/2026	\$12,625.08	P
21260022	TOWN OF PORT EDWARDS	County Forest Township Payment	01/22/2026	\$7,556.16	P
21260023	TOWN OF REMINGTON	County Forest Township Payment	01/22/2026	\$8,878.73	P
21260024	TOWN OF RICHFIELD	County Forest Township Payment	01/22/2026	\$482.86	P
21260025	TOWN OF SENECA	County Forest Township Payment	01/22/2026	\$5,040.04	P
21260026	TRAIL EYES LLC	Powers Bluff Trail Assessment	01/21/2026	\$560.00	P
21260027	TRUXCESSORIZE INC	SP Plow Parts	01/06/2026	\$60.00	P
21260028	US BANK	PB Tow Line Inspection	01/19/2026	\$429.45	
21260029	WE ENERGIES	Natual Gas PB Shop	01/14/2026	\$408.83	P
21260030	WEICHELTRUCKING & EXCAVATING	Road Base Range Rd Con ATV	01/15/2026	\$28,658.92	P
Grand Total:				\$107,036.29	

Signatures

Committee Chair:

Committee Member:

Committee Member:

Committee Member:

Committee Member:

Committee Member:

Committee Member:

Committee Member:

Committee Member:
