

AGENDA
HIGHWAY, INFRASTRUCTURE & RECREATION COMMITTEE

DATE: Thursday, November 7, 2024
TIME: 9:00 AM
PLACE: Highway Office – Conference Room

1. Call meeting to order
2. Declaration of quorum
3. Public comments
4. Correspondence
5. Approve minutes from previous committee meetings
6. ATV Trail/Route system update
 - a. Route Updates
- 7. HIGHWAY**
 - a. Highway staff reports
 - b. Highway revenue report
 - c. Highway vouchers
 - d. CTH BB/USH 10 Intersection Realignment
 - e. CTH AA Preliminary Engineering
 - f. CTH A Preliminary Engineering
- 8. PARKS AND FORESTRY**
 - a. Parks & Forestry staff reports
 - b. Special Use permits
 - c. Ash Tree treatments at Powers Bluff
 - d. CERA Park Lease and MOU
 - e. ARPA funding request
 - f. Request to clean ditches on Wood County Forest – Cranberry Creek Cranberries Inc.
 - g. WCWAAC Minutes
 - h. 2025 Budget
 - i. Parks and Forestry revenue reports
 - j. Parks & Forestry vouchers
9. Attendance at Meetings
10. Future Agenda Items
 - a. Department Head Evaluation Timeline
11. Set next regular meeting date: Thursday, December 5, 2024 at 9:00 AM
12. Adjournment

Join by phone

+1-408-418-9388 United States Toll
Meeting number (access code): 2497 229 5364

Join by WebEx App or Web

<https://woodcountywi.webex.com/woodcountywi/j.php?MTID=md7076ffee73b50ce10173c0392d97a76>
Meeting number (access code): 2497 229 5364
Meeting password: 110724

MINUTES
HIGHWAY, INFRASTRUCTURE & RECREATION COMMITTEE

DATE: Thursday, October 3, 2024
TIME: 8:00 AM
PLACE: Highway Dept., Conference Room

MEMBERS PRESENT: Jake Hahn, Al Breu (WebEx), Scott Brehm, John Hokamp

MEMBER EXCUSED: Lee Thao

OTHERS PRESENT: Trent Miner, County Clerk, see attached sign-in sheet

1. Chairman Hahn called the meeting to order at 9:00 AM and declared a quorum present.
2. There was no public comment.
3. The minutes of the September 11 & 17, 2024, meetings were reviewed. Motion by Hokamp/Breu to accept the minutes as presented. Motion carried unanimously.
4. Representatives from SRF, and engineering firm, presented a PowerPoint on the possibility of adding a new, 3-loop campground within the existing footprint of South Park. They provided conceptual designs of how it could be laid out as well as the amenities that could be included. This could add an additional 77 sites to this property. Parks & Forestry Director Schooley highlighted possible funding sources, including the state's ATV Trail fund, as a number of these site would be geared towards that. Motion by Hahn/Hokamp to approve the initial master plan for the second campground at South Park. Motion carried unanimously.
5. Representatives from Consolidated Water & Power Co., addressed the committee on the future management of its CERA Park in the Town of Rudolph. Currently it is run by a board of directors and that lease expires at the end of the year. CWPCo would be interested in leasing the park to the county with the ultimate goal of being a full transfer of the park to the county. More information will be forthcoming. Motion by Brehm/Hokamp to direct staff to continue gathering information. Motion carried unanimously.
6. The Highway Dept. staff reports were highlighted and reviewed.
7. The Highway revenue report was reviewed.
8. Motion by Hokamp/Brehm to approve the Highway Dept. vouchers. Motion carried unanimously.
9. Adjustments have been made to Ordinance #400 – Speed Limits and for them to be enforceable, an ordinance revision needs to go before the county board. Hawk

presented the document for review. Motion by Brehm/Hokamp to approve the ordinance and forward to the county board for their consideration. Motion carried unanimously.

10. Hawk reported that the CTH BB/USH 10 realignment design is continuing with the landowners. The alignment should be finalized soon with construction starting yet this year but will not be completed until 2025.
11. Hawk discussed the current situation on CTH AA/Plank Hill. The contract for design will be upcoming. Hawk is looking at various funding sources to help fund the project. The goal is to start construction in late 2025, with completion in 2026.
12. The Parks & Forestry staff reports were reviewed. Schooley stated that the Discover Wisconsin show featuring Wood County is nearly finalized.
13. Parks & Forestry revenue reports were reviewed.
14. Motion by Hokamp/Breu to approve the Parks & Forestry vouchers. Motion carried unanimously.
15. The next meeting will be held on Thursday, November 7, 2024, at 9:00 AM at the Highway Department Conference Room.
16. Chairman Hahn declared the meeting adjourned at 10:21 AM.

Minutes taken by Trent Miner, County Clerk, and are in draft form until approved at the next meeting.

**Highway Infrastructure & Recreation Committee
October 3, 2024**

NAME	REPRESENTING
Bill Clelandening	WCB # 15
CHAD SCHOOLEN	PAF
DENNIS POLACH	WCB - 14
JEFF RUTKOWICZ	WCB # 11
Bill Magee	Public
Mark Anderson	CUPCo
MARY BURNHAM	WPCo
SEAN JERGENS	SRF
Phil JOHNSON	SRF
GAIL HUTCHISON	WDMK
Stacy Klippen	WCPdF
Don Colby	WCPdF
Fritz Schubert	WCF
Roland Hawk	WCHighway
Rachel Krause	Highway
Ed Newton (Web Ex)	Finance
Lance Pliml (Web Ex)	CB Chair
Ken? (Web Ex)	
Dennis? (Web Ex)	



Wood County

WISCONSIN

OFFICE OF
HIGHWAY COMMISSIONER

Roland Hawk
COMMISSIONER

October 31, 2024

To: Highway, Infrastructure & Recreation Committee

From: Roland Hawk, Highway Commissioner

Subject: Commissioner Report for November 7, 2024 HIRC meeting

Department Activities

Personnel/Administration

Loader operator position was filled in early October. Highway Department has no vacancies at this time.

Marshfield Brine building is under construction. Foundation and floor is complete.

Commissioner submitted General Liability Clarification letter October 1 to WDNR to acquire the parcel in the SW quadrant of CTH A and Richfield Drive. WDNR has 60 days to make a determination. This property has been abandoned by owners due to contaminated soil. Bank has contacted Commissioner to see if Highway would accept property for R/W purposes.

Commissioner has approved a contract with a consultant to complete engineering for a structure and roadway alignment for CTH AA over Lynn Creek in the Town of Port Edwards. Geotechnical and pavement cores have been completed, as well as wetland delineation, topographic survey. Preliminary correspondence with WDNR has been completed.

Highway/Facility Projects

2024 Engineering Projects

- WisDOT STP Project CTH F & HH Intersection **Construction 2026**
 - Design Engineering 90% Complete
 - R/W acquisition in progress.
- WisDOT STP Bridge CTH N (STH 186 – CTH N) **Construction 2025**
 - Design Engineering 100% Complete
- WisDOT STP Urban (BIL) CTH U Village of Biron **Construction 2026**
 - DNR, FERC, US ACOE coordination ongoing
 - R/W acquisition early 2025
 - Environmental Document & Design Study Report submitted.
 - Borrow site (pond) anticipated winter 2024-2025.
 - Coordination of box culvert extension, to be performed by Wood Co Hwy. in 2025
- CTH Z BIA funded 2024 pavement replacement **Construction 2024 completed**
- CTH BB Realignment Project

- Final alignment selected, R/W acquisition in progress.
- WDNR & USACE wetland documentation completed.
- Construction anticipated to begin *late 2024 or early 2025*.
- CTH K & P Intersection
 - Project complete and open to traffic August 2.
- Marshfield Brine Building
 - Contractor started early October
 - Anticipate completion late December
- CTH A Corridor Preliminary Engineering
 - Preliminary engineering underway
 - Haz Mat report
 - Crash analysis
 - Alignment
 - Profile
 - Cross-sections
 - Intersection analysis
 - Commissioner exploring funding options
 - Abandoned property with Haz Mat being reviewed for General Liability Risk.
- CTH AA Lynn Creek
 - Contract signed
 - Geotechnical/pavement cores complete
 - Wetland Delineation Complete
 - Topo Survey Complete
 - Initial WDNR Correspondence Complete

Highway Maintenance

Work in October included:

- Sign replacements,
- Beam guard repairs,
- Mowing/brush cutting
- Shoulder maintenance
- Ditching
- Culvert replacement
- Stump removal at Dexter Site
- Grading parking lot at WR facility

WCHA Events & Misc. Meetings since last HIRC meeting

Commissioner attended the following events/meetings:

- September 22 – 24 NACE BOD meeting Toronto, CN
- September 30, WCHA Conference Coordination Committee, Virtual
- October 1, Auburndale Elementary School Engineering Presentation
- October 3, HIRC
- October 3, CTH A Progress Meeting
- October 7, WCHA LOS Committee, Virtual
- October 8, WCHA Executive Committee Meeting, Waupaca County
- October 8 – 9, WCHA Fall Commissioner Training, Waupaca County
- October 10 Fall Safety Training/Open Enrollment WR Facility
- October 14 – 25 Commissioner Vacation
- October 28 WCHA BOD meeting, Virtual
- October 29 Panelist for TDA Round Table Mosinee Airport,

EQUIPMENT

The tandem Mack patrol truck purchased in 2022 is expected to be delivered for service in November. The single axel International patrol truck purchased in 2022 is anticipated to be delivered for service in spring 2025.

Roof Drains have been disconnected from sanitary sewer system and redirected to dump on to ground outside of building. This is generating significant water around the building. In spring 2026, additional grading or drains may need to be installed around the building.

Accounting Supervisor Report

By John Peckham, Wood County Highway Department Accounting Supervisor

HIRC Meeting

Revenues and Expenses

We have done a number of Road and Bridge Aid projects that bump up revenues as the invoices are approved and sent. Crews are continuing to work, as well, on some State Discretionary Maintenance projects. Revenues from all those projects will be booked as the projects are completed.

We have received the final GTA payment from the State.

County construction projects continue to wind down.

The Maintenance Fund is fairly low but should carry us to year-end. The Machinery Fund is in the red and may not recover by year-end. Snow Removal Fund is at about \$40,000 so it will likely be in the red by year-end as well. The Capital Projects fund was buoyed by October's influx of 2025 funding but that deposit is supposed to be for next year's projects.

Other

This month continues the educational series, Bookkeepers Corner, which I began a few months ago. The chapter this month is on the Transportation Cost Pool – Equipment Acquisition.

TRANSPORTATION COST POOLS – EQUIPMENT ACQUISITION

Per the Uniform Cost Accounting System manual, the Equipment Acquisition cost pool is “established to accumulate the costs for such items while preserving the integrity of the line items of expense and budgetary controls.” In other words, we use this transportation cost pool to gather all the costs for a new fixed asset before it is actually put “in service”. We “preserve the integrity” of line items by not showing individual expenses within the fixed asset accounts.

For example, when the Department purchases a plow truck, there are many components to the truck and they are purchased from, and assembled by, various vendors. We purchase the chassis from one vendor, who must be paid. Then, the chassis is sent to another vendor who installs the various plows, spreader, etc. Finally, there may be some work that our mechanics have to perform on the truck to finally make it road-ready, such as communications equipment. All those costs are put in the Equipment Acquisition pool and, when the truck is put in service, the total of those costs is debited to the fixed asset account.

The Equipment Acquisition cost pool is represented in Function 53281.

Debits to the pool – Purchases of fixed assets, additions to fixed assets not yet in service, and costs to make a fixed asset ready for its primary function.

Credits to the pool – When a fixed asset is put in service, the debit is to a specific asset account (Function 18000) with a credit to Function 53281 at the cost allocation line item, 980.

As a reminder, the cost pools encompass both expenses and revenues. Unlike most accounting systems, the revenues within the cost pools are accounted for under expense functions (50000 series of numbers in the third segment of the County’s account numbers). The revenue accounts within those expense functions are referred to as Cost Allocation accounts.

The result of this practice, when the Transportation Cost Pool is “over-recovering” its costs, and when a particular function’s expenses and cost allocations are combined, is a credit balance (number will show in parentheses on Revenue Report). When the Transportation Cost Pool is “under-recovering” its costs, the combined accounts will show a debit balance (the number will not be in parentheses on the Revenue Report).

County of Wood
 DETAILED INCOME STATEMENT W/SUBTOTALS
 Highway Departmentwide
 Thursday, October 31, 2024

		2024			
		Actual	Budget	Variance	Variance %
REVENUES					
Intergovernmental Revenues					
43300	Federal Grants-American Recovery & Reinvest Act	\$151,023.91		\$151,023.91	0.00%
43531	State Aid-Transportation	2,213,390.51	2,497,341.00	(283,950.49)	(11.37%)
43534	State Aid-LRIP	462,691.55	816,480.00	(353,788.45)	(43.33%)
	Total Intergovernmental	2,827,105.97	3,313,821.00	(486,715.03)	(14.69%)
Licenses and Permits					
44101	Utility Permits	23,172.16	29,200.00	(6,027.84)	(20.64%)
	Total Licenses and Permits	23,172.16	29,200.00	(6,027.84)	(20.64%)
Intergovernmental Charges for Services					
47230	State Charges	896,238.46	1,061,555.00	(165,316.54)	(15.57%)
47231	State Charges-Highway	179,245.94	307,190.00	(127,944.06)	(41.65%)
47232	State Charges-Machinery	25,671.03		25,671.03	0.00%
47300	Local Gov Chgs	456,142.31	525,383.00	(69,240.69)	(13.18%)
47330	Local Gov Chgs-Transp	1,245,192.46	1,130,895.00	114,297.46	10.11%
47332	Local Gov Chgs-Roads	87,936.41	424,793.00	(336,856.59)	(79.30%)
47333	Local Gov Chgs-Bridges	75,308.71	84,227.00	(8,918.29)	(10.59%)
	Total Charges to Other Governments	2,965,735.32	3,534,043.00	(568,307.68)	(16.08%)
Interdepartmental Charges for Services					
47470	Dept Charges-Highway	2,547,006.87	2,481,327.00	65,679.87	2.65%
	Total Interdepartmental Charges	2,547,006.87	2,481,327.00	65,679.87	2.65%
	Total Intergovernmental Charges for Services	5,512,742.19	6,015,370.00	(502,627.81)	(8.36%)
Miscellaneous					
48340	Gain/Loss-Sale of Salvage and Waste	10,217.80	6,700.00	3,517.80	52.50%
48520	Grants/Contribution-ATV Route Signage		20,000.00	(20,000.00)	(100.00%)
	Total Miscellaneous	10,217.80	26,700.00	(16,482.20)	(61.73%)
Other Financing Sources					
49110	Proceeds from Long-Term Debt	2,451,500.00	2,137,517.00	313,983.00	14.69%
49280	Transfer from Trust Funds	462,691.55		462,691.55	0.00%
	Total Other Financing Sources	2,914,191.55	2,137,517.00	776,674.55	36.34%
	TOTAL REVENUES	11,287,429.67	11,522,608.00	(235,178.33)	(2.04%)
EXPENDITURES					
Public Works-Highway					
53110	Hwy-Administration	468,211.66	413,359.51	(54,852.15)	(13.27%)
53120	Hwy-Engineer	185,116.05	271,100.38	85,984.33	31.72%
53191	Hwy-Other Administration	297,493.70	364,803.97	67,310.27	18.45%
53210	Hwy-Employee Taxes & Benefits	(612,902.42)	(0.01)	612,902.41	#####
53220	Hwy-Field Tools	(55,398.24)	(0.08)	55,398.16	#####
53230	Hwy-Shop Operations	277,530.35	331,761.59	54,231.24	16.35%
53232	Hwy-Fuel Handling	(19,144.55)	(23,105.00)	(3,960.45)	17.14%
53240	Hwy-Machinery Operations	(1,193,335.79)	(580,718.15)	612,617.64	(105.49%)
53250	Hwy-Crushing Operations	41,095.95	0.44	(41,095.51)	#####
53251	Hwy-Crushing Operations Production	100,572.90	(0.13)	(100,573.03)	#####
53260	Hwy-Bituminous Ops	114,188.50	234,143.57	119,955.07	51.23%
53266	Hwy-Bituminous Ops	1,608,141.10	1,957,351.50	349,210.40	17.84%
53270	Hwy-Buildings & Grounds	240,239.06	376,257.96	136,018.90	36.15%
53290	Hwy-Salt Brine Operations	18,640.08	(0.40)	(18,640.48)	4,660,120.00%
53291	Hwy-Salt Brine Operations	2,681.74	(0.40)	(2,682.14)	670,535.00%
53281	Hwy-Acquisition of Capital Assets	1,103,520.44		(1,103,520.44)	0.00%
53310	Hwy-Maintenance CTHS		23,742.92	23,742.92	100.00%
53311	Hwy-Maint CTHS Patrol Sectn	3,062,622.81	2,895,462.40	(167,160.41)	(5.77%)
53312	Hwy-Snow Remov	548,887.54	907,384.18	358,496.64	39.51%
53313	Hwy-Maintenance Gang	127,383.75	217,092.62	89,708.87	41.32%
53314	Hwy-Maint Gang-Materials	5,813.70	3,160.00	(2,653.70)	(83.98%)
53320	Hwy-Maint STHS	1,015,096.00	1,061,555.11	46,459.11	4.38%
53330	Hwy-Local Roads	1,245,719.04	1,130,894.59	(114,824.45)	(10.15%)
53340	Hwy-County-Aid Road Construction	481,201.96	478,363.75	(2,838.21)	(0.59%)
53341	Hwy-County-Aid Bridge Construction	161,421.60	134,227.18	(27,194.42)	(20.26%)
53490	Hwy-State & Local Other Services	533,259.45	525,383.46	(7,875.99)	(1.50%)
53491	Hwy-ATV Route Signage		40,000.01	40,000.01	100.00%
	Total Public Works-Highway	9,758,056.38	10,762,220.97	1,004,164.59	9.33%
	Capital Outlay				

County of Wood
 DETAILED INCOME STATEMENT W/SUBTOTALS
 Highway Departmentwide
 Thursday, October 31, 2024

		2024			
		Actual	Budget	Variance	Variance %
57310	Highway Capital Projects	3,285,177.15	2,246,682.03	(1,038,495.12)	(46.22%)
57930	Depreciation & Amortization	1,967.47		(1,967.47)	0.00%
	Total Capital Outlay	<u>3,287,144.62</u>	<u>2,246,682.03</u>	<u>(1,040,462.59)</u>	<u>(46.31%)</u>
	Other Financing Uses				
59210	Transfers to General Fund	462,691.55		(462,691.55)	0.00%
	Total Other Financing Uses	<u>462,691.55</u>		<u>(462,691.55)</u>	<u>0.00%</u>
	TOTAL EXPENDITURES	<u>13,507,892.55</u>	<u>13,008,903.00</u>	<u>(498,989.55)</u>	<u>(3.84%)</u>
	NET INCOME (LOSS) *	<u>(2,220,462.88)</u>	<u>(1,486,295.00)</u>	<u>(734,167.88)</u>	<u>49.40%</u>

Committee Report

County of Wood

Report of claims for: HIGHWAY

For the period of: SEPTEMBER

For the range of vouchers: 16242353 - 16242643

Voucher	Vendor Name	Nature of Claim	Doc Date	Amount	Paid
16242353	STAPLES ADVANTAGE	OFFICE SUPPLIES	08/16/2024	\$297.45	P
16242354	BACH EXCAVATING LLC	SAND	09/20/2024	\$742.50	P
16242355	BACH EXCAVATING LLC	SAND	09/20/2024	\$123.75	P
16242356	BACH EXCAVATING LLC	SAND	09/20/2024	\$337.50	P
16242357	BECKER TRUCKING & EXCAVATING INC	AGGREGATES	09/04/2024	\$13,030.07	P
16242358	CHIPPEWA CONCRETE SERVICES INC	CTH P & K	09/21/2024	\$98,410.73	P
16242359	HENRY G MEIGS LLC	CTH Z RPE	09/20/2024	\$71,934.88	P
16242360	MILESTONE MATERIALS	AGGREGATES	09/20/2024	\$6,382.43	P
16242361	MILESTONE MATERIALS	AGGREGATES	09/20/2024	\$14,367.44	P
16242362	SENN BLACKTOP INC	OIL FOR HOT MIX	09/18/2024	\$13,147.20	P
16242363	SENN BLACKTOP INC	OIL FOR HOT MIX	09/18/2024	\$13,152.15	P
16242364	SENN BLACKTOP INC	OIL FOR HOT MIX	09/19/2024	\$13,147.20	P
16242365	SENN BLACKTOP INC	OIL FOR HOT MIX	09/19/2024	\$13,152.15	P
16242366	SENN BLACKTOP INC	OIL FOR HOT MIX	09/20/2024	\$13,147.20	P
16242367	SENN BLACKTOP INC	OIL FOR HOT MIX	09/20/2024	\$13,171.95	P
16242368	SENN BLACKTOP INC	OIL FOR HOT MIX	09/09/2024	\$13,176.90	P
16242369	BATTEN DAVID	RETURN OF PERMIT DEPOSIT	01/01/2024	\$300.00	P
16242370	KETCHUM ROBERTA	RETURN OF PERMIT DEPOSIT	01/01/2024	\$300.00	P
16242371	SCHMUTZER CASON	RETURN OF PERMIT DEPOSIT	09/04/2024	\$300.00	P
16242372	STEVE SCHNEIDER TRUCKING LLC	SAND	09/05/2024	\$1,012.50	P
16242373	UNIFIRST CORPORATION	APPAREL	06/20/2024	\$135.90	P
16242374	WAYERSKI BRUCE	RETURN OF PERMIT DEPOSIT	04/22/2024	\$300.00	P
16242375	WE ENERGIES	NATURAL GAS - MFLD SHOP	09/17/2024	\$28.04	P
16242376	WI DEPT OF NATURAL RESOURCES	CTH A LIABILITY CERTIFICATION	09/18/2024	\$700.00	P
16242377	NORSTAR INDUSTRIES INC	3220 VEGETATION UNIT	09/12/2024	\$95,751.00	P
16242378	AMAZON CAPITAL SERVICES	OFFICE SUPPLIES	09/24/2024	\$20.99	P
16242379	TOWN OF GRAND RAPIDS	MOWING	09/26/2024	\$1,234.31	P
16242380	JEFF ERTL TRUCKING LLC	PRIVATE TRUCKS	09/30/2024	\$1,800.00	P
16242381	LA TRUCKING	PRIVATE TRUCKS	09/30/2024	\$18,865.00	P
16242382	MARATHON COUNTY TREASURER	USH 10 TACK SPRAYING	08/31/2024	\$1,063.94	P
16242383	MILESTONE MATERIALS	AGGREGATES	09/27/2024	\$7,487.55	P
16242384	PELOT RICHARD E	RETURN OF PERMIT DEPOSIT	07/08/2024	\$300.00	P
16242385	RIVER VALLEY SUPPLY	PARTS	08/05/2024	\$3,782.71	P
16242386	RIVER VALLEY SUPPLY	PARTS	08/07/2024	\$1,602.59	P

HIGHWAY - SEPTEMBER

16242353 - 16242643

Voucher	Vendor Name	Nature of Claim	Doc Date	Amount	Paid
16242387	SCHILL TRUCKING INC	PRIVATE TRUCKS	09/30/2024	(Voided)	P
16242388	SENN BLACKTOP INC	OIL FOR HOT MIX	09/26/2024	\$13,147.20	P
16242389	SENN BLACKTOP INC	OIL FOR HOT MIX	09/25/2024	\$13,147.20	P
16242390	SENN BLACKTOP INC	OIL FOR HOT MIX	09/30/2024	\$13,171.95	P
16242391	CITY OF WISCONSIN RAPIDS	PIPE INSPECTION	09/17/2024	\$414.19	P
16242392	NAGEL JAMES	RETURN OF PERMIT DEPOSIT	09/13/2024	\$300.00	P
16242393	DIEBEL BRIAN	RETURN OF PERMIT DEPOSIT	09/06/2024	\$300.00	P
16242394	VALLEY SEALCOAT INC	CTH F SEALCOAT	09/30/2024	\$159,051.30	P
16242395	ACE HARDWARE	PARTS	09/25/2024	\$31.98	P
16242396	ACE HARDWARE	PARTS	09/11/2024	\$27.99	P
16242397	ADAMS COUNTY HIGHWAY DEPT	SEALCOATING	06/15/2024	\$21,311.68	P
16242398	ADVANCE JANITORIAL SERVICE & SUPPLY	CARPET/FLOOR CLEANING SERVICE	09/25/2024	\$618.41	P
16242399	ADVANCE AUTO PARTS (Wis Rapids)	PARTS	09/03/2024	\$68.36	P
16242400	ADVANCE AUTO PARTS (Wis Rapids)	PARTS	09/03/2024	\$22.42	P
16242401	ADVANCE AUTO PARTS (Wis Rapids)	PARTS	09/03/2024	\$258.59	P
16242402	ADVANCE AUTO PARTS (Wis Rapids)	PARTS	09/03/2024	\$20.47	P
16242403	ADVANCE AUTO PARTS (Wis Rapids)	PARTS	09/03/2024	\$44.00	P
16242404	ADVANCE AUTO PARTS (Wis Rapids)	PARTS	09/03/2024	\$21.44	P
16242405	ADVANCE AUTO PARTS (Wis Rapids)	PARTS	09/03/2024	\$32.30	P
16242406	ADVANCE AUTO PARTS (Wis Rapids)	PARTS	09/04/2024	(\$294.65)	P
16242407	ADVANCE AUTO PARTS (Wis Rapids)	PARTS	09/04/2024	\$55.92	P
16242408	ADVANCE AUTO PARTS (Wis Rapids)	PARTS	09/04/2024	\$289.57	P
16242409	ADVANCE AUTO PARTS (Wis Rapids)	PARTS	09/04/2024	\$28.54	P
16242410	ADVANCE AUTO PARTS (Wis Rapids)	PARTS	09/05/2024	\$166.16	P
16242411	ADVANCE AUTO PARTS (Wis Rapids)	PARTS	09/05/2024	\$49.24	P
16242412	ADVANCE AUTO PARTS (Wis Rapids)	PARTS	09/05/2024	\$6.82	P
16242413	ADVANCE AUTO PARTS (Wis Rapids)	PARTS	09/06/2024	(\$166.16)	P
16242414	ADVANCE AUTO PARTS (Wis Rapids)	PARTS	09/06/2024	\$300.35	P
16242415	ADVANCE AUTO PARTS (Wis Rapids)	PARTS	09/06/2024	\$63.48	P
16242416	ADVANCE AUTO PARTS (Wis Rapids)	PARTS	09/06/2024	\$78.36	P
16242417	ADVANCE AUTO PARTS (Wis Rapids)	PARTS	09/06/2024	\$6.36	P
16242418	ADVANCE AUTO PARTS (Wis Rapids)	PARTS	09/09/2024	\$179.09	P
16242419	ADVANCE AUTO PARTS (Wis Rapids)	PARTS	09/09/2024	\$44.84	P
16242420	ADVANCE AUTO PARTS (Wis Rapids)	PARTS	09/10/2024	\$134.76	P
16242421	ADVANCE AUTO PARTS (Wis Rapids)	PARTS	09/11/2024	(\$6.36)	P
16242422	ADVANCE AUTO PARTS (Wis Rapids)	PARTS	09/11/2024	\$31.84	P
16242423	ADVANCE AUTO PARTS (Wis Rapids)	PARTS	09/11/2024	\$122.63	P
16242424	ADVANCE AUTO PARTS (Wis Rapids)	PARTS	09/11/2024	\$11.88	P
16242425	ADVANCE AUTO PARTS (Wis Rapids)	PARTS	09/11/2024	\$280.30	P
16242426	ADVANCE AUTO PARTS (Wis Rapids)	PARTS	09/12/2024	\$23.88	P
16242427	ADVANCE AUTO PARTS (Wis Rapids)	PARTS	09/12/2024	\$143.99	P
16242428	ADVANCE AUTO PARTS (Wis Rapids)	PARTS	09/12/2024	\$18.01	P
16242429	ADVANCE AUTO PARTS (Wis Rapids)	PARTS	09/12/2024	\$136.38	P
16242430	ADVANCE AUTO PARTS (Wis Rapids)	PARTS	09/13/2024	(\$143.99)	P

HIGHWAY - SEPTEMBER

16242353 - 16242643

Voucher	Vendor Name	Nature of Claim	Doc Date	Amount	Paid
16242431	ADVANCE AUTO PARTS (Wis Rapids)	PARTS	09/13/2024	\$50.60	P
16242432	ADVANCE AUTO PARTS (Wis Rapids)	PARTS	09/16/2024	\$172.34	P
16242433	ADVANCE AUTO PARTS (Wis Rapids)	PARTS	09/17/2024	\$152.30	P
16242434	ADVANCE AUTO PARTS (Wis Rapids)	PARTS	09/18/2024	(\$22.00)	P
16242435	ADVANCE AUTO PARTS (Wis Rapids)	PARTS	09/18/2024	\$43.00	P
16242436	ADVANCE AUTO PARTS (Wis Rapids)	PARTS	09/19/2024	\$133.25	P
16242437	ADVANCE AUTO PARTS (Wis Rapids)	PARTS	09/20/2024	\$12.72	P
16242438	ADVANCE AUTO PARTS (Wis Rapids)	PARTS	09/20/2024	\$259.40	P
16242439	ADVANCE AUTO PARTS (Wis Rapids)	PARTS	09/20/2024	\$83.94	P
16242440	ADVANCE AUTO PARTS (Wis Rapids)	PARTS	09/23/2024	\$7.91	P
16242441	ADVANCE AUTO PARTS (Wis Rapids)	PARTS	09/24/2024	\$63.48	P
16242442	ADVANCE AUTO PARTS (Wis Rapids)	PARTS	09/25/2024	\$9.74	P
16242443	ADVANCE AUTO PARTS (Wis Rapids)	PARTS	09/27/2024	\$142.43	P
16242444	ADVANCE AUTO PARTS (Wis Rapids)	PARTS	09/30/2024	\$151.97	P
16242445	ADVANCE AUTO PARTS (Wis Rapids)	PARTS	09/30/2024	\$96.60	P
16242446	ADVANCE AUTO PARTS (Wis Rapids)	PARTS	09/30/2024	\$22.58	P
16242447	ADVANCE AUTO PARTS (Wis Rapids)	PARTS	09/30/2024	\$248.40	P
16242448	ADVANCE AUTO PARTS (Wis Rapids)	PARTS	09/30/2024	\$39.36	P
16242449	APPLIED INDUSTRIAL TECHNOLOGIES INC	PARTS	09/03/2024	\$85.80	P
16242450	APPLIED INDUSTRIAL TECHNOLOGIES INC	PARTS	09/04/2024	\$179.10	P
16242451	APPLIED INDUSTRIAL TECHNOLOGIES INC	PARTS	09/05/2024	\$84.48	P
16242452	APPLIED INDUSTRIAL TECHNOLOGIES INC	PARTS	09/06/2024	\$38.28	P
16242453	APPLIED INDUSTRIAL TECHNOLOGIES INC	PARTS	09/06/2024	\$83.56	P
16242454	APPLIED INDUSTRIAL TECHNOLOGIES INC	PARTS	09/09/2024	\$286.52	P
16242455	APPLIED INDUSTRIAL TECHNOLOGIES INC	PARTS	09/09/2024	\$62.46	P
16242456	APPLIED INDUSTRIAL TECHNOLOGIES INC	PARTS	09/11/2024	\$88.83	P
16242457	APPLIED INDUSTRIAL TECHNOLOGIES INC	PARTS	09/18/2024	\$51.48	P
16242458	APPLIED INDUSTRIAL TECHNOLOGIES INC	PARTS	09/18/2024	\$1,428.17	P
16242459	APPLIED INDUSTRIAL TECHNOLOGIES INC	PARTS	09/09/2024	\$1,978.10	P
16242460	APPLIED INDUSTRIAL TECHNOLOGIES INC	PARTS	09/16/2024	\$15.01	P
16242461	APPLIED INDUSTRIAL TECHNOLOGIES INC	PARTS	09/18/2024	\$60.17	P
16242462	APPLIED INDUSTRIAL TECHNOLOGIES INC	PARTS	09/23/2024	\$57.69	P
16242463	APPLIED INDUSTRIAL TECHNOLOGIES INC	PARTS	09/23/2024	\$20.65	P
16242464	APPLIED INDUSTRIAL TECHNOLOGIES INC	PARTS	09/25/2024	\$52.62	P
16242465	ARING EQUIPMENT COMPANY	PARTS	09/24/2024	\$31.58	P
16242466	ARING EQUIPMENT COMPANY	PARTS	09/25/2024	\$2,228.93	P
16242467	ARING EQUIPMENT COMPANY	PARTS	09/25/2024	\$741.78	P
16242468	ASCENDANCE TRUCKS CENTRAL LLC	PARTS	09/19/2024	\$232.42	P
16242469	ASCENDANCE TRUCKS CENTRAL LLC	PARTS	09/20/2024	\$185.38	P
16242470	ASCENDANCE TRUCKS CENTRAL LLC	PARTS	09/23/2024	\$63.19	P
16242471	ASCENDANCE TRUCKS CENTRAL LLC	PARTS	09/23/2024	\$63.19	P
16242472	ASCENDANCE TRUCKS CENTRAL LLC	PARTS	09/24/2024	\$91.30	P
16242473	AT&T-ATLANTA	TELEPHONE (MFLD)	09/21/2024	\$48.40	P
16242474	NORTH CENTRAL UTILITY OF WI	PARTS	09/03/2024	\$151.50	P

HIGHWAY - SEPTEMBER

16242353 - 16242643

Voucher	Vendor Name	Nature of Claim	Doc Date	Amount	Paid
16242475	NORTH CENTRAL UTILITY OF WI	PARTS	09/03/2024	\$15.88	P
16242476	NORTH CENTRAL UTILITY OF WI	PARTS	09/03/2024	\$66.00	P
16242477	NORTH CENTRAL UTILITY OF WI	PARTS	09/10/2024	\$39.24	P
16242478	NORTH CENTRAL UTILITY OF WI	PARTS	09/18/2024	\$51.33	P
16242479	NORTH CENTRAL UTILITY OF WI	PARTS	09/18/2024	\$15.12	P
16242480	NORTH CENTRAL UTILITY OF WI	PARTS	09/19/2024	\$92.41	P
16242481	NORTH CENTRAL UTILITY OF WI	PARTS	09/20/2024	\$77.54	P
16242482	NORTH CENTRAL UTILITY OF WI	PARTS	09/27/2024	\$98.20	P
16242483	BROOKS TRACTOR INC	PARTS	09/13/2024	\$204.93	P
16242484	CHILI IMPLEMENT CO	TRACTOR REPAIR	08/28/2024	\$965.31	P
16242485	CITY OF MARSHFIELD	PARTS	10/03/2024	\$981.75	P
16242486	CMK STARTER AND ALTERNATOR REBUILD LLC	PARTS	09/03/2024	\$345.00	P
16242487	CROCKETT SEPTIC LLC	PORTABLE TOILET PUMPING FEE	10/03/2024	\$80.00	P
16242488	FAIRCHILD EQUIPMENT	PARTS	09/06/2024	\$480.70	P
16242489	FASTENAL COMPANY	PARTS	09/18/2024	\$278.72	P
16242490	FERGUSON ENTERPRISES LLC	PARTS	08/26/2024	\$919.45	P
16242491	FERGUSON ENTERPRISES LLC	PARTS	09/27/2024	\$34.78	P
16242492	FLEETPRIDE	PARTS	09/05/2024	\$292.86	P
16242493	FLEETPRIDE	PARTS	09/23/2024	\$108.16	P
16242494	FRONTIER	TELEPHONE - MFLD	09/28/2024	\$76.68	P
16242495	GRAY'S INC	BLADES	09/03/2024	\$12,250.00	P
16242496	GRAY'S INC	BLADES	09/24/2024	\$22,291.90	P
16242497	HAAS BUILDERS SUPPLY INC	PARTS	09/27/2024	\$174.00	P
16242498	HAAS BUILDERS SUPPLY INC	PARTS	09/24/2024	\$40.70	P
16242499	HALRON LUBRICANTS INC	PARTS	09/19/2024	\$284.92	P
16242500	HALRON LUBRICANTS INC	PARTS	09/19/2024	\$1,199.00	P
16242501	HALRON LUBRICANTS INC	PARTS	09/20/2024	(\$40.00)	P
16242502	HIGHWAY CONSTRUCTION PRODUCTS LLC	PARTS	09/13/2024	\$2,218.50	P
16242503	HYDRAULIC REPAIR SPECIALISTS LLC	HYDRAULIC REPAIRS	08/29/2024	\$1,700.00	P
16242504	HYDRAULIC REPAIR SPECIALISTS LLC	HYDRAULIC REPAIR	09/19/2024	\$690.00	P
16242505	JFTCO INC	PARTS	09/17/2024	\$185.57	P
16242506	JFTCO INC	PARTS	09/17/2024	\$121.82	P
16242507	JFTCO INC	PARTS	09/17/2024	(\$89.82)	P
16242508	JFTCO INC	PARTS	09/20/2024	\$407.99	P
16242509	JFTCO INC	PARTS	09/25/2024	\$136.66	P
16242510	JFTCO INC	PARTS	09/26/2024	\$1,413.58	P
16242511	JFTCO INC	PARTS	09/26/2024	\$39.50	P
16242512	JOHN DEERE FINANCIAL	PARTS	09/25/2024	\$930.97	P
16242513	JOHNSON & SONS CO INC	PARTS	09/05/2024	\$349.50	P
16242514	JOHNSON & SONS CO INC	PARTS	09/27/2024	\$32.40	P
16242515	JOHNSON & SONS CO INC	PARTS	09/30/2024	\$37.44	P
16242516	JX ENTERPRISES INC	PARTS	09/17/2024	\$70.11	P
16242517	JX ENTERPRISES INC	PARTS	09/16/2024	\$124.15	P
16242518	KOLO TRUCKING AND EXCAVATING INC	SAND FOR HOT MIX	09/29/2024	\$7,962.41	P

HIGHWAY - SEPTEMBER

16242353 - 16242643

Voucher	Vendor Name	Nature of Claim	Doc Date	Amount	Paid
16242519	MARSHFIELD UTILITIES	UTILITIES - MFLD	09/30/2024	\$156.38	P
16242520	MARSHFIELD UTILITIES	UTILITIES - MFLD	09/30/2024	\$253.59	P
16242521	MARSHFIELD UTILITIES	UTILITIES - MFLD	09/30/2024	\$53.80	P
16242522	MILLER-BRADFORD & RISBERG INC	PARTS	09/26/2024	\$1,536.78	P
16242523	MIDWEST AXLE REPAIR INC	AXLE REPAIR	10/02/2024	\$1,295.00	P
16242524	MILESTONE MATERIALS	AGGREGATES	06/28/2024	\$1,556.05	P
16242525	MILESTONE MATERIALS	AGGREGATES	07/31/2024	\$190.75	P
16242526	MILESTONE MATERIALS	AGGREGATES	09/30/2024	\$1,381.94	P
16242527	MILESTONE MATERIALS	PARTS	09/30/2024	\$7,588.32	P
16242528	MILESTONE MATERIALS	AGGREGATES	09/30/2024	\$1,988.10	P
16242529	MILESTONE MATERIALS	AGGREGATES	10/04/2024	\$2,478.34	P
16242530	MILESTONE MATERIALS	AGGREGATES	10/04/2024	\$971.64	P
16242531	MILESTONE MATERIALS	AGGREGATES	10/04/2024	\$2,562.65	P
16242532	MISSISSIPPI WELDERS SUPPLY CO INC	WELDING SUPPLIES	09/12/2024	\$214.49	P
16242533	MISSISSIPPI WELDERS SUPPLY CO INC	WELDING SUPPLIES	09/12/2024	\$131.26	P
16242534	MISSISSIPPI WELDERS SUPPLY CO INC	WELDING SUPPLIES	09/12/2024	\$89.10	P
16242535	MISSISSIPPI WELDERS SUPPLY CO INC	WELDING SUPPLIES	09/12/2024	\$77.40	P
16242536	MISSISSIPPI WELDERS SUPPLY CO INC	WELDING SUPPLIES	09/19/2024	\$718.00	P
16242537	MISSISSIPPI WELDERS SUPPLY CO INC	WELDING SUPPLIES	09/26/2024	\$191.40	P
16242538	MISSISSIPPI WELDERS SUPPLY CO INC	WELDING SUPPLIES	09/30/2024	\$252.00	P
16242539	MONROE TRUCK EQUIPMENT	PARTS	09/25/2024	\$1,550.94	P
16242540	MONROE TRUCK EQUIPMENT	PARTS	09/25/2024	\$40.92	P
16242541	NAPA CENTRAL WI AUTO PARTS	PARTS	09/05/2024	\$38.98	P
16242542	NAPA CENTRAL WI AUTO PARTS	PARTS	09/06/2024	\$8.00	P
16242543	NAPA CENTRAL WI AUTO PARTS	PARTS	09/10/2024	\$46.65	P
16242544	NAPA CENTRAL WI AUTO PARTS	PARTS	09/11/2024	\$44.09	P
16242545	NAPA CENTRAL WI AUTO PARTS	PARTS	09/11/2024	\$31.95	P
16242546	NAPA CENTRAL WI AUTO PARTS	PARTS	09/17/2024	\$84.14	P
16242547	NAPA CENTRAL WI AUTO PARTS	PARTS	09/18/2024	\$19.08	P
16242548	NAPA CENTRAL WI AUTO PARTS	PARTS	09/18/2024	(\$31.95)	P
16242549	NAPA CENTRAL WI AUTO PARTS	PARTS	09/18/2024	\$227.98	P
16242550	NAPA CENTRAL WI AUTO PARTS	PARTS	09/24/2024	\$35.72	P
16242551	NAPA CENTRAL WI AUTO PARTS	PARTS	09/25/2024	(\$227.98)	P
16242552	NAPA CENTRAL WI AUTO PARTS	PARTS	09/27/2024	\$37.99	P
16242553	NAPA CENTRAL WI AUTO PARTS	PARTS	09/27/2024	\$100.00	P
16242554	NAPA CENTRAL WI AUTO PARTS	PARTS	09/30/2024	\$79.64	P
16242555	POMP'S TIRE SERVICE INC - Milw	TIRES	09/19/2024	\$4,499.92	P
16242556	POMP'S TIRE SERVICE INC - Milw	TIRES	09/26/2024	\$599.64	P
16242557	PRECISE MRM LLC	FLAT PLAN USA GPRS NAF	10/01/2024	\$1,012.00	P
16242558	QUALITY FEED & SEED	GRASS SEED	09/10/2024	\$110.00	P
16242559	QUALITY FOODS IGA WEST GRAND	HIRC DOUGHNUTS	09/10/2024	\$13.00	P
16242560	RAPIDS FORD LLC	PARTS	09/10/2024	\$372.63	P
16242561	RAPIDS FORD LLC	PARTS	09/18/2024	\$57.85	P
16242562	RAPIDS FORD LLC	PARTS	09/18/2024	(\$57.85)	P

HIGHWAY - SEPTEMBER

16242353 - 16242643

Voucher	Vendor Name	Nature of Claim	Doc Date	Amount	Paid
16242563	RAPIDS FORD LLC	PARTS	09/19/2024	\$670.97	P
16242564	RAPIDS FORD LLC	PARTS	09/19/2024	(\$57.85)	P
16242565	RAPIDS FORD LLC	PARTS	09/25/2024	\$22.00	P
16242566	RAPIDS FORD LLC	PARTS	09/25/2024	\$53.37	P
16242567	RIVER VALLEY SUPPLY	PARTS	09/30/2024	\$580.32	P
16242568	ROCK OIL REFINING INC	FILTER RECYCLING	09/17/2024	\$130.50	P
16242569	SCHILLING SUPPLY COMPANY	PARTS	09/24/2024	\$439.45	P
16242570	SCHILL TRUCKING INC	PRIVATE TRUCKS	09/30/2024	\$9,982.50	P
16242571	SERVICE MOTOR COMPANY	PARTS	09/17/2024	\$19.06	P
16242572	SOLARUS	TELEPHONE - WR & HOT MIX	10/01/2024	\$148.14	P
16242573	STERLING WATER INC	WATER FOR HOT MIX	09/30/2024	\$90.55	P
16242574	TRACTOR SUPPLY CREDIT PLAN	PARTS	09/29/2024	\$26.99	P
16242575	TRUCK EQUIPMENT INC	PARTS	09/23/2024	\$263.86	P
16242576	ISTATE TRUCK CENTER	PARTS	09/05/2024	\$252.31	P
16242577	ISTATE TRUCK CENTER	PARTS	09/06/2024	\$132.44	P
16242578	ISTATE TRUCK CENTER	PARTS	09/09/2024	\$106.30	P
16242579	ISTATE TRUCK CENTER	PARTS	09/09/2024	(\$14.37)	P
16242580	ISTATE TRUCK CENTER	PARTS	09/10/2024	\$132.44	P
16242581	ISTATE TRUCK CENTER	PARTS	09/11/2024	\$227.36	P
16242582	ISTATE TRUCK CENTER	PARTS	09/11/2024	\$23.54	P
16242583	ISTATE TRUCK CENTER	PARTS	09/16/2024	(\$132.44)	P
16242584	ISTATE TRUCK CENTER	PARTS	09/17/2024	\$119.38	P
16242585	ISTATE TRUCK CENTER	PARTS	09/19/2024	\$123.17	P
16242586	ISTATE TRUCK CENTER	PARTS	09/19/2024	\$85.19	P
16242587	ISTATE TRUCK CENTER	PARTS	09/20/2024	\$169.60	P
16242588	ISTATE TRUCK CENTER	PARTS	09/24/2024	\$13.76	P
16242589	ISTATE TRUCK CENTER	PARTS	09/25/2024	\$135.99	P
16242590	ISTATE TRUCK CENTER	PARTS	09/25/2024	\$45.98	P
16242591	ISTATE TRUCK CENTER	PARTS	09/25/2024	(\$15.56)	P
16242592	ISTATE TRUCK CENTER	PARTS	09/26/2024	\$206.36	P
16242593	ISTATE TRUCK CENTER	PARTS	09/26/2024	\$19.79	P
16242594	ISTATE TRUCK CENTER	PARTS	09/27/2024	\$53.17	P
16242595	ISTATE TRUCK CENTER	PARTS	09/27/2024	(\$27.00)	P
16242596	ISTATE TRUCK CENTER	PARTS	09/30/2024	\$616.49	P
16242597	ISTATE TRUCK CENTER	PARTS	09/30/2024	\$409.96	P
16242598	ISTATE TRUCK CENTER	PARTS	09/30/2024	\$13.92	P
16242599	ISTATE TRUCK CENTER	PARTS	09/30/2024	\$9.09	P
16242600	WATER WORKS & LIGHTING COMM	UTILITIES - WR	09/26/2024	\$18.30	P
16242601	WATER WORKS & LIGHTING COMM	UTILITIES - WR	09/26/2024	\$2,357.78	P
16242602	WATER WORKS & LIGHTING COMM	UTILITIES - WR	09/26/2024	\$14.68	P
16242603	WATER WORKS & LIGHTING COMM	PARTS	09/26/2024	\$1.98	P
16242604	WATER WORKS & LIGHTING COMM	UTILITIES - WR	09/26/2024	\$1.98	P
16242605	WATER WORKS & LIGHTING COMM	UTILITIES - HOT MIX	09/26/2024	\$5,267.31	P
16242606	WATER WORKS & LIGHTING COMM	UTILITIES - BRINE	09/26/2024	\$268.85	P

HIGHWAY - SEPTEMBER

16242353 - 16242643

Voucher	Vendor Name	Nature of Claim	Doc Date	Amount	Paid
16242607	WE ENERGIES	NATURAL GAS - HOT MIX	09/30/2024	\$6,237.10	P
16242608	WEYERS EQUIPMENT INC	PARTS	09/18/2024	\$503.35	P
16242609	WEYERS EQUIPMENT INC	PARTS	09/27/2024	\$316.22	P
16242610	WHEELERS OF WISCONSIN RAPIDS	PARTS	09/30/2024	\$2.05	P
16242611	WINTER EQUIPMENT CO INC	PLOW BLADES/SHOES	09/03/2024	\$27,705.35	P
16242612	WISCONSIN VALLEY BUILDING PRODUCTS	PARTS	09/11/2024	\$85.00	P
16242613	WISCONSIN METALS	BLACKSMITH STEEL	09/04/2024	\$340.00	P
16242614	WI DEPT OF TRANSPORTATION - BFS	PROJECT COSTS	10/01/2024	\$1,050.46	P
16242615	WI DEPT OF TRANSPORTATION - BFS	PROJECT COSTS	10/01/2024	\$1,384.54	P
16242616	STAPLES ADVANTAGE	OFFICE SUPPLIES	09/11/2024	\$109.89	
16242617	ARBOR GREEN INC	GUARD RAIL INSTALLATION	09/30/2024	\$78,888.75	
16242618	ASCENDANCE TRUCKS CENTRAL LLC	PARTS	09/30/2024	\$3,276.88	
16242619	BECKER TRUCKING & EXCAVATING INC	AGGREGATE MATERIALS	10/01/2024	\$8,357.56	
16242620	CINTAS CORPORATION	CLEANING RUGS & UNIFORMS	09/03/2024	\$509.80	
16242621	CINTAS CORPORATION	CLEANING RUGS & UNIFORMS	09/09/2024	\$509.80	
16242622	CINTAS CORPORATION	CLEANING RUGS & UNIFORMS	09/16/2024	\$509.80	
16242623	CINTAS CORPORATION	CLEANING RUGS & UNIFORMS	09/23/2024	\$509.80	
16242624	CINTAS CORPORATION	CLEANING RUGS & UNIFORMS	09/30/2024	\$509.80	
16242625	CINTAS CORPORATION	CLEANING RUGS & UNIFORMS	09/05/2024	\$1,286.16	
16242626	CINTAS CORPORATION	CLEANING RUGS & UNIFORMS	09/11/2024	\$1,280.52	
16242627	CINTAS CORPORATION	CLEANING RUGS & UNIFORMS	09/18/2024	\$1,280.52	
16242628	CINTAS CORPORATION	CLEANING RUGS & UNIFORMS	09/25/2024	\$1,310.61	
16242629	CINTAS CORPORATION	CLEANING RUGS & UNIFORMS	09/05/2024	\$52.97	
16242630	CINTAS CORPORATION	CLEANING RUGS & UNIFORMS	09/18/2024	\$52.97	
16242631	CNE GAS	NATURAL GAS - HOT MIX	10/09/2024	\$9,476.10	
16242632	PAK RAT LLC	TRAINING MEAL	10/10/2024	\$330.40	
16242633	HOME DEPOT CREDIT SERVICES	PARTS	10/04/2024	\$141.30	
16242634	MILESTONE MATERIALS	AGGREGATES	10/11/2024	\$51,723.75	
16242635	MILESTONE MATERIALS	AGGREGATES	10/11/2024	\$2,803.40	
16242636	MILESTONE MATERIALS	AGGREGATES	10/11/2024	\$17,913.25	
16242637	PROVISION PARTNERS	DIESEL FUEL & GASOLINE	09/30/2024	\$43,622.12	
16242638	SHORT ELLIOTT HENDRICKSON INC	CTH A DESIGN	10/03/2024	\$30,662.94	
16242639	STERNITZKY DEAN	RETURN OF PERMIT DEPOSIT	07/08/2024	\$300.00	
16242640	STEVE SCHNEIDER TRUCKING LLC	AGGREGATES	10/07/2024	\$510.00	
16242641	WASTE MANAGEMENT	GARBAGE DISPOSAL	10/03/2024	\$203.05	
16242642	WASTE MANAGEMENT	GARBAGE DISPOSAL	10/01/2024	\$369.96	
16242643	WESTWOOD INFRASTRUCTURE INC	CTHU EXTENSION	10/08/2024	\$31,071.52	
Grand Total:				\$1,104,676.35	

Signatures

Committee Chair: _____

Committee Member: _____

Committee Member: _____

Committee Member: _____

Committee Member: _____

Committee Member: _____

Committee Member: _____

Committee Member: _____

Committee Member: _____



Parks & Forestry Department Reports

November 7, 2024

Director Report, by Chad Schooley

- Continue assisting with South Park storm shelter project management. Final punchlist items are being completed. Hwy Dpt completed paving parkinglot in October and did a great job.
- Continue project management for Powers Bluff Maintenance Shop Project. Site work is complete and concrete is scheduled for 1st week in November.
- As a result of the October HIRC meeting discussion on CERA Park, I reached out to Peter K. regarding required next steps. He advised that at this point we would need approval from the PIT Committee, or full County Board, to proceed with any negotiations regarding a lease. In light of this I have asked to be placed on the November 4th PIT agenda for approval of lease negotiations. If approved, I will move forward with discussions/negotiations of lease, and provide to HIRC for further consideration.
- 1st airing of Discover Wisconsin was on October 20th, highlighting Wood County Parks 90th anniversary in 2025. There will be another airing in April, along with a public showing/celebration. More details to come.
- There is a FAQ brochure in your packet regarding an EAB control option at Powers Bluff. This idea was brought up by members of the Friends of Powers Bluff. A DNR representative is invited to the meeting to answer any questions you may have.
- Lake Wazeecha (Red Sands Beach Area) dredge project was completed the week of 10-21-24. Everything went well. Turbidity curtains will be removed from the lake the week of November 4th.
- Met with representatives from the WI highschool mountain biking group. They are considering Powers Bluff as a host site in 2025 for a state wide race. More discussion will follow.
- **Special Use Permits**
 - None at this time

Maintenance Program Supervisor Report, by Dan Vollert

Construction Projects

- South Park- Old wood fence roof replacement is complete
- South Park-capped north fireplace chimney on Red Beach Stone Shelter.
- North Park-south campground Entrance Road has been widened, uplifted and culverts replaced by Wood County Hwy. Dept.
- Dexter Park-Reshape and level out camp pads to appropriate size.
- Powers Bluff-Shop location flagged out for site work.

Maintenance Operations

- South Park: 2025 Chevy 1 ton from Wheelers and box put on by Monroe. In use.
- South Park: Woman's side of showerhouse walls being stripped of dairy board and block painted.
- South Park: Finish dredge project cleanup—silt fencing, leveling area out.
- North Park: Emerald Ash Borer Trees and Oak Wilt trees being removed. Cleaning up wood storage area.

- Dexter Park: Brush mowing trails and open areas.
- Dexter Park: Uplifting trails north and west of campground areas. Also hauling sand to beaches & playgrounds
- All Parks: Mulching & blowing leaves. Building plumbing winterizing and shutdown for season. Prepping parks for winter operations.
- New Felling 24 ton Equipment Trailer has been picked up and in use.

Employee Matters

- Rangers and LTEs are done for the 2024 season.
- FTEs completed annual safety training and open enrollment on 10/29/2024 in Courthouse Training Room.
- Currently looking for (2) Emergency Medical Responders for Winter Sports at Powers Bluff.

Snowmobile/ATV

- Auburndale (DH) Snowmobile Bridge project off of CTH N east of Arpin has been awarded to Earth, Inc. Should be started late fall early winter.
- Hay Creek ATV project: The bridge install company, Janke General Contractors, Inc. has completed bridge intall. Peterson Road section is completed with road base/culverts. Hay Creek Road section of trail has 0.8 miles of road base to lay. This will be completed when frost sets up. Once roadbase is finished the project will be completed with signage in the spring of 2025 and opened.
- Rudolph Plum Road Project is almost completed. A final load of fill and leveling out culvert site will be done this fall.

Office Supervisor Report, by Stacie Kleifgen

- Began process of updating site information for each campground. Along with Program Assistant, went to each park to measure each site. Will input information into reservation system and maintain updated site log to assist customers with site selection.
- Prepare for year end by reconciling accounts and projects.
- Continue updating forms for 2025.

Forest Administrator Report, by Fritz Schubert

- Timber Sales: Three active timber sales in October. Logging activity is picking up a little bit due to recent dry weather.
- Timber sale establishment Compartment 56.
- Investigated illegal deer stands and food plots. Contacted DNR Warden and Wood County Law Enforcement. Removed illegal prefab elevated blind and ladder stands.
- Investigated possible illegal camper issue on Wood County Forest.
- Received ditch cleaning request and began gathering information.
- Began investigating possible fiber optic utility trespass on Wood County Forest.
- Forestry Technician: Cleaned shooting range, Hay Creek ATV trail ditching and road base, conducted forest recon, mowed roads and parking areas in Wood County Forest, picked up new equipment trailer.

Questions and Answers: Biological Control for Emerald Ash Borer

For several years, the U.S. Department of Agriculture’s Animal and Plant Health Inspection Service (APHIS) has used the emerald ash borer’s (EAB) natural enemies—tiny stingless wasps known as parasitoids—as biological control agents to help manage infestations. The goal of APHIS’ EAB program is to help maintain ash trees as part of the North American landscape and biological control significantly contributes to this goal.

What is biological control?

Biological control, or biocontrol, uses natural enemies such as parasitoids, predators, pathogens, or antagonists to reduce plant pests or diseases. Biological control can be a practical and an environmentally sound method for pest control. The biological control agents used against EAB include four tiny stingless wasp species—the largest is about the size of a typical mosquito.



SPATHIUS AGRILI



SPATHIUS GALINAE



OBIUS AGRILI

Why is biological control used against EAB?

Soon after the EAB was first detected in the United States, APHIS, the Agricultural Research Service, and the U.S. Forest Service began looking for natural enemies to fight the infestation. We conducted research in EAB’s native range in China and found three biological control agents—*Spathius agrili*, *Tetrastichus planipennisi*, and *Oobius agrili*. Several years later we also found *Spathius galinae* in Russia. These four wasp species specifically hunt and kill EAB, which helps reduce the number of EAB infesting and killing ash trees. Three species attack EAB larvae and one targets EAB eggs.



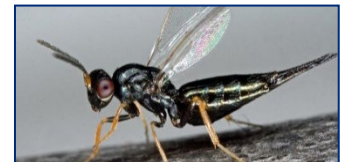
SPATHIUS GALINAE



SPATHIUS AGRILI



OBIUS AGRILI



TETRASTICHUS PLANIPENNISI

- *Spathius agrili* has a long egg-laying organ or ovipositor that helps it attack EAB larvae in many different sized ash trees. This wasp penetrates through tree bark and lays up to 20 eggs on an EAB larva. The hatching wasp larvae feed and develop on the EAB larva, resulting in its death.
- *Spathius galinae* also attacks EAB larvae like *Spathius agrili* does, but what makes this wasp different is that it can tolerate colder climates, which makes it an optimal biological control agent for releasing in the northern states.
- *Tetrastichus planipennisi* also attacks EAB larvae, but the female lays eggs inside EAB larvae where the wasp larvae grow and eventually kill their host. Because of its shorter ovipositor, *Tetrastichus* targets larvae in ash trees with a diameter of five inches or less.
- *Oobius agrili* is the smallest of the wasps and targets EAB eggs. When this wasp locates an EAB egg in tree bark, it injects an egg inside the host egg, where it will hatch, grow, and kill the EAB egg.

Do the wasps bother people, pets, or other creatures?

The wasps are attracted to EAB, not people or pets. The wasps may incidentally attack other *Agrilus* species that are similar to EAB, but such incidental attacks are very rare and will not disrupt their populations.

When and where have wasps been released in the United States?

APHIS first released wasps in Michigan in 2007. Since then, we have worked with biological control partners to release more than eight million wasps in 30 states and the District of Columbia—and recovered their offspring in 22 states. This means the wasps are establishing, reproducing, and more importantly, attacking and killing EAB. You can see where wasps have been released by visiting www.aphis.usda.gov/plant-health/eab.

How effective are the wasps at killing EAB?

The most recent study that was conducted in Michigan and several northeastern states showed that the wasps are killing 20-80% of EAB in ash trees up to eight inches in diameter. The study documented that more EAB are being attacked by the wasps which is resulting in less EAB attacking ash trees, and that ash trees are regenerating in these areas because wasps are being released. You can read the study online by visiting https://www.fs.fed.us/foresthealth/technology/pdfs/FHAA-ST-2017-02_Biocontrol_role_EAB_regeneration.pdf

Will biological control eventually eradicate EAB?

The wasps alone will not eradicate EAB. They can be used in an integrated pest management plan to help control the pest and benefit our landscapes.

How does APHIS determine where to release wasps?

Each year, APHIS estimates wasp production to determine the number of release sites it can support. Then release sites are selected based on biological control criteria and EAB program priorities outlined in the EAB Biocontrol Release Guidelines. You can read the guidelines online by visiting https://www.aphis.usda.gov/plant_health/plant_pest_info/emerald_ash_b/downloads/EAB-FieldRelease-Guidelines.pdf

How are wasps released?

Once the release areas are identified, APHIS ships the wasps to our biological control partners who release them in the preapproved and selected area(s). Wasps are released according to the Biological Control Release and Recovery Guidelines, see link included above. APHIS begins shipping wasps in the spring and continues until early fall.

Is it safe to release wasps since they are non-native insects?

Before the wasps were released, research in China and in the United States revealed that the wasps prefer EAB over other insects. No adverse effects were found or raised through the environmental assessment process. You can read the documents and public comments by visiting <https://www.regulations.gov/docket?D=APHIS-2014-0094>.

Can native insects be used to fight EAB instead?

While there are EAB parasitoids and predators in the United States, such as the native stingless wasps *Atanycolus* and *Cerceris fumipennis*, and woodpeckers, these native enemies do not attack EAB at levels high enough to make a difference on infestations.

How can I become a biological control partner?

If you are a public landowner or land manager in an area where EAB is infesting ash trees, you can send email containing information about the property where you would like to release wasps. If the property is selected, we will contact you by email. Please send the email to EAB.Biocontrol.Program@USDA.gov and include the following information in the body of the email:

1. Property owner/manager name;
2. Property owner/manager email address;
3. MapBio number issued through www.mapbiocontrol.org;
4. Name of the county where the property is located;
5. And the latitude and longitude of the property.

Can the stingless wasps be purchased?

No. The EAB program is providing stingless wasps to states and selected partners to release in EAB-infested public areas. Additionally, the stingless wasps are difficult to produce which limits their availability.

Where can I find more information on the EAB program and the use of biological control?

More information is available online, please visit www.aphis.usda.gov/plant-health/eab.

Photo Credits: First column left to right: USDA photo by Rhonda Santos, USDA photo by R. Anson Eaglin, USDA photo by Rhonda Santos; Second column left to right: Bugwood photo by David Cappaert, Bugwood photo by Jennifer Ayer, USDA photo by Debbie Miller, Bugwood photo by David Cappaert.



Wood County Land Information Office

Author: Wood County Land Information Office
Date Printed: 10/9/2024 4:50 PM

*Cranberry Creek Cranberries Inc.
Ditch Cleaning Proposal*

DISCLAIMER: This map is not a survey. No information on this website is intended to serve as legal evidence of size, shape, location or ownership of real estate or environmental features. Wood County assumes no liability related to the use of this map.

Wood County State Wildlife Area Advisory Committee Meeting
July 15, 2024 Minutes

Present: Dale Weis, Dennis Polach, Curt Pluke, Mike Wipfli, Scott McAuley, Dawn Schmutzer, Zak Knab, Fritz Schubert, Leo Kiedrowski, Larry Isensee

1. Call to order by Chair Weis at 5:30pm
2. Quorum declared
3. Curt made a motion to approve minutes from April 9, 2024. Scott second. All ayes. Motion carried.
4. No correspondence
5. No public comment
6. Sandhill - Meadow Valley - Wood County Update

Staffing:

- Darren was selected to represent the Wildlife Management Program to assist the Canadian Ministry of Natural Resources in an extensive Canada Goose banding project. Darren is heading north on Monday, July 15th and will be gone until August 3rd.
- Gabbie Harshbarger started on April 22nd as the FTE Wildlife Tech stationed at Sandhill. She has been on now roughly 3 months and has been doing a wonderful job! Gabbie is taking the lead on water level checks on work unit and has spent most of her time operating equipment, checking water, and learning the property.
- Curtis Calcari is LTE Wildlife Tech that started on May 20th. He will be on through the summer as he goes back to school (UWSP) in September. Curt has been focusing on fence checks, chemical application, and brush/chainsaw work on the work unit. He has been a great temporary addition to the team.
- No movement on filling the LTE educator position yet. We have had some discussions regarding alternative options for this position (partnering with other programs) but nothing solid yet. Planning to open recruitment in August/September, with hopes to have someone by October.
- Research Technician, Jason Erichson left for a new job in Oshkosh. He has been replaced by Sam Sodke. Sam started a couple weeks back and is taking over the Turkey Research project.

Discussions: Zak will provide priority lists for projects in each area; Potter Road upkeep; bears sighted in areas.

- a. Wood Cty: 4th Impoundment and Stewart Marsh are in draw down.
 - b. Sandhill: regraveled South Bluff Road; resurface parking lot soon; AV updates to classroom; dorm siding replacement upcoming; Trumpeter Trail gates have been found open and this needs to be reported. Looking at increasing recreation traffic in Sandhill and Meadow Valley via advertisement. 10-year inspection of Ditchbank dike completed. 1st Impoundment and North Wood Cty Barrens were burned this spring. Spread Lupine seeds on the barrens area after the burn. D, F, and J Flowages in draw down. Learn to Hunt had 39 applicants; hunt is Nov 2 & 3. Open hunt applications open in August; hunt is Nov 2 & 3. Trapping applications out in August also. Allotment dollars still unused but will be ordering materials soon. Spring brood count is complete but numbers not in yet. Frank (bull) and one older female has died but there were 5 calves born in 2024.
 - c. Meadow Valley: Southeast pool, West pool, Scott Flowage and West Finley are in draw downs. Wolf den found with 4 pups.
7. 2025 Allotment for equipment rental update: Zak cannot find an easy way to use our monies for rentals. Projects for 2025 could be \$10,000 for tree removal on 32 acres on the 3rd impoundment or \$5000 for 27 acres of Aspen shearing. **Dawn create a spreadsheet for where allotments have gone in prior years. The 2024 allotment is \$5000 towards Stewart Marsh and \$5000 towards new double tube culvert.
 8. 2024 Terms Ending (Jim, Dawn, Nathan) Parks Dept will handle all aspects of the end of terms. One application has been submitted to replace Nathan. Jim and Dawn were approved for another term.
 9. Member Matters: discussion occurred around focusing our allotments on multi-year projects vs reviewing annually what DNR has for high priority projects. Habitat projects are conditions permitting. DNR fiscal year runs July 1 – June 30.
 10. Future Agenda Items: Officer elections, 2025 Allotment
 11. Next meeting Monday October 14, 2024 at 5:30pm at Sandhill
 12. Motion to adjourn by Curt, second by Leo, all ayes, motion passed. Adjourned at 6:57pm.

**WOOD COUNTY PARKS & FORESTRY DEPARTMENT
REVENUE SUMMARY 2024**

October Revenue - November HIRC

BUDGETED REVENUES 2024	46721 SOURCE	FEES	YTD REVENUE	YTD REVENUE	OCT REV	OCT REV	ACTUAL REV
			2024	2023	2024	2023	2023
\$ 612,000.00	Camping Reservations	\$10 Resv. Fee+/\$21/\$26/\$29/\$36	\$541,683.37	\$ 532,060.22	\$47,793.69	\$ 31,526.18	\$ 549,512.32
\$ 45,000.00	Campground Firewood Sales	\$7 per rack	\$39,284.32	\$ 42,711.76	\$4,688.72	\$ 4,566.27	\$ 42,845.41
\$ 10,000.00	Ice	\$4 (small) /\$7 (large)	\$7,887.62	\$ 9,891.33	\$332.33	\$ 204.78	\$ 9,891.33
\$ 3,900.00	Non-Camper Dump Station	\$20	\$2,687.41	\$ 3,441.21	\$490.05	\$ 492.22	\$ 3,498.08
\$ 400.00	Camper Storage	\$20/wk - \$300/mo	\$93.46	\$ 304.91	\$0.00	\$ 109.71	\$ 304.91
\$ 900.00	Washer/Dryer/Showers	\$2 wash / \$2 dry/\$1 Laundry Pods	\$770.62	\$ 811.85	\$63.51	\$ 188.63	\$ 811.85
\$ 59,000.00	Shelters Enclosed	Various Fees based on 4 or 8 hrs or all day.	\$54,158.67	\$ 45,727.17	\$5,809.63	\$ 5,404.29	\$ 51,979.84
\$ 13,000.00	Shelters - Open	Various Fees based on location of shelter.	\$12,645.38	\$ 11,000.70	\$411.73	\$ 365.71	\$ 11,573.31
\$ 3,000.00	General Park User Fees (Use of open areas within parks)	\$75 / \$10 per picnic table	\$450.24	\$ 47.39	\$0.00	\$ -	\$ 47.39
\$ 38,000.00	Powers Bluff Winter Recreation Tickets, Parties, Rentals & Concessions	\$13/\$22/\$515/\$655/\$515/\$725/\$865	\$3,066.03	\$ 33,687.24	\$0.00	\$ -	\$ 33,687.24
\$ 5,000.00	Trail Passes (Ski/Snowshoe/Multi-Use)	\$8/daily; \$30/annual; \$60/family	\$4,454.79	\$ 3,853.69	\$338.34	\$ 220.96	\$ 4,175.49
\$ 8,500.00	Disc Golf	\$3 / \$5 / \$25 / \$50	\$4,610.32	\$ 7,616.62	\$271.67	\$ 245.92	\$ 7,657.44
\$ 500.00	Parks Pulpwood	Market Price	\$0.00	\$ -	\$0.00	\$ -	\$ -
\$ 25,000.00	Boat Launch	\$25/annual; \$7/daily	\$24,636.29	\$ 22,430.98	\$785.35	\$ 497.40	\$ 22,496.22
\$ 17,000.00	Miscellaneous		\$9,381.14	\$ 5,104.82	\$306.37	\$ 85.96	\$ 15,433.37
\$ 8,800.00	Gift Certificates	Gift Certificates	\$355.29	\$ 231.93	\$113.60	\$ 137.14	\$ 7,889.91
\$ 850,000.00			\$706,164.95	\$718,921.82	\$61,404.99	\$44,045.17	\$ 761,804.11
\$ 350,000.00	46813 - Timber Sales & Wood Cutting (90%/County & 10%/Townships) Monthly totals = NET Revenue	CONTRACTED	\$304,591.57	\$ 420,040.95	\$2,533.49	\$ 173,916.89	\$ 629,983.14
\$ 1,200,000.00		TOTAL REVENUE:	\$1,010,756.52	\$1,138,962.77	\$63,938.48	\$217,962.06	\$1,391,787.25

**WOOD COUNTY, PARKS & FORESTRY - FOREST ADMINISTRATOR
REVENUE REPORT & TIMBER SALE BALANCES**

November (October Revenue)

Budget Year 2024

CONTRACT	TRACT	CONTRACTOR	CONTRACT AWARD AMOUNT	CONTRACT AWARD DATE	CONTRACT EXPIRATION DATE	\$ RECEIVED CURRENT MONTH	AMOUNT BILLED TO DATE	AMOUNT RCVD TO DATE	BALANCE
780	2-16	YODER	\$42,886.00	7/10/2020	7/1/2025		\$20,012.67	\$20,012.67	\$0.00
781	5-19	YODER	\$9,720.00	7/10/2020	7/1/2025		\$0.00	\$0.00	\$0.00
790	4-21	SCHREINER	\$15,600.00	11/24/2021	12/31/2024		\$0.00	\$0.00	\$0.00
796	2-22	KOERNER	\$110,780.80	5/27/2022	12/31/2024		\$116,542.95	\$116,542.95	\$0.00
797	3-22	SCHREINER	\$30,770.00	5/27/2022	6/30/2025		\$0.00	\$0.00	\$0.00
798	4-22	KOERNER	\$194,468.10	5/27/2022	12/31/2024		\$201,324.04	\$201,324.04	\$0.00
799	5-22	SCHREINER	\$20,200.00	5/27/2022	7/1/2025		\$0.00	\$0.00	\$0.00
800	6-22	SCHREINER	\$16,440.00	5/27/2022	7/1/2025		\$0.00	\$0.00	\$0.00
801	7-22	WILSON	\$11,750.00	8/4/2022	7/30/2025		\$0.00	\$0.00	\$0.00
803	9-22	KOERNER	\$21,057.80	11/16/2022	12/3/2024		\$0.00	\$0.00	\$0.00
804	10-22	KOERNER	\$84,093.60	11/16/2022	12/3/2024		\$0.00	\$0.00	\$0.00
805	11-22	YODER	\$17,390.00	11/16/2022	12/3/2024		\$0.00	\$0.00	\$0.00
807	13-22	FLINK	\$9,450.00	12/31/2022	12/31/2025		\$2,274.03	\$2,274.03	\$0.00
809	2-23	KOERNER	\$66,089.00	6/1/2023	6/1/2025		\$76,019.72	\$76,019.72	\$0.00
812	4-23	FLINK	\$11,813.85	6/1/2023	6/1/2025	\$1,878.79	\$7,418.12	\$7,244.04	-\$174.08
814	6-23	YODER	\$21,055.00	6/1/2023	6/1/2025		\$0.00	\$0.00	\$0.00
815	7-23	KOERNER	\$10,728.75	1/4/2024	12/31/2025		\$0.00	\$0.00	\$0.00
816	8-23	KOERNER	\$31,625.00	1/4/2024	12/31/2025		\$0.00	\$0.00	\$0.00
817	9-23	KOERNER	\$17,310.00	1/4/2024	12/31/2025		\$0.00	\$0.00	\$0.00
818	10-23	MIDWEST HW	\$51,768.30	1/4/2024	12/31/2026		\$0.00	\$0.00	\$0.00
819	11-23	TNT Timber	\$124,257.30	4/30/2024	5/1/2026		\$0.00	\$0.00	\$0.00
820	12-23	TNT Timber	\$115,113.25	4/30/2024	5/1/2026		\$0.00	\$0.00	\$0.00
821	1-24	KOERNER	\$26,270.00	4/30/2024	5/1/2026		\$0.00	\$0.00	\$0.00
823	3-24	FLINK	\$9,318.70	4/30/2024	5/1/2026	\$936.20	\$4,281.18	\$2,815.41	-\$1,465.77
824	5-24	KOERNER	\$53,280.00	4/30/2024	5/1/2026		\$0.00	\$0.00	\$0.00
755		FIREWOOD					\$0.00	\$0.00	
Payments Received This Month:						\$2,814.99	AMOUNT BILLED TO DATE	AMOUNT RCVD TO DATE	(1,639.85)

\$ RECEIVED CURRENT MONTH

2024 Budgeted Total Revenues	\$350,000
2024 Total County Forestry Revenues this month (90%)	\$2,533.49
2024 Total Township Revenues this month (10%):	\$281.50

Jobs Finished
Jobs Started
Jobs Continuing/Reactivated
Jobs Gone Inactive

2024 TOTAL NET FORESTRY REVENUE TO DATE: \$304,591.56

Committee Report

County of Wood

Report of claims for: Parks & Forestry

For the period of: October (Nov HIRC)

For the range of vouchers: 21240852 - 21240933

Voucher	Vendor Name	Nature of Claim	Doc Date	Amount	Paid
21240852	ADVANCE AUTO PARTS	Vehicle Maint.Supplies NP	08/12/2024	\$108.91	P
21240853	ADVANCE AUTO PARTS	Vehicle Maint supplies - DP	08/21/2024	\$79.86	P
21240854	ADVANCE AUTO PARTS	Vehicle Maint Supplies Forestr	08/21/2024	\$61.40	P
21240855	MENARDS-MARSHFIELD	NP Shop Supplies	09/17/2024	\$110.97	P
21240856	WEICHELT TRUCKING & EXCAVATING	Road Base CO-34	09/11/2024	\$16,916.40	P
21240857	WEICHELT TRUCKING & EXCAVATING	Road Base CO34	09/17/2024	\$14,086.65	P
21240858	ALLIANT ENERGY/ WP&L	Electric Serv NP Hawthorne Hil	09/24/2024	\$224.00	P
21240859	ALLIANT ENERGY/ WP&L	Electric Serv Suspension Bridg	09/24/2024	\$213.11	P
21240860	REESE EMBROIDERY	Embroidered Mesh Hats	09/26/2024	\$324.00	P
21240861	SHERWIN WILLIAMS	Paint - Richfield 360 vault	09/17/2024	\$140.98	P
21240862	WEICHELT TRUCKING & EXCAVATING	Road Base/Shell Rock CO34	09/26/2024	\$4,706.25	P
21240863	WEYERS EQUIPMENT INC	Hustler Mower Blades & Parts	09/17/2024	\$344.13	P
21240864	WATER WORKS & LIGHTING COMM	Electric Serv SP Shop	09/26/2024	\$73.92	P
21240865	WATER WORKS & LIGHTING COMM	Electric Serv SP Dam	09/26/2024	\$22.91	P
21240866	WATER WORKS & LIGHTING COMM	Electric Serv SP Stone&Open	09/26/2024	\$66.88	P
21240867	WATER WORKS & LIGHTING COMM	Electric Serv SP Ranger/Hos	09/26/2024	\$304.60	P
21240868	WATER WORKS & LIGHTING COMM	Electric Serv SP I2 H Panel	09/26/2024	\$33.22	P
21240869	WATER WORKS & LIGHTING COMM	Electric Serv SP Showers	09/26/2024	\$229.78	P
21240870	WATER WORKS & LIGHTING COMM	Electric Serv SP WSBP	09/26/2024	\$69.24	P
21240871	WATER WORKS & LIGHTING COMM	Electric Serv SP 1st Loop Camp	09/26/2024	\$555.45	P
21240872	WATER WORKS & LIGHTING COMM	Electric Serv SP RSBP	09/26/2024	\$56.77	P
21240873	WATER WORKS & LIGHTING COMM	Electric Serv SP 2nd Loop Camp	09/26/2024	\$382.27	P
21240874	WATER WORKS & LIGHTING COMM	Electric Serv SP 3rd Loop Camp	09/26/2024	\$436.39	P
21240875	WATER WORKS & LIGHTING COMM	Electric Serv SP Storm Shelte	09/26/2024	\$41.02	P
21240876	ALLIANT ENERGY/ WP&L	Electric Serv ATV Area CO-31	10/03/2024	\$24.49	P
21240877	ALLIANT ENERGY/ WP&L	Electric Serv Nepco Shelter	10/03/2024	\$138.69	P
21240878	ALLIANT ENERGY/ WP&L	Electric Serv Powers Bluff	10/01/2024	\$60.36	P
21240879	ALLIANT ENERGY/ WP&L	Electric Serv NP new shwr camp	10/03/2024	\$396.48	P
21240880	ALLIANT ENERGY/ WP&L	Electric Serv Np Ranger, Host	10/03/2024	\$197.77	P
21240881	ALLIANT ENERGY/ WP&L	Electric Serv Np Shelter	10/03/2024	\$79.27	P
21240882	ALLIANT ENERGY/ WP&L	Electric Serv NP Riverside Cmp	10/03/2024	\$213.80	P
21240883	ALLIANT ENERGY/ WP&L	Electric Serv NP Shop	10/03/2024	\$105.07	P
21240884	ALLIANT ENERGY/ WP&L	Electric Serv NP lower camp	10/03/2024	\$114.00	P
21240885	AMAZON CAPITAL SERVICES	outdoor light SP	09/26/2024	\$89.88	P
21240886	AMAZON CAPITAL SERVICES	Signs - Powers Bluff	10/01/2024	\$60.80	P
21240887	AMAZON CAPITAL SERVICES	Heating System for Pipes PB	10/07/2024	\$75.99	P
21240888	BEAR GRAPHICS INC	Wall Calendars (12)	09/30/2024	\$71.44	P
21240889	BEAVER CREEK NURSERY & LANDSCAPING LLC	Lawn Mowing September NP	10/03/2024	\$2,016.00	P
21240890	BUDS CORNER MART	Gas for Vehicles & Equip SP	09/30/2024	\$757.33	P

Parks & Forestry - October (Nov HIRC)

21240852 - 21240933

21240891	FRIENDS AND NEIGHBORS COUNTRY STORE INC	Fuel #751, 560	09/30/2024	\$325.40	P
21240892	HANES GEO COMPONENTS	Turbidity Barrier CO-65	09/27/2024	\$9,850.00	P
21240893	HOME CITY ICE COMPANY THE	Ice For DP Campground	09/06/2024	\$269.31	P
21240894	OAKDALE ELECTRIC CO	Electric Serv DP Beach House	10/02/2024	\$41.45	P
21240895	OAKDALE ELECTRIC CO	Electric Serv DP ATV Sites	10/02/2024	\$110.22	P
21240896	OAKDALE ELECTRIC CO	Electric Serv DP Dam	10/02/2024	\$62.90	P
21240897	OAKDALE ELECTRIC CO	Electric Serv DP Loop 3 Vault	10/02/2024	\$58.42	P
21240898	OAKDALE ELECTRIC CO	Electric Serv DP Shelter	10/02/2024	\$52.90	P
21240899	OAKDALE ELECTRIC CO	Electric Serv DP Loop 2 Shower	10/02/2024	\$372.11	P
21240900	OAKDALE ELECTRIC CO	Electric Serv DP Smitty Storag	10/02/2024	\$49.21	P
21240901	OAKDALE ELECTRIC CO	Electric Serv SP Group Site	10/02/2024	\$128.02	P
21240902	OAKDALE ELECTRIC CO	Electric Serv DP Host, FHU	10/02/2024	\$343.17	P
21240903	OAKDALE ELECTRIC CO	Electric Serv for DP Loop 1	10/02/2024	\$445.63	P
21240904	OAKDALE ELECTRIC CO	Electric Serv DP Cabin, Wood	10/02/2024	\$110.79	P
21240905	OAKDALE ELECTRIC CO	Electric Serv DP Loop 3	10/02/2024	\$266.44	P
21240906	OAKDALE ELECTRIC CO	Electric Serv DP Shop	10/02/2024	\$196.83	P
21240907	PITTSVILLE FARM & HOME CENTER	Grass Seed DP	09/18/2024	\$64.43	P
21240908	PITTSVILLE FARM & HOME CENTER	Liquid nails - Bench Repari -	09/23/2024	\$11.99	P
21240909	QUALITY DOOR & HARDWARE	Cores for doors CO-53	09/27/2024	\$529.00	P
21240910	WASTE MANAGEMENT	Monthly Garbage Service Fees	10/03/2024	\$1,267.61	P
21240911	WE ENERGIES	Gas Service for SP Shop	10/03/2024	\$10.89	P
21240912	WE ENERGIES	Gas Service SP Cabin Shower	10/02/2024	\$19.57	P
21240913	WE ENERGIES	Natural Gas for Storm Shelter	10/02/2024	\$29.59	P
21240914	AMAZON CAPITAL SERVICES	Speed Limit Signs	10/03/2024	\$104.37	P
21240915	BOHN TRUCKING & EXCAVATING INC	Black Dirt Storm Shelter CO53	10/03/2024	\$1,074.45	P
21240916	ADVANCE AUTO PARTS	598 oil Change - Forestry	09/05/2024	\$75.19	P
21240917	ADVANCE AUTO PARTS	hydarlic - hustler SP	09/09/2024	\$6.17	P
21240918	CINTAS CORPORATION	Camp Rangers Uniform Cleaning	09/06/2024	\$67.55	P
21240919	CINTAS CORPORATION	Camp Ranger Uniform Cleaning	09/13/2024	\$67.55	P
21240920	CINTAS CORPORATION	Camp Rangers Uniform Cleaning	09/20/2024	\$67.55	P
21240921	CINTAS CORPORATION	Camp Rangers Uniform Cleaning	09/27/2024	\$64.88	P
21240922	GRIFFITH STATE NURSERY	nursery stock - WC Forest	10/07/2024	\$9,829.10	P
21240923	INSIGHT FS	Unleaded Gas NP	09/30/2024	\$809.06	P
21240924	INSIGHT FS	Diesel NP	09/30/2024	\$665.12	P
21240925	INSIGHT FS	unapplied credit	09/30/2024	(\$659.06)	P
21240926	LAKESIDE OASIS LLC	Gas & Diesel - DP & Forestry	10/01/2024	\$1,223.54	P
21240927	PROVISION PARTNERS	fuel 764	09/19/2024	\$50.31	P
21240928	PROVISION PARTNERS	fuel 598	09/20/2024	\$155.59	P
21240929	PROVISION PARTNERS	fuel for weedies	09/26/2024	\$16.27	P
21240930	RICHARD CANDACE	refund shelter reservation	10/10/2024	\$285.00	P
21240931	SOLARUS	internet for storm shelter	10/16/2024	\$79.99	P
21240932	TREE OF LIFE FORESTRY SERVICES	Herbicide application rf360	10/08/2024	\$4,950.00	P
21240933	WPRA	2025 Annual conf - Chad	10/15/2024	\$300.00	P

Grand Total:**\$77,838.99**Signatures

Committee Chair:

Committee Member:

Committee Member:

Committee Member:

Committee Member:

Committee Member:

Committee Member:

Committee Member:

Committee Member:
