



**Wood County**  
**Health Department**

**2020 Report to the  
Community**

This annual report highlights some of the programs and services which meet the requirements to be a nationally accredited health department. It is not an all-inclusive list of the programs and services provided by the Wood County Health Department.



# TABLE OF CONTENTS

Letter from the Director .....	4
Strategy .....	5
Programs & Services .....	6-10
COVID-19 Emergency Response .....	11-12
Workforce .....	13-14
Demographics .....	15
Finance .....	16

Dear County Board members, Health and Human Services Committee members, Colleagues, Partners, and Residents:



I am pleased to present this 2020 annual report of the Wood County Health Department. 2020 was one of the most challenging years in the history of the Health Department. The unprecedented obstacles posed by the COVID-19 pandemic had us operating in emergency mode for most of the year, and impacted every program area. We grieve for those who lost loved ones over the course of the last year. With the development of safe and effective vaccines, there is an end to the pandemic in sight.

Even as we have focused on combating COVID-19, we made our best efforts to move ahead on other priorities. We also maintained our national public health accreditation status, which makes us all extremely proud.

While battling COVID-19 will not only continue to be a focus for months to come, it will also have a lasting impact on how we perform much of our work. We hope to move into recovery mode later in 2021 and reassess our priorities to support the public's health moving forward. The dedication and resiliency of our team has been a guiding light and we have a strong foundation with remarkable community partnerships and we look forward to successes in the years to come.

Appreciation is extended to the Health and Human Services Committee, the healthcare community, schools, and our valued community partners that collaborated with us throughout 2020. This appreciation is also extended to the Wood County Board of Supervisors.

To the Wood County Health Department team – there are no words to express my gratitude for your sacrifices throughout 2020. I am in awe of your dedication, patience and perseverance in the face of an overwhelming amount of anger from so many people you were working day and night to help. You spent time away from your families through many holidays, birthdays, anniversaries and other important days when you should have been able to be by their side. You came to work. You helped others through difficult times and you saved lives. I will be forever proud of the way you stepped up to serve this incredible community in a responsible and meaningful way, and I am thankful for the opportunity to lead this great Health Department.

Our team members are committed to improving the quality of life we enjoy in Wood County and we welcome your feedback on how we can better serve you. Visit our website to find out more about what we do: <http://www.co.wood.wi.us/Departments/Health/> and send me an e-mail at [skunferman@co.wood.wi.us](mailto:skunferman@co.wood.wi.us) if you have any questions or suggestions. I look forward to hearing from you!

*Sincerely,*

A handwritten signature in black ink that reads "Susan Kunferman". The signature is written in a cursive, flowing style.

*Susan Kunferman, RN, MSN, CPM  
Director/Health Officer*

## STRATEGY

### OUR MISSION

Maximizing quality of life across the lifespan

### OUR VISION

Wood County Health Department will be an innovative and valued resource driven by an interdisciplinary team of passionate professionals. We will identify the conditions and actions needed to assure fair and just opportunities for present and future generations, leading the way to **a healthier society**.

#### \* Core Values \*

**Accountable**

**Credible**

**Equitable**

**Ethical**

**Collaborative**

The Health Department maintained Public Health accreditation status in 2020; demonstrating a commitment to transparency, accountability, and a culture of quality improvement in light of the overwhelming pandemic response needs.

The Health Department's Strategic Plan and Community Health Improvement Plan provided a basis for our work. Both plans can be found on the department's website:

<https://www.co.wood.wi.us/Departments/Health/>

Performance management measures are strategies implemented to track the efficacy of programs within the Wood County Health Department. These measures hold the Health Department accountable to delivering the best services and initiatives we can. Traditionally, each program area within the Health Department annually reviews and makes revisions to their performance measures to ensure they continue to be relevant to the evolving work of their respective program area. The review of our measures helps identify in what areas we are doing well and where improvements can be made. When areas of improvement are identified, staff will brainstorm ways they can make improvements to that specific body of work. Once staff have identified how to best address the gaps, they draft a storyboard to outline what the gap is, what methods they plan to do to address the gap, how they plan to track change, and ultimately, write their conclusions on the effectiveness of the changes made.

Unfortunately, due to the reprioritization of Wood County Health Department Staff capacity being shifted from their traditional roles to new roles relating to the COVID-19 response, the annual review of performance management measures and quality improvement projects did not occur for 2020. Although, we are seeking to return to our regular review of these measures and projects in 2021 once staff capacity can be allocated back to their traditional roles.

## PROGRAMS & SERVICES

Due to emergency response associated with the COVID-19 pandemic, the following programs and services were limited in scope throughout 2020; yet remain a priority and are expected to return to normal as soon as possible.

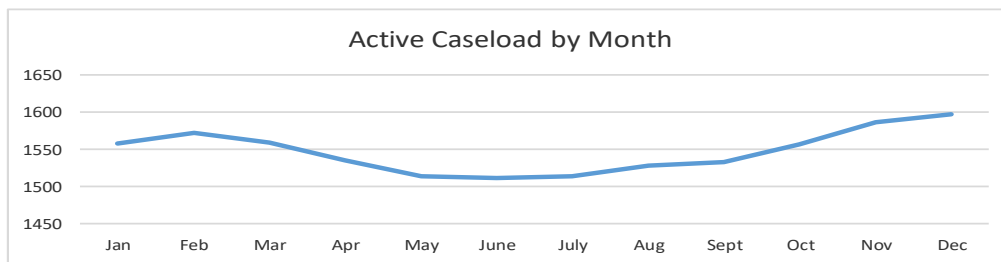
### FAMILY HEALTH / INJURY PREVENTION

- Wood County provides Prenatal Care Coordination (PNCC) services to pregnant women who are identified as at-risk for poor birth outcomes. In addition to PNCC, Public Health Nurses provide Maternal Child Health (MCH) outreach, phone support, and home visiting services to families who need health education, resources, lactation services, and/or support after having a baby. Goals of the program include: increase mental health screening and service access, increase access to appropriate preventative medical services, increase adequate and safe housing, increase food stability, increase breastfeeding rates, and decrease prenatal alcohol, drug, and tobacco exposure.
- The Wood County Health Department offers a comprehensive childhood immunization program. For those meeting eligibility requirements, vaccines recommended for infants through age 18 are available by appointment in both the Wisconsin Rapids and Marshfield offices. Adult vaccines are also available for those who meet eligibility.
- The Wood County Health Department is proactive in lead poisoning prevention. Children with blood lead levels of 5 mcg/dL or higher are offered nursing case management services and environmental health intervention. One child/family was offered, and accepted, case management services for lead poisoning during 2020.
- *Caring Hands* is a training program designed to create an understanding of child development, social needs, health, safety, and resources. The vision is that all caregivers will be inclusive and adaptable to the needs of all children in their care.
- The Wood County Child Death Review team is a multidisciplinary team of professionals that reviews all intentional and unintentional deaths occurring in Wood County of people age 25 years and younger. The deaths are reviewed from a prevention standpoint and the team makes recommendations for various policy changes, environmental changes, and educational initiatives to prevent future similar deaths. In 2020, only one meeting could be held with two cases reviewed.
- The Wood County Health Department offers individual support by providing breastfeeding appointments, lactation phone calls, and breastfeeding peer counseling.
- Outreach is provided to the Plain community on a monthly basis and as needed to promote healthy birth outcomes and to provide education and resources on pregnancy, breastfeeding, immunizations, safety, and overall family health. Additional services are offered such as well water testing to ensure safe drinking water and fluoride varnish to children to increase preventative oral health.

- The Health Department uses an effective mix of education, positive reinforcement and oversight to keep tobacco products out of the hands of youth.
- *Safe Kids Wood County* is part of a global network of organizations whose purpose is to prevent accidental childhood injury, a leading killer of children 17 and under. Their mission is to reduce unintentional injuries for children in this age group by empowering families and communities through educational initiatives. The coalition was organized in 2006, is led by Marshfield Medical Center, and has representatives from fourteen different agencies.

### WOMEN, INFANTS, AND CHILDREN (WIC)

- WIC is a federally funded program, which provides eligible participants with nutrition education, breastfeeding support, healthy foods, and healthcare referrals. Persons served include pregnant and breastfeeding women, infants, and children up to age five.
- During 2020 the Wood County Health Department and Wood County WIC continued to provide oversight and management of the Wisconsin Rapids Downtown Farmers Market, with social distancing requirements. The market accepted cash, credit/debit, Foodshare, WIC vouchers, and Fruit and Veggie prescriptions.
- Throughout most of 2020, WIC participants met virtually with WIC dietitians. WIC active caseload averaged 1,547 in 2020 with 60 participants enrolled in the Fit Families program.



### COMMUNICABLE DISEASE

- The Wood County Health Department executes the requirements described in Chapter 252 Wisconsin Statutes regarding the reporting, surveillance, and control of communicable diseases. These responsibilities are accomplished through the cooperative efforts of hospital infection control personnel, healthcare providers, local health departments, and laboratories.

**Trending Data - Rates of Selected Diseases per 100,000 Population**

Disease	Wood County			Wisconsin		
	2020	2019	2018	2020	2019	2018
Lyme Disease*	160	222.89	193.25	73	109.63	90.62
Pertussis	3	8.1	29.52	2	14.04	6.8
Campylobacteriosis	24	17.56	21.47	19	15.6	23.41
Cryptosporidiosis	14	20.26	12.08	7	12.5	10.68
Giardiasis	12	13.5	28.18	7	10.84	11.63
Salmonellosis	9	20.26	20.13	10	14.14	16.4
Chlamydia	266	321.5	269.75	437	504.85	489.11
Hepatitis C	26	16.21	28.18	33	36.2	37.74

\* Includes Confirmed, Probable, and Suspect Cases

**PUBLIC HEALTH EMERGENCY PREPAREDNESS**

- Each year, capabilities are prioritized and work is done to fulfill the emergency preparedness requirements. Emergency preparedness planning in 2020 was sidetracked with actual emergency response required by the COVID-19 pandemic.

**ENVIRONMENTAL HEALTH**

- Registered Sanitarians enforce codes, license and inspect annually restaurants, pools, recreational/educational camps, hotels/motels, manufactured home communities, tourist lodging facilities, campgrounds, body art establishments, and retail food stores.

County	School Kitchens	Temporary Events	Number of Licensed Establishments									
			Restaurant	Retail Food	Lodging	Pools	Water Attractions	Mobile Home Parks	Campgrounds	Rec/Ed Camps	Body Art	State Temp
WOOD	37	37	228	151	35	27	9	24	10	3	9	12
ADAMS	8	8	87	28	189	21	16	18	24	0	1	5
JUNEAU	15	5	118	59	91	48	5	20	40	2	1	6

- In addition, a percentage of vending machines with perishable food or cup soda and coffee, and temporary food establishments, are licensed and/or inspected annually. Under an agreement with the Department of Ag, Trade, and Consumer Protection and Department of Public Instruction, school kitchens are inspected twice yearly.
- Our in-house water laboratory does analysis for bacteria and nitrate in drinking water, and for bacteria counts in recreational water. A total of 184 private water samples were analyzed at the Wood County Water Laboratory in 2020. In addition to these homeowner samples, 880 Transient Non-Community water systems samples from Adams, Juneau and Wood Counties were analyzed in 2020 (wells of businesses that serve the public are inspected for structural soundness and routes of potential contamination). Beach samples are collected throughout the summer, 42 Wood County beach samples were analyzed at the Wood County Water Laboratory in 2020. Adams County also submitted 39 samples for analysis in 2020. Environmental Health Staff and the Environmental Health Program Manager conduct the water analysis and complete data entry.
- The Wood County Public Health Ordinance is enforced by the Wood County Health Officer and Environmental Health staff. Environmental Health Specialists regularly respond to citizen and business complaints regarding violations of the Public Health Ordinance. When a public health hazard complaint is substantiated, Environmental Health staff work with individuals involved to ensure safe elimination of the hazard. If the hazard is not voluntarily abated, legal action can be initiated.



# Complaints	Wood County	Adams County	Juneau County
2018	217	89	66
2019	212	94	59
2020	172	57	51



- Furthermore, Environmental Health investigates indoor and outdoor air quality issues, ensures safe beach and drinking water quality, and provides radon education and rabies control; and responds to environmental concerns affecting residents or visitors, providing guidance on health effects and illness prevention.
- The pharmaceutical collection serves as a means of protecting groundwater and surface water from contamination from improper drug disposal. Unsafe drug disposal is also harmful to wildlife and damaging to Public Health. In recent years, the misuse and abuse of pharmaceuticals has increased; one of the most common sources of illicit pharmaceuticals is the home medicine cabinet. In 2020, ongoing collection sites were available at the Wood County Sheriff's Department, as well as the Port Edwards, Pittsville, Nekoosa, Wisconsin Rapids, Grand Rapids, and Marshfield Police Departments. The law enforcement collection sites offer opportunities for safe disposal of medications by all Wood County residents.

### **HEALTH PROMOTION / COMMUNICATION**

- Healthy People Wood County (HPWC) is a partnership of residents, hospitals, nonprofits, businesses, public health officials, and schools that is aligning efforts to fight complex health problems together.
- Community teams facilitate health priorities through the Healthy People Wood County Community Health Improvement Plan, which includes priorities of: health in all policies, housing, social and community development, incarceration, behavioral health, substance use prevention, education, improving the food system and built environment.
- Within the priorities, a few highlighted progress points for the year are included but are not limited to:
  - 2020 Wood County Community Health Assessment published in January
  - 2020-2022 Community Health Improvement Plan (CHIP) published in March; includes health in all policies, housing, social and community development, incarceration, and education in addition to the previous CHIP health priorities
  - 2020 Healthy People Wood County summit held in March, bringing together organizations to learn about health equity
  - Drug Free Communities Grant written, submitted and awarded
  - Narcan distribution program in place through a partnership with Wisconsin Department of Health Services
  - Jail Work Group efforts continued with planning to reduce incarceration, recidivism, and revocation rates; improve access to mental health and substance use disorder treatment services for justice-involved populations; eliminate unfair burdens incarceration imposes on marginalized groups
  - Wisconsin WINS tobacco checks done Jan-June 2020
  - Farmers market successfully managed; EBT, WIC vouchers, Senior Vouchers, Rx vouchers, debit and credit were all accepted at the market
  - Research and planning for a new bike share program after the previous provider closed due to COVID; Koloni, Inc. is the new provider and the program will relaunched in 2021
  - Wisconsin Rapids municipal alcohol ordinances and policies inventoried and assessed
  - Funding secured to offer health equity training for internal Wood County Health Department staff

## HEALTH EQUITY

- Across Wood County there are significant differences in health outcomes from one zip code to the next and among racial, ethnic, and socioeconomic groups. Health inequities emerge when some individuals gain more than others from consistently better access to opportunities and resources over the course of their lives. Increasing opportunities for everyone can reduce gaps in health and make our entire community healthier.
- An internal Health Equity Team is in place to tackle these inequities and create solutions to advance health equity in Wood County. The vision of the Health Equity Team is Wood County residents' health outcomes will not be determined by race, ethnicity, class, gender, income, education, geography, or any other group status. An action plan was created based on the vision and goals and is led and implemented by the Health Equity Team.

### Goals of the Health Equity Team

1. Transform organizational and workforce capacity by building health equity into Wood County Health Department's agency operations including programs, policies, practices, and operations.
2. Change the conversation about what creates health within public health, across government, and in communities.

Health equity means that everyone has a fair and just opportunity to be as healthy as possible regardless of race, income, gender, location, or another group status. Achieving health equity requires working together as a community to eliminate poverty, racism, discrimination, and powerlessness while also improving access to and availability of social, economic, and environmental opportunities.

## HEALTHY SMILES FOR WOOD COUNTY

- Healthy Smiles for Wood County is a school-based, school-linked dental education, screening, sealant, and fluoride varnish program. It is a partnership between the Wood County Health Department, schools in Wood County, Head Start Centers, the dental community, and local volunteers. The primary focus is prevention of dental caries through outreach, education, sealant and varnish placement, systems change, reduction of oral health disparities and referrals to establish a dental home for children at an earlier age.
- The Healthy Smiles for Wood County program has continued to grow and evolve since its inception in 1999. Amidst the challenge with school closures in 2020, Healthy Smiles for Wood County accomplished the following during the 2019/2020 school year:
  - Provided 1,713 children with dental health education
  - Screened 1,715 children
  - Placed 1,968 sealants on 605 children
  - Placed 2,540 fluoride varnish treatments on 1,831 children
  - Referred 384 children with unmet dental needs to area dental clinics
- Healthy Smiles for Wood County is the only population-based sealant and fluoride varnish program within the county. Our sealant program operates at all Wood County Public schools and three larger private schools. Our fluoride varnish program operates at all Wood County Head Start centers.

## COVID-19 PANDEMIC

On March 12<sup>th</sup>, 2020 Governor Tony Evers declared our first statewide Public Health Emergency for COVID-19. Two days later on March 14<sup>th</sup> Wood County received our first confirmed COVID-19 case. By the end of December 2020, Wood County had 5,612 confirmed cases of COVID-19 and 44 mortalities among the confirmed cases. Nearly 40 limited term employees (LTEs) were hired to work on disease investigation and contact tracing.

**\$ Grant Award**

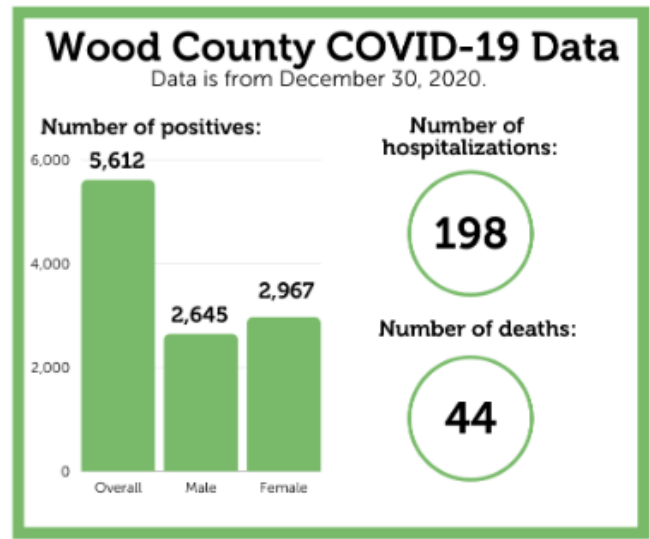
WCHD was awarded **\$1,084,362** for COVID-19 response.

This includes, but is not limited to:

- Disease investigation
- Contact tracing
- Testing
- Personal protective equipment and other supplies
- Community needs

**🕒 Staff Time**

WCHD spent **36,903** hours on COVID-19 response!



WCHD worked to provide multiple COVID-19 testing options in Wood County free of charge. WCHD worked with the Wisconsin National Guard to host weekly COVID-19 testing in Wood County for Wisconsin Residents. WCHD also held COVID-19 testing in Wisconsin Rapids and Marshfield for close contacts of confirmed COVID-19 cases.

The Community Needs Task Force (CNTF) formed in March 2020 as an internal effort to address unmet needs in Wood County due to the COVID-19 pandemic. In order to assess community needs related to the pandemic, a questionnaire was developed and sent out in an electronic survey format. Additional information was collected through virtual meetings, phone conversations, personal experiences, and research on populations within the community who would potentially have the most negative health outcomes due to the pandemic. Several needs were identified by contact tracers and disease investigators through phone interviews with individuals who were both directly and indirectly affected by COVID-19. This was the most extensive method of identifying needs, as the virus has affected all populations within the community. Additional needs arose as new safety guidelines and requirements were put in place, and the number of positive cases increased.

CNTF received a donation from the Salvation Army to purchase materials to make homemade cloth facemasks. 57 mask making heroes sewed and donated over 7,000 cloth face masks.

Additionally, CNTF received funding through Marshfield Clinic Health System (MCHS) and Security Health Plan (SHP) for COVID-19 Emergency Response. CNTF was intentional about using this funding to increase equity and focused efforts around populations who are at highest risk for negative health outcomes due to COVID-19. Efforts included:

- Support utilities/rent for A Better Way Clubhouse and River Cities Clubhouse, organizations who support individuals living with mental health challenges
- Install permanent soap/shampoo dispensers in the Wood County Jail
- Install hand sanitizer stations in public spaces of the Wood County Courthouse
- Purchase hand sanitizer and disinfecting wipes for non-profit agencies who serve high-risk populations (such as Three Bridges Recovery, Oxford Houses, The Hannah Center)
- Purchase Pulse Oximeters for individuals who have contracted COVID-19 and have underlying health conditions or are over a certain age with health concerns
- Purchase materials for wellness kits to be distributed by community partners to clients exhibiting signs of depression or suicidal ideation
- Purchase materials for making homemade cloth facemasks (distributed to community volunteers)
- Placing an ad in the Spanish newspaper, *Noticias*, covering Central Wisconsin that included safety tips and recommendations for influenza and COVID-19 vaccinations once available

In addition to connecting residents to community resources, CNTF focused on providing education and increasing awareness of COVID-19 safety measures. In May 2020, CNTF launched the Wood County COVID-19 Newsletter. The weekly newsletter is sent by email and includes resources, tips, information, news stories, and an in-depth article on various COVID-19 related topics written by WCHD staff. Thirty-four editions of the newsletter were published in 2020.

In June 2020, WCHD and Wood County Land Information Office created a COVID-19 GIS map and statistics portal. The portal provides the public with comprehensive COVID-19 data including cases by sex, age, ethnicity, race, municipality, school district area, and hospitalizations, deaths, and tests by day.

On July 30, 2020 Governor Tony Evers declared a Public Health Emergency and issued a statewide Emergency Order requiring individuals\* over age 5 to wear a face covering when indoors and not in a private residence. Wood County Health Department introduced the *Wear A Mask* campaign to remind Wood County residents, visitors, and travelers to do their part in reducing the spread of COVID-19. Various means of media were used to promote a positive and encouraging message for compliance of the state order. Messaging centered on sharing science and research-based facts, dispelling myths, and promoting normalization of mask wearing with the ultimate goal of slowing the spread of COVID-19.

## COVID-19 Timeline



# WORKFORCE

## Wood County Health Department



Yrs of  
Service

### MANAGEMENT TEAM

- 15.5 Susan Kunferman
  - Director/Health Officer
- 30.0 Nancy Eggleston
  - Environmental Health Supervisor
- 19.5 Kathy Alft
  - Public Health Manager
- 12.5 Kristie Rauter Egge
  - Supervisor of Strategic Initiatives
- 13.5 Erica Sherman
  - Public Health Nurse Supervisor

Yrs of  
Service

### HEALTH PROMOTION/COMMUNICATION

- 3.5 David Strong Epidemiologist
- 3.5 Ashley Normington Public Health Strategist
- 3.0 Julie Cutright Community Health Planner
- <1 yr Kayleigh Mengel PH Policy & Communications Coordinator
- 1.0 Hannah Wendels Health Educator
- 2.0 Erin Fandre Dental Hygienist
- 3.0 Reyne Reffner Program Coordinator

### COMMUNICABLE DISEASE

- 6.0 Danielle Hiller Public Health Nurse
- 14.5 Alecia Pluess Public Health Nurse

### ENVIRONMENTAL HEALTH (EH)

- 15.0 Kate Carlson Registered Sanitarian
- 3.5 Logan Manthe Registered Sanitarian
- 3.0 Tim Wuebben Environmental Health Assistant
- 3.0 Mariah Heiman Environmental Health Assistant
- 1.0 Ben Jeffrey Environmental Health Assistant
- 1.0 Dave Joosten Environmental Health Assistant

Yrs of  
Service

### FAMILY HEALTH / INJURY PREVENTION

- 4.0 Melony Johnson Public Health Nurse
- <1 yr Pat Lor Public Health Nurse
- n/a Vacant Public Health Nurse

### OPERATIONAL SUPPORT

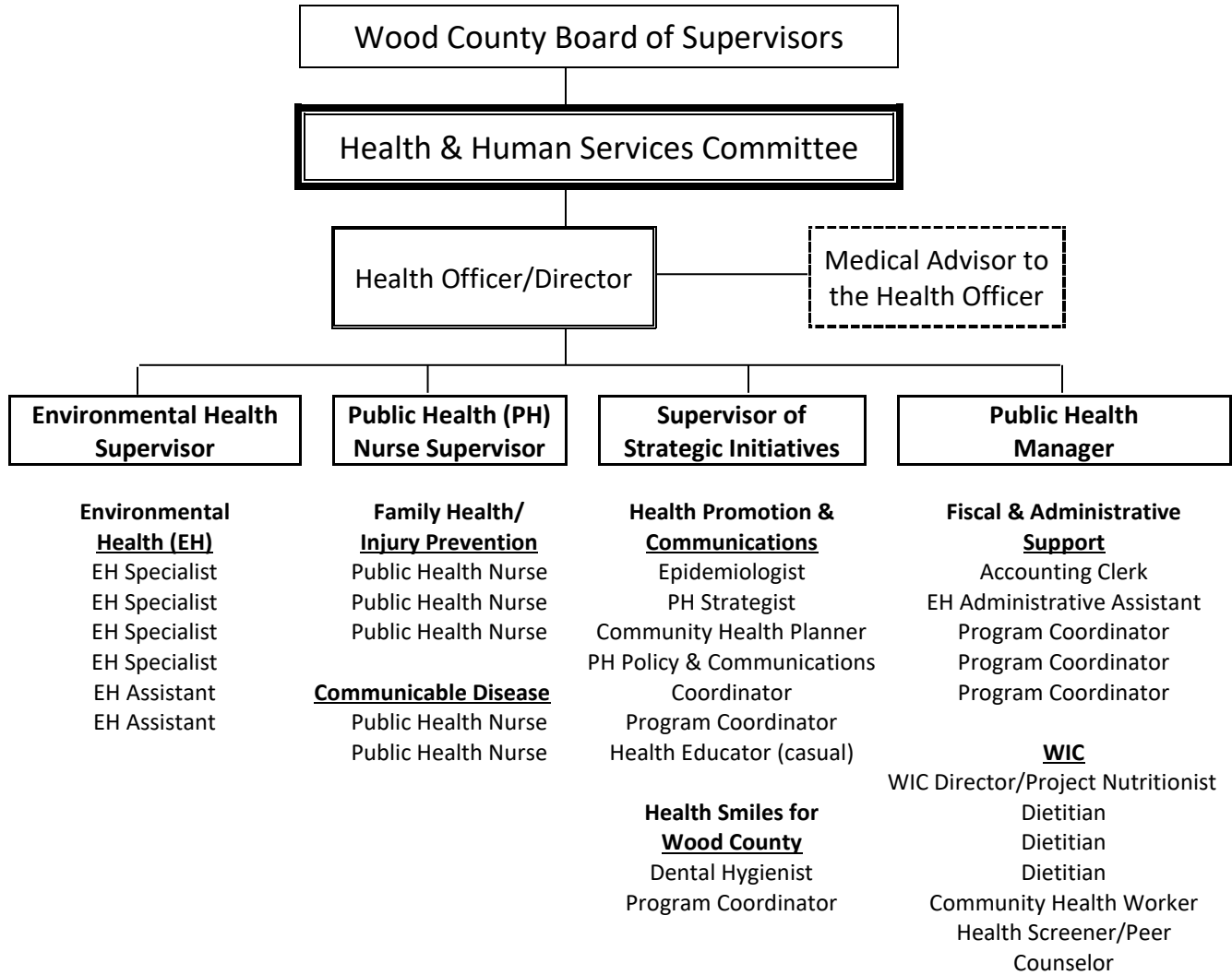
- 3.5 Dawn Pearson Accounting Clerk
- 4.5 Jessi Jacobitz Program Coordinator
- 7.0 Val Elliott EH Administrative Assistant
- 6.5 Ashley Arendt Program Coordinator
- 24.5 Mai Thao Program Coordinator
- <1 yr Yesenia Meza Program Coordinator

### WIC

- 3.0 Camen Haessig WIC Director/Project Nutritionist
- 4.5 Jessica Hutchinson Nutritionist/Health Educator
- 6.5 Tiffany Halama Nutritionist/Health Educator
- <1 yr Wendy Barth Nutritionist/Health Educator
- 6.0 Sarah Krubsack Community Health Worker
- <1 yr Whitney Armour Health Screener/Peer Counselor

The Health and Human Services Committee (HHSC) is comprised of five County Board supervisors and four citizen members. They provide oversight to the Wood County Health Department. The Committee assesses public health needs and advocates for the provision of reasonable and necessary public health services. Along with the Health Officer, they develop policy and provide leadership that foster local involvement and commitment.

**WOOD COUNTY HEALTH DEPARTMENT ORGANIZATIONAL CHART**



## DEMOGRAPHICS

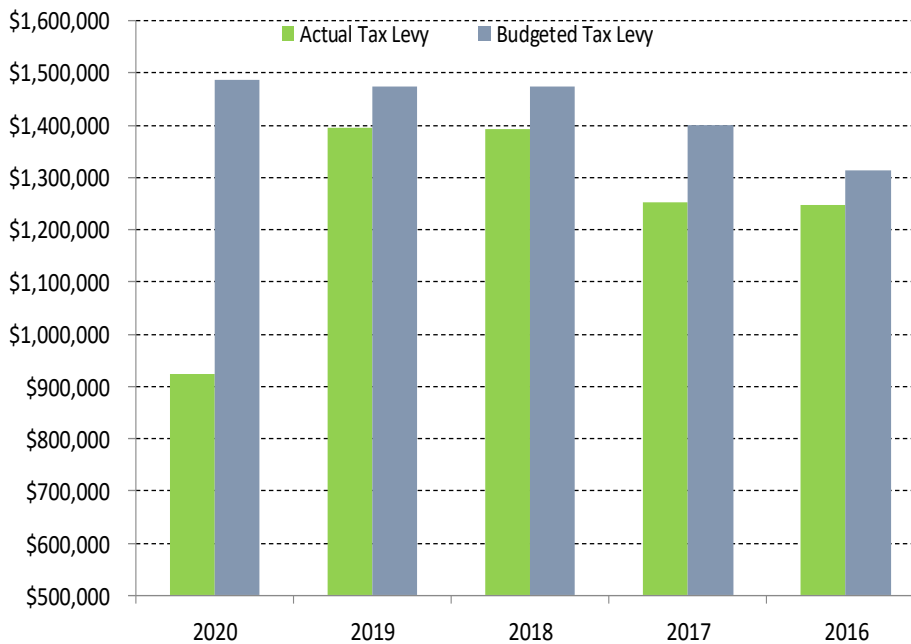
	Wood County		WI	
<b>Population</b>				
Population, 2019 estimates	72,999		5,822,434	
Population, percent change, April 1, 2010 to July 1, 2019	-2.34%		2.38%	
Population 2010 estimates	74,749		5,687,282	
<b>Age and Sex</b>				
Persons under 5 years old	5.70%	4,161	5.70%	331,879
Persons under 18 years old	21.60%	15,768	21.80%	1,269,291
Persons 65 years old and over	21.10%	15,403	17.50%	1,018,926
Female persons	50.80%	37,083	50.20%	2,922,862
<b>Race and Hispanic Origin</b>				
White persons	94.70%	69,130	87.00%	5,065,518
Black persons	1.00%	730	6.70%	390,103
American Indian and Alaska Native persons	1.00%	730	1.20%	69,869
Asian persons	2.00%	1,460	3.00%	174,673
Persons reporting two or more races	1.30%	949	2.00%	116,449
Persons of Hispanic or Latino origin	3.20%	2,336	7.10%	413,393
White persons not Hispanic	92.00%	67,159	80.90%	4,710,349
<b>Population Characteristics</b>				
Veterans (2015-2019)	7.21%	5,264	5.69%	331,340
<b>Education</b>				
High school graduates, percent of persons age 25+ (2015-2019)	92.70%		92.20%	
Bachelor's degree or higher, percent of persons age 25+ (2015-2019)	21.60%		30%	
<b>Computer &amp; Internet Use</b>				
Households with a computer (2015-2019)	86.60%		89.40%	
Households with a broadband internet subscription (2015-2019)	81.20%		82.50%	
<b>Income &amp; Poverty</b>				
Median household income (2015-2019)	\$54,913		\$61,747	
Per capita income in past 12 months (2015-2019)	\$31,425		\$33,375	
Persons in poverty	10.70%		10.40%	
<b>Health</b>				
Persons with a disability, age under 65 years (2015-2019)	10.20%		8.00%	
Persons without health insurance, under age 65 years	6.10%		6.80%	
<b>Geography</b>				
Land area, , 2010 (square miles)	793.12		54,157.80	
Persons per square mile, 2010	94.2		105	

[www.census.gov/quickfacts](http://www.census.gov/quickfacts)

## FINANCE

The Wood County Health Department continues to advocate for public health funding, explore opportunities for new funding sources, and devote valuable resources to retaining current funding. We adapt programs and services as funding sources change and as a result the Health Department has returned over \$937,000 to contingencies the past five years.

<b>REVENUES</b>	<u><b>2020</b></u>	<u><b>2019</b></u>
Intergovernmental Revenues (Federal/State Grants)	\$ <b>1,611,943</b>	\$ 539,396
Licenses and Permits (Environmental Health)	\$ <b>411,194</b>	\$ 440,848
Public Charges for Services (includes MA revenue)	\$ <b>38,870</b>	\$ 97,623
Intergovernmental Charges (DNR, Adams/Juneau County MOU)	\$ <b>129,674</b>	\$ 139,052
Other Grant Funds (includes Non-Lapsing funds grant budgets)	\$ <b>78,630</b>	\$ 23,662
 <b>EXPENDITURES</b>		
Public Health	\$ <b>2,326,409</b>	\$ 1,753,002
Women, Infants, & Children *	\$ <b>376,999</b>	\$ 379,237
Consolidated Contract *	\$ <b>71,029</b>	\$ 77,491
Healthy Smiles for Wood County *	\$ <b>65,744</b>	\$ 104,883
Adams/Juneau EH Services *	\$ <b>352,990</b>	\$ 322,170
* Non-tax levy programs ... 100% grant-funded programs		
<b>TAX LEVY</b>	<b>\$ 922,861</b>	\$ 1,396,201



*The Health Department used 62% of budgeted tax levy in 2020, returning \$564,939 to contingency. This was primarily the result of unanticipated grant funding received for COVID response.*



**Annual Report:**

For additional copies of this report call, 715-421-8911, or visit our website at [www.co.wood.wi.us](http://www.co.wood.wi.us)

**Information Sources:** National Association of County and City Health Officials, Centers of Disease Control and Prevention, Wisconsin Department of Health Services, Public Health Profiles, Wood County Health Department.



**Public Health**  
Prevent. Promote. Protect.